

Language
Access for
Law
Enforcement



Created and
Presented by the
San Francisco Police
Department

Who

ARE



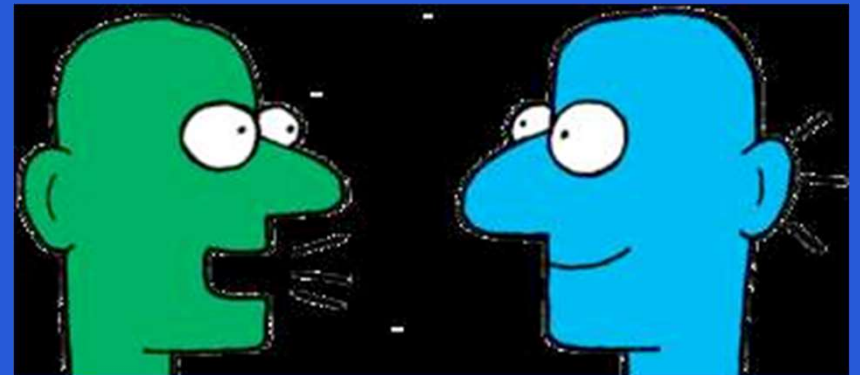
we?



Course and Distance Learning Expectations



Course Goal





PRE-Test





Learning Activity #1



Officer
Paramjit
Kaur
#1354

Language Access
Liaison (LEP)
Deaf and Hard of
Hearing Liaison



Video

Legal Mandates

- Title VI



- Presidential Executive Order 13166



- DOJ Funding and Expectations



What is the **Liability**?



Key Terms

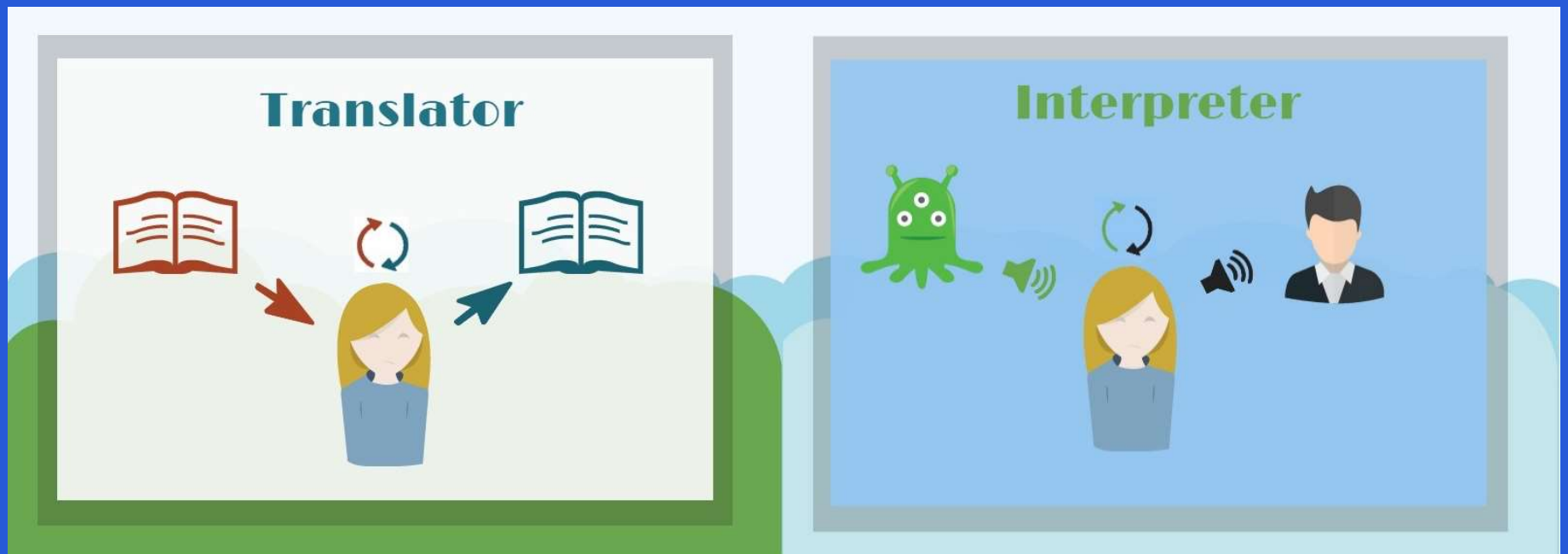
Interpret vs. Translate

Key Term - Interpret

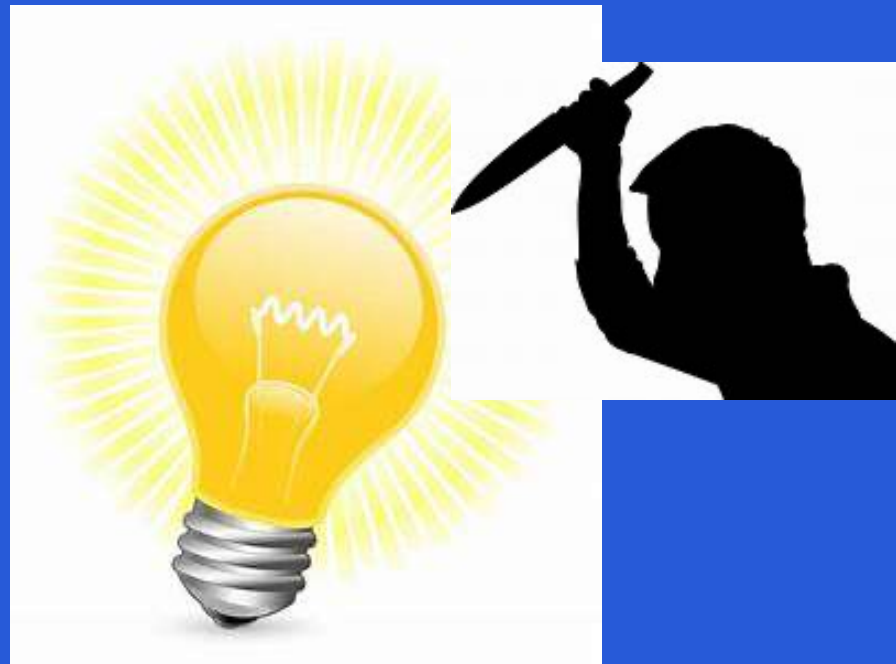
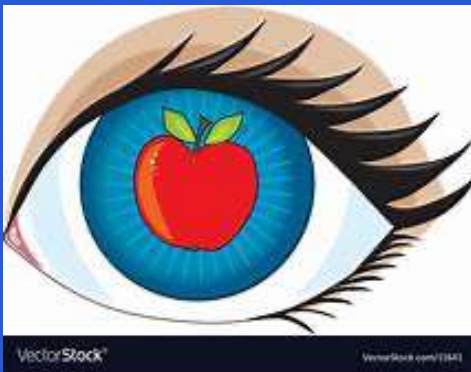
Spoken word,
to spoken word



Translate vs. Interpret



Hedges/Colloquialisms



Cultural Aversions



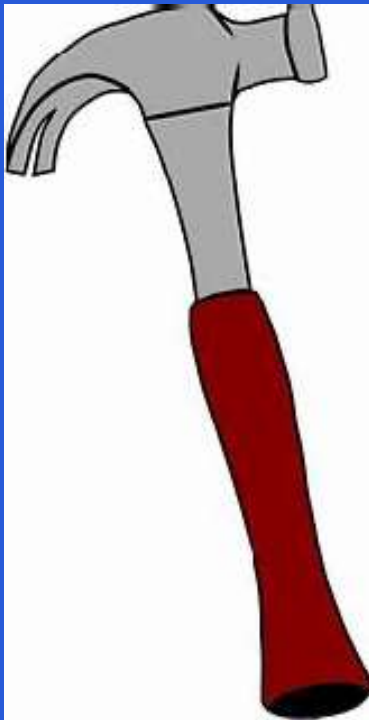
“It sure is slow
today!”

Learning Activity #3

Mejia vs. City of
New York
2020

Mejia vs. City of
San Francisco
20??

Role of Interpreters/Translators



Three Types of Personnel Used



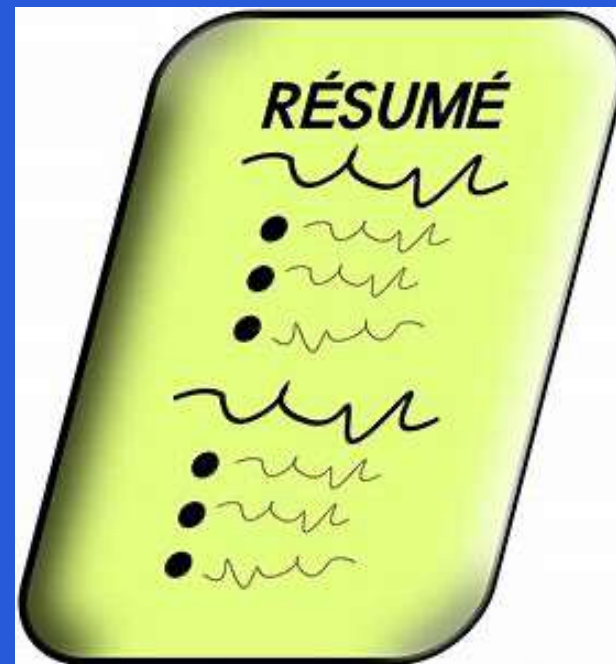
Positioning



Simultaneous vs. Consecutive Interpretation



Report Writing Elements



Town Hall/ Broadcast Considerations



Crime Scene Considerations



Organization and Human Resources



Language Access Vendors

Who does your agency use?



LanguageLine
Solutions®



POST-TEST 1 of 4

- Dispatch advised there is an unknown type of complaint at 3121 Main St where yelling and screaming are heard in the background. The caller is speaking in broken English and the call taker was only able to hear the words “knife” and “blood”. Dispatch is unable to decipher the language at this point.

1) What can you do to ascertain the caller's language as officers respond to this high priority call?

2) If the language is deciphered prior to officers arriving on scene, what can you do to prepare?

POST-TEST 2 of 4

- The language has been deciphered just as officers arrive on scene. Dispatch advised the caller is speaking in Spanish.
- While at the front door, an elderly female opened the door with an approximately fifteen-year-old juvenile male. The elderly female spoke to the juvenile in Spanish and the juvenile told the officers in English “hurry to the bedroom”. Officers search the residence and observe a male and a female inside a small bedroom. The male is holding a butcher knife, yelling at a female, who is crouching down in a corner, crying and bleeding from the head. Officers tell the male to drop the knife, but he appeared confused and continues to yell at the female while holding the knife.

What can officers do to gain compliance from the male?

POST-TEST 3 of 4

- The male, still holding the knife, starts walking towards the female. An officer opens fire at the male but misses. The male immediately drops the knife and is taken into custody by officers. The injured female is assessed and released by medics and the scene is secured.
- What are some ways to gather information from the involved parties, who all speak primarily Spanish?

POST-TEST 4 of 4

- Due to the nature of the incident (an officer-involved shooting), the department will be holding a town hall meeting to address questions and concerns from the community. Many individuals from the Spanish speaking community are expected to show up.
- How would you set up the community meeting to ensure that LEP individuals will understand and be heard?