



# RICHMOND STATION NEWSLETTER

February 17, 2022



CAPTAIN GAETANO CALTAGIRONE

COMMANDING OFFICER  
RICHMOND STATION

461 6TH AVENUE  
SAN FRANCISCO, CA 94118

STATION: 415.666.8000



Hello Richmond District Residents and Merchants,

San Francisco is celebrating the Lunar New Year with our city’s world-famous parade – the largest in the United States. The Chinese New Year Parade will be held on February 19, 2022. Unfortunately, the Lunar New Year is a peak time for scammers. We urge you to beware of strangers seeking cash in exchange for curing your illness or lifting a curse. If you are approached by a potential scammer, we urge you to contact the police at our non-emergency number: (415) 553-0123.

For more information visit: [Lunar New Year FAQ](#)

- Captain Gaetano Caltagirone

LEARN MORE ABOUT  
THE SAN FRANCISCO  
POLICE DEPARTMENT

Meet SFPD Chief  
William “Bill” Scott

JOIN SFPD

BE HEARD  
GET INVOLVED

Community Meeting  
February 22, 2022  
5:00 PM - 6:00 PM  
Zoom Meeting

## TABLE OF CONTENTS

- Captain’s Message ..... 1
- Vision and Values..... 2
- Events in District ..... 3
- Crime Trends..... 4 - 9
- SFPD Press Releases..... 10 - 11
- Crime Prevention ..... 12 - 19
- SFPD Surveys ..... 20
- Join SFPD ..... 21
- Resources ..... 22 - 24


# RICHMOND STATION VISION AND VALUES

Richmond Station supports the Department's Community Policing Vision and Values and is committed to creating a safe, healthy, and vibrant community. Our spirit is guided by a guardian mindset, and we recognize that our role as protectors is rooted in empathy, understanding, and mutual respect.

Community policing, or community-oriented policing, is a strategy of policing that focuses on police building ties and working closely with members of the communities. Richmond Station uses the following methods to engage with the community:

- **Homeless Outreach:** Officers coordinate with multiple city agencies to provide assistance and offer city services. Officers address quality of life issues and find programs for willing individuals.
- **Foot Patrol:** Richmond Station has dedicated foot patrols on Clement Street, Geary Blvd, and Laurel Village/Sacramento Street corridors.
- **Community Meetings:** Community Meetings are held once a month for the public and residents of the Richmond District to attend. People can voice their questions or concerns about issues in the Richmond District.

CLICK EACH IMAGE FOR MORE INFORMATION:



Everyone deserves to be treated fairly.

SFPD officers undergo Implicit Bias & Procedural Justice training. Our goal is ensure fair, impartial community policing.

We're dedicated to providing *Safety With Respect for All.*

Learn about our ongoing efforts to eliminate bias and increase accountability at [sanfranciscopolice.org/bias-free](https://www.sanfranciscopolice.org/bias-free).





## EVENTS IN THE RICHMOND DISTRICT

### CLEMENT STREET FARMERS MARKET

**Date:** February 20, 2022

**Time:** 9:00 am – 2:00 pm

**Location:** Clement Street between Arguello Blvd and 4th Avenue

### RICHMOND STATION VIRTUAL COMMUNITY MEETING

**Date:** February 22, 2022

**Time:** 5:00 pm – 6:00 pm

**Details:** Please use the link below to register for the community meeting

[Zoom Registration](#)

## WHAT YOU NEED TO KNOW THIS MONTH

**I think I have been a victim of a scam! What do I do?**

Financial crimes include phone scams, counterfeit money, identity theft, and embezzlement. Scammers often target the elderly, low-income people, and business owners. In some cases, scammers have posed as IRS, courts, or utility representatives to cheat victims out of their money. In all of these cases, your first step is making a police report in person at your local district station or online [here](#). Next, preserve what evidence you may have. Evidence includes eyewitness accounts and/or documents. Useful documents include account statements, receipts and canceled checks. Finally, contact all your banking services and credit bureaus to notify them of the incident, as you may need to close your account or put a hold on your credit. For more information, visit our FAQ here: [Financial Crimes](#)

# WEEKLY CRIME DATA



## SAN FRANCISCO POLICE DEPARTMENT Crime Data

Comparing a Date Range within One Year to Its Prior Year

Richmond

2/7/2022 - 2/13/2022

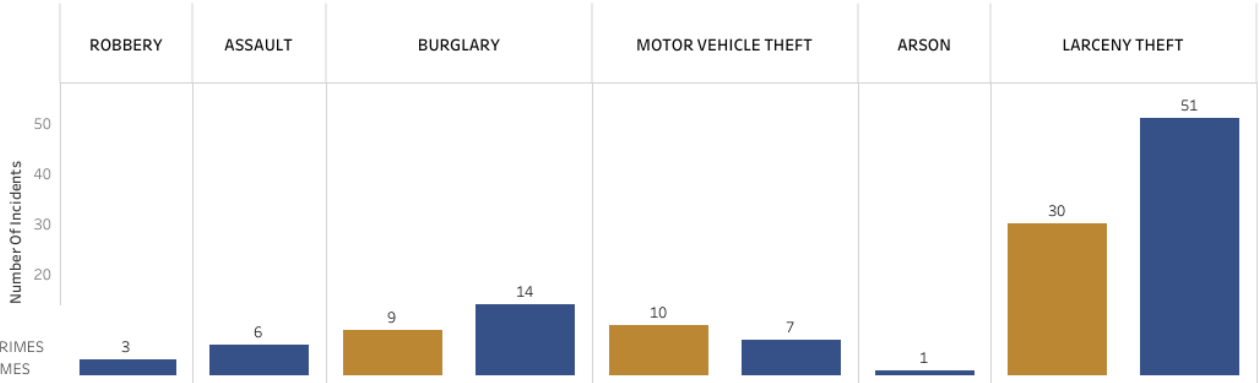
Please select:

### District

- Bayview
- Central
- Ingleside
- Mission
- Northern
- Park
- Richmond
- Southern
- Taraval
- Tenderloin
- Courtesy Reports

### Type Of Crime

- PART 1 PROPERTY CRIMES
- PART 1 VIOLENT CRIMES



Start Date (1/1/2017 onward)

2/7/2022

End Date

2/13/2022

■ Selected Date Range

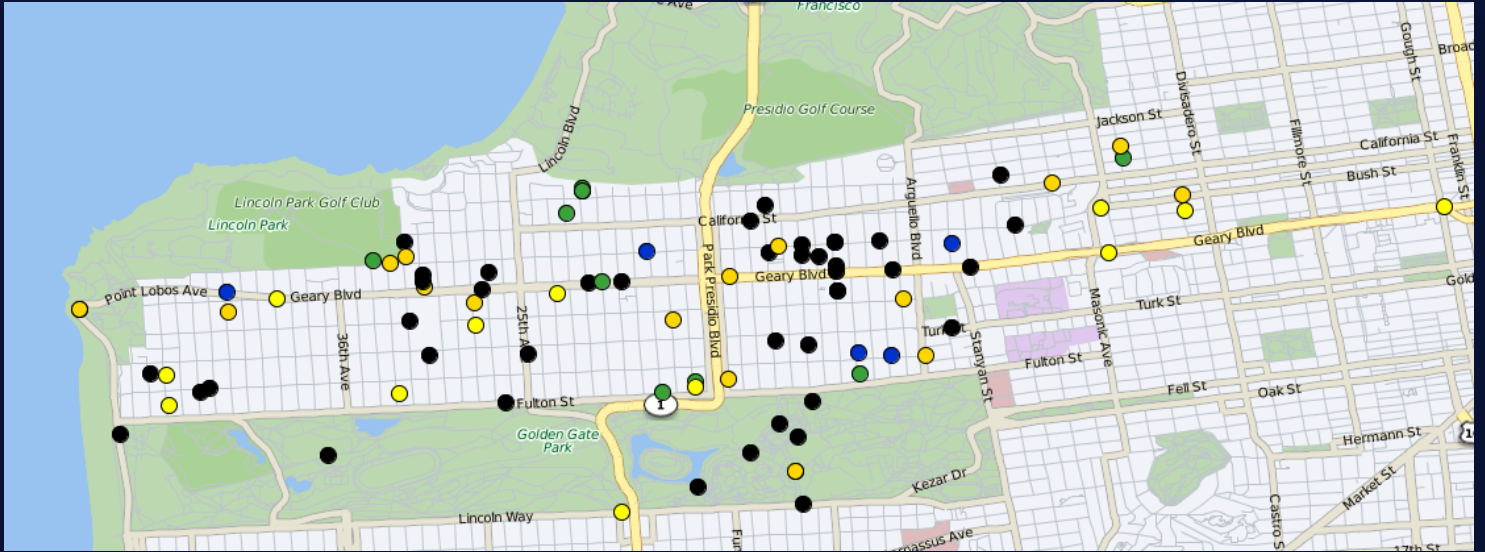
■ Selected Date Range, Prior Year

| Crime               | Selected Date Range | Selected Date Range, Prior Year | Year-to-Year % Decrease or Increase |
|---------------------|---------------------|---------------------------------|-------------------------------------|
| ROBBERY             |                     | 3                               | -100.0%                             |
| ASSAULT             |                     | 6                               | -100.0%                             |
| BURGLARY            | 9                   | 14                              | -35.7%                              |
| MOTOR VEHICLE THEFT | 10                  | 7                               | 42.9%                               |
| ARSON               |                     | 1                               | -100.0%                             |
| LARCENY THEFT       | 30                  | 51                              | -41.2%                              |
| <b>TOTAL</b>        | <b>49</b>           | <b>82</b>                       | <b>-40.2%</b>                       |

Crime data updated weekly and valid through February 13, 2022

**DISCLAIMER: Due to the 24-7 nature of policing, incident-specific reporting, and the near-live nature of these data, these data shift daily. As a result of modifications and additional information that is provided by police personnel and the public, changes to incidents occur, as do the summaries of data seen here.**

# WEEKLY CRIME DATA



[Crime Dashboard](#) - Use this link to search crime data on [SanFranciscoPolice.org](#)

## Part I

- Homicide
- Arson
- Rape
- Robbery
- Aggravated Assault
- Burglary
- Other Larceny
- Auto Boosting
- Motor Vehicle Theft
- Recovered Vehicle

## Part II

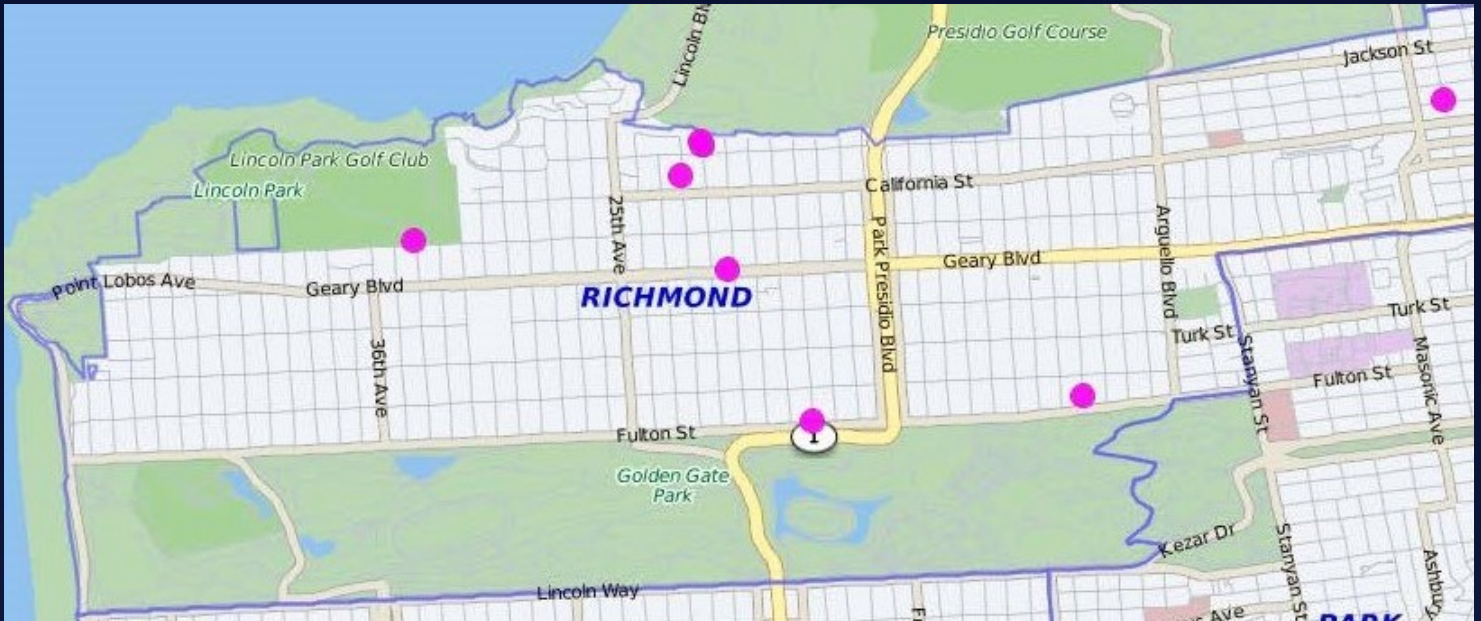
- Other Assault
- Forgery and Counterfeiting
- Fraud and Worthless Checks
- Embezzlement
- Receiving Stolen Property
- Weapons, Carrying, Etc.
- Vice, Prostitution
- Sex Offenses (not Rape)
- Narcotics
- Gambling
- Offenses Against Family and Child
- Malicious Mischief
- Liquor Laws
- Disorderly Conduct
- Juvenile Offenses
- Other Municipal Offenses
- Other Miscellaneous

# WEEKLY CRIME DATA - BURGLARY

Weekly COMPSTAT Part 1 Crimes Detail- from 02-07-2022 To 02-13-2022\*

\*\*\*RICHMOND\*\*\*

|             | Crime Category | Crime Subcategory         | This Week | Last Week | % Change | 2022 YTD | 2021 YTD | % Change |
|-------------|----------------|---------------------------|-----------|-----------|----------|----------|----------|----------|
| PART I      | BURGLARY       | Attempted Forcible Entry  | 2         | 1         | 100.00%  | 12       | 27       | -55.56%  |
|             |                | Forcible Entry            | 4         | 7         | -42.86%  | 26       | 66       | -60.61%  |
|             |                | Unlawful Entry - No force | 3         | 3         | 0.00%    | 15       | 41       | -63.41%  |
| Grand Total |                |                           | 9         | 11        | -18.18%  | 53       | 134      | -60.45%  |

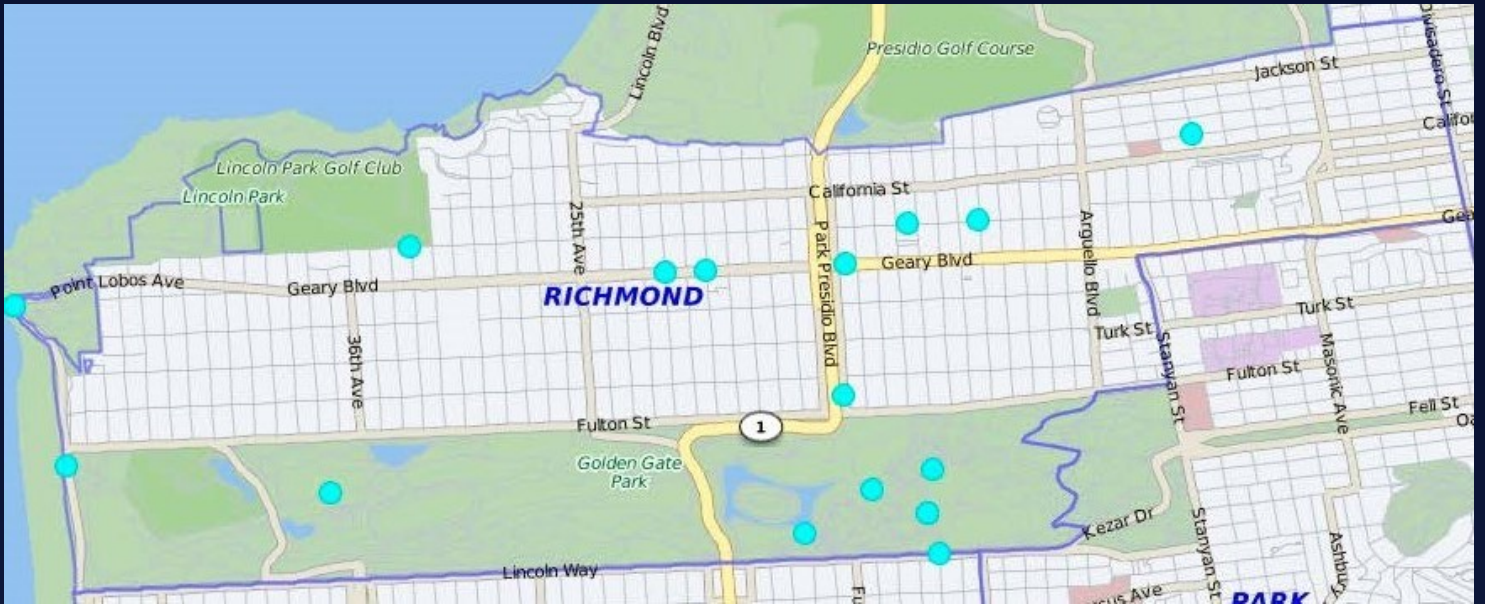


# WEEKLY CRIME DATA - AUTO BURGLARY

Weekly COMPSTAT Part 1 Crimes Detail- from 02-07-2022 To 02-13-2022\*

\*\*\*RICHMOND\*\*\*

|             | Crime Category | Crime Subcategory | This Week | Last Week | % Change | 2022 YTD | 2021 YTD | % Change |
|-------------|----------------|-------------------|-----------|-----------|----------|----------|----------|----------|
| PART I      | LARCENY THEFT  | Auto Burglaries   | 20        | 55        | -63.64%  | 262      | 169      | 55.03%   |
| Grand Total |                |                   | 20        | 55        | -63.64%  | 262      | 169      | 55.03%   |



# WEEKLY CRIME DATA - ROBBERY

Weekly COMPSTAT Part 1 Crimes Detail- from 02-07-2022 To 02-13-2022\*

\*\*\*RICHMOND\*\*\*

|             | Crime Category | Crime Subcategory           | This Week | Last Week | % Change | 2022 YTD | 2021 YTD | % Change |
|-------------|----------------|-----------------------------|-----------|-----------|----------|----------|----------|----------|
| PART I      | ROBBERY        | Firearm                     | 0         | 0         | 0.00%    | 2        | 1        | 100.00%  |
|             |                | Knife or Cutting Instrument | 0         | 0         | 0.00%    | 0        | 2        | -100.00% |
|             |                | Other Dangerous Weapon      | 0         | 0         | 0.00%    | 0        | 6        | -100.00% |
|             |                | Strongarm (no weapon)       | 0         | 0         | 0.00%    | 4        | 11       | -63.64%  |
| Grand Total |                |                             | 0         | 0         | 0.00%    | 6        | 20       | -70.00%  |



# INCIDENTS IN THE RICHMOND DISTRICT THIS WEEK

**CASE NUMBER: 220097996**

**FIRE WITH INJURIES**

**02/12/2022 - 1330hrs**

**300 Block of 10th Ave**

**Officers responded to a three-alarm house fire. One resident was injured with a burn to the face but in a stable condition at the hospital. Arson Investigator advised that it did not appear to be signs of arson at this time.**



City and County of San Francisco  
**POLICE DEPARTMENT**  
**MEDIA RELATIONS UNIT**  
1245 3<sup>RD</sup> Street, 6<sup>TH</sup> Floor  
San Francisco, California 94158



## **NEWS RELEASE**

**SFPD concludes virtual town hall on Jan. 20 officer-involved shooting fatality at SFO's International Terminal 22-010(a)**

**San Francisco Police Safety Tips for Lunar New Year Festivities 22-015**

**SFPD Chief Bill Scott terminates MOU with D.A.'s Office over court revelations that prosecutors withheld evidence in investigations 22-015**

**San Francisco Police Investigate Potrero Ave Homicide 22-017**

**San Francisco Police Investigating Bank Robbery Series 22-018**

**San Francisco Police Makes Arrest in Potrero Ave Homicide 22-017(a)**

**San Francisco Police Seeking Public's Assistance with Missing Person Investigation 22-019**

**San Francisco Police Investigating Outer Sunset Homicide 22-020**

**Police Chief Scott welcomes Attorney General Bonta's progress report on Collaborative Reform Initiative's 21st century policing reforms 22-021**

**San Francisco Police Arrest Attempted Homicide Suspect 22-023**

**For more SFPD news please visit: [SanFranciscoPolice.org/news](https://www.sanfranciscopolice.org/news)**



City and County of San Francisco  
**POLICE DEPARTMENT**  
**MEDIA RELATIONS UNIT**  
1245 3<sup>RD</sup> Street, 6<sup>TH</sup> Floor  
San Francisco, California 94158



## MEDIA ADVISORY

November 17, 2020  
037-20

### **San Francisco Police Release Burglary Awareness Crime Prevention Video**

The San Francisco Police Department would like to remind the public to stay safe and help protect yourself from vehicle and home burglaries. Below are some simple steps you can take to help prevent your home or vehicle from being burglarized.

- Do not leave valuables in your vehicle
- Remove garage door opener from your vehicle if parked outside your garage
- Lock the door from your garage leading inside your home
- "Block the cord" – garage door openers have an emergency release cord that, when pulled, disconnects the door from the mechanism thereby making it easy for burglars to enter your garage

For more information on how to protect yourself, your family and your home from burglary please click on the link below and watch our safety video.

The video can be viewed by clicking this link: <https://vimeo.com/477012071>

###

Tel. 1-415-837-7395

Fax 1-415-837-7249

E-mail: [sfpdmediarelations@sfgov.org](mailto:sfpdmediarelations@sfgov.org)

 [twitter.com/sfpd](https://twitter.com/sfpd)

 [facebook.com/sfpd](https://facebook.com/sfpd)

 [sanfranciscopolice.org](https://sanfranciscopolice.org)

SFPD 96 (11/15)

# IF YOU SEE SOMETHING, SAY SOMETHING...

Suspicious activity is any observed AND articulable behavior that could indicate a crime-related incident has been committed, or is about to be committed. Articulable means you are capable of expressing, explaining, or justifying to our dispatchers and/or officers that you believe a person violated a law or regulation. Race, gender, religion, socio-economic status, style of dress, choice of hairstyle, etc. should NEVER be a factor in classifying someone as suspicious. Some examples of suspicious activity:

- Individual(s) peering into vehicles to try and locate any valuables left unattended.
- Individual(s) trying door handles to vehicles and/or residences to gain access.
- Individual(s) following delivery trucks to see where the truck is dropping off packages.

While this isn't an exhaustive list, nor absolute confirmation of a crime, we hope these examples will assist you should you ever need to call the police.

## ASK US

### *What happens after Police take a dog bite report?*

Responding police officers have the authority to impound any dog that threatens the health safety and welfare of the community. Impounded dogs are usually held in custody pending a Vicious and Dangerous Dog Hearing. The San Francisco Department of Public Health has appointed neutral, independent hearing officers to decide whether or not a dog is vicious and dangerous under the law and what remedy, if any, should be imposed to protect the safety of the public. The purpose of a Vicious and Dangerous Dog Hearing is to protect the health, safety and welfare of the public by determining which remedies would prevent the dog in question from presenting future risk to the public. Such remedies may include obedience training, muzzling, property inspection (containment of the dog) or, more often than not, educating the dog owner to make a specific change as to how the dog is controlled.

For more information, visit: [SFPD Vicious and Dangerous Dog Unit](#)

To submit your own "Ask Us" question, please email [SFPDRichmondStation@sfgov.org](mailto:SFPDRichmondStation@sfgov.org)

# CRIME DEFINITIONS

**HOMICIDE:** Murder and non-negligent manslaughter is the willful killing of one human being by another. Deaths caused by negligence, attempts to kill, assaults to kill, suicides, and accidental deaths are excluded. Manslaughter by negligence is the killing of another person through gross negligence. Deaths of persons due to their own negligence, accidental deaths not resulting from gross negligence, and traffic fatalities are not included in the category of manslaughter by negligence.

**RAPE:** Penetration, no matter how slight, of the vagina or anus with any body part or object, or oral penetration by a sex organ of another person, without the consent of the victim. Attempts or assaults to commit rape are also included; however, statutory rape and incest are excluded.

**ROBBERY:** The taking or attempting to take anything of value from the care, custody, or control of a person or persons by force or threat of force or violence and/or by putting the victim in fear.

**AGGRAVATED ASSAULT:** An unlawful attack by one person upon another for the purpose of inflicting severe or aggravated bodily injury. This type of assault usually is accompanied by the use of a weapon or by means likely to produce death or great bodily harm. Simple assaults are excluded.

**BURGLARY:** The unlawful entry of a structure to commit a felony or a theft. Attempted forcible entry is included.

**LARCENY (aka THEFT):** The unlawful taking, carrying, leading, or riding away of property from the possession or constructive possession of another. Examples are thefts of bicycles, motor vehicle parts and accessories, shoplifting, pickpocketing, or the stealing of any property or article that is not taken by force and violence or by fraud. Attempted larcenies are included. Embezzlement, confidence games, forgery, check fraud, etc., are excluded.

**MOTOR VEHICLE THEFT:** The theft or attempted theft of a motor vehicle. A motor vehicle is self-propelled and runs on land surface and not on rails. Motorboats, construction equipment, airplanes, and farming equipment are specifically excluded from this category.

**ARSON:** Any willful or malicious burning or attempting to burn, with or without intent to defraud, a dwelling house, public building, motor vehicle or aircraft, personal property of another, etc.



# PREVENT GARAGE DOOR BREAK-INS



Garages can sometimes be the most vulnerable area of the home and they are often the entry point most targeted by thieves because of the easy access to the home. Here are some tips to help secure your garage and protect it from theft.



## ALWAYS CLOSE YOUR GARAGE DOOR

This may seem obvious, but just drive through any residential neighborhood and you'll likely see a few wide-open garage doors. This is an invitation to burglars and at the very least, you're allowing passersby to easily view the contents of your garage.



## INSTALL MOTION-SENSITIVE LIGHTS

Homes and garages with poor exterior lighting become more appealing targets for burglars. Ensure all entry points are well-lit. Constant lighting supplemented by motion sensitive lighting is best.



## REINFORCE THE GLASS ON THE GARAGE DOOR

Add vinyl adhesive to reinforce garage windows. You can also opt for a frosted or translucent glass design to allow sunlight in while obscuring contents inside.



## DON'T LEAVE GARAGE DOOR REMOTE IN YOUR CAR

A garage door remote is basically another key into your home and thieves won't hesitate to use it if they find it. Opt to use a remote on a keychain.



## INSTALL AN INTERIOR MANUAL GARAGE DOOR LOCK

When leaving on a vacation or for extended periods of time, disconnect automatic door motor and install a manual lock.



## TIE EMERGENCY RELEASE CORD

Tying your emergency release cord into a small ball will make it more difficult to reach by thieves who manage to break the garage windows.



## INSTALL SURVEILLANCE CAMERAS

There should be at least 1 exterior mounted camera facing the street and registered with the D.A.'s office.



## SECURE ANY VALUABLES

Keep all tools in cabinet systems with locks and be sure to hang and lock any bicycles. As much as possible, try to avoid keeping valuable items in the garage or inside vehicles.



## HAVE A QUALITY, FUNCTIONING GARAGE DOOR

Garage doors should be as secure, sturdy, and well-built as your front door and should remain in good condition and tight fitting. Deadbolts should also be added to the garage-to-house door.



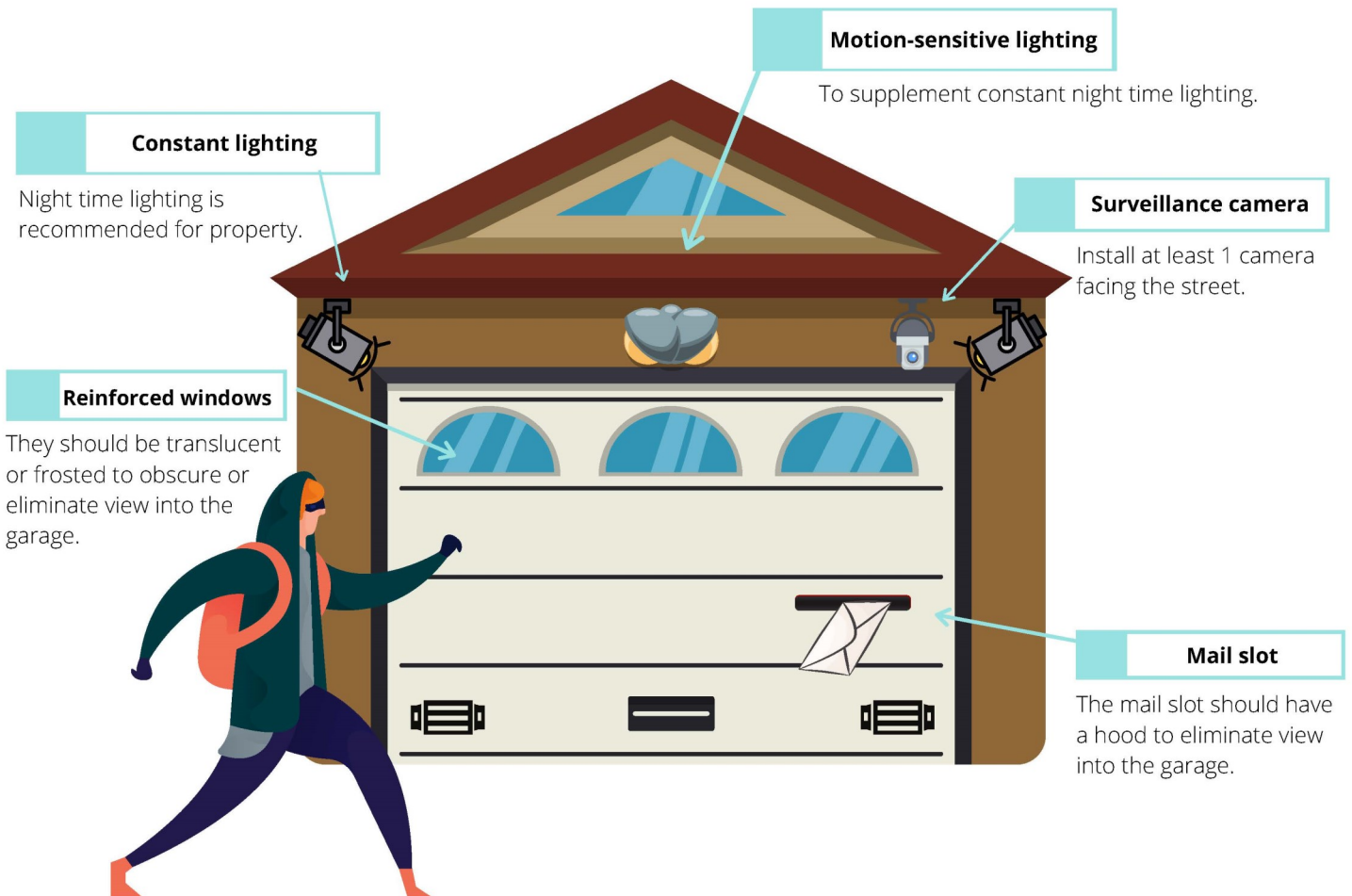
## INSTALL INTERIOR MAIL SLOT HOOD COVER

If the garage door is equipped with a mail slot, a hood cover will prevent any view into the garage and its contents, eliminating enticement to enter.



# PREVENT GARAGE DOOR BREAK-INS

## ANATOMY OF A SAFE GARAGE



### Your home is only as safe as its weakest entry point.

Your garage is an important part of your home and securing your garage is one of the most essential steps to securing your entire home. It is always recommended to regularly check and update your home's security system and safety measures.

For more information, please contact SF SAFE at (415) 553-1984 or visit [sfsafe.org](http://sfsafe.org).



**PREVENTION**

- Are there any valuables or seemingly insignificant loose items visible in your car?
  - Place all loose items in the trunk of your car before you arrive to your destination to ensure thieves won't know what you are hiding.
- Traveling from out of town?
  - Check your luggage at the hotel instead of keeping it in your car.



**BROKEN WINDOW  
OR TRUNK**

- Is the break-in happening right now?
  - Call 9-1-1 with your location and suspect description.
- Did the break-in already happen?
  - File a police report on-line ([www.sanfranciscopolice.org/reports](http://www.sanfranciscopolice.org/reports)), or call 3-1-1.



**CAR BREAK-IN**

- What was stolen? Make a list of stolen items.
  - Although not required, you should provide the estimated value along with serial numbers to any electronics on a police report that can be filed online ([www.sanfranciscopolice.org/reports](http://www.sanfranciscopolice.org/reports)), or call 415-553-0123.
  - If credit cards were stolen, cancel them as soon as possible and check to see if any unauthorized activity has occurred. If so, include this activity on the police report.
  - If an original passport or social security card was stolen, go to the nearest police station.



**FIREARMS THEFT**

- Was any type of firearm stolen?
  - If so, immediately go to a police station or call the police non-emergency line: 415-553-0123.



**REPORTING**

- Is a police report needed for an insurance claim?
  - A formal police report can be completed online ([www.sanfranciscopolice.org/reports](http://www.sanfranciscopolice.org/reports)), in person at any San Francisco Police Station, or by calling 3-1-1.



**MAKE THE  
RIGHT CALL**

KEEP 9-1-1 AVAILABLE FOR EMERGENCIES

**3-1-1**

CITY SERVICES & INFORMATION  
AVAILABLE 24/7

**415-553-0123**

POLICE NON-EMERGENCY ASSISTANCE  
AVAILABLE 24/7



# Park Smart!



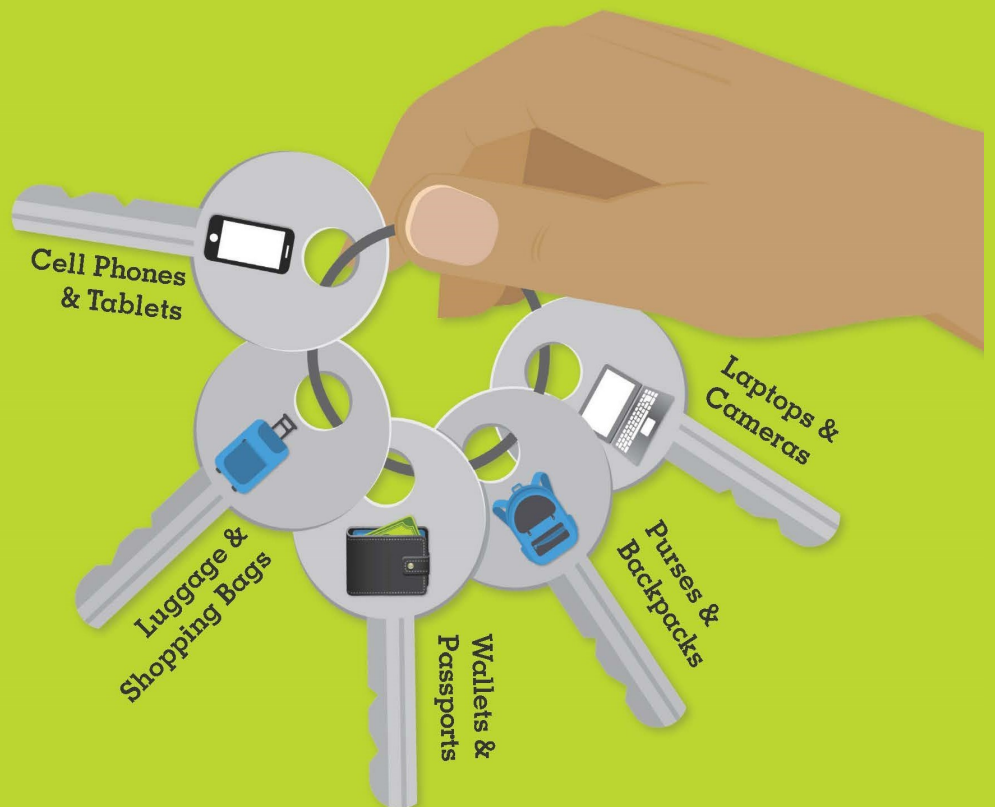
THE KEYS TO  
PARKED CAR  
SAFETY ARE IN  
**YOUR HANDS!**

**If you love it, don't leave it.**

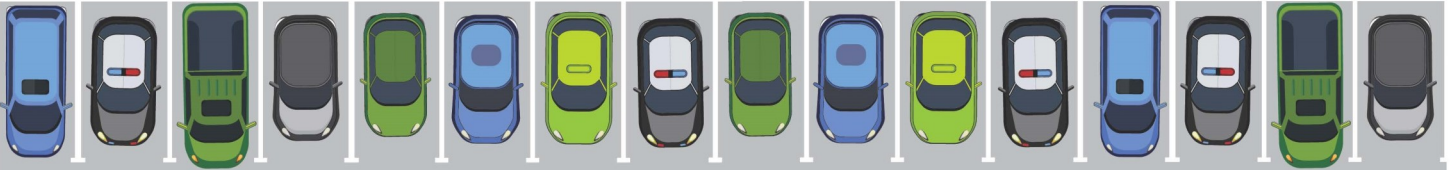
## **DON'T TEMPT A CAR THIEF!**

Car thieves only need seconds to break into your car. So Park Smart, and especially keep your trunk clear.

**Take everything  
with you.**



# Park Smart!



## Safe Habits to Adopt:



### Turn off the ignition

Never leave your car running unattended



### Keep your vehicle & tires in good condition

to prevent breakdowns—stranding you in a dark or unfamiliar place



### Lock your doors

when you get in your car



### See something, say something

If you see a motorist in distress, call 9-1-1 versus stopping to help



### Clear your trunk

and take your valuables with you every time you leave your car



### If you are being followed,

drive to the nearest police or fire station—a populated area is a good default



## WHY CREATE A SAFE NEIGHBORHOOD WATCH GROUP?

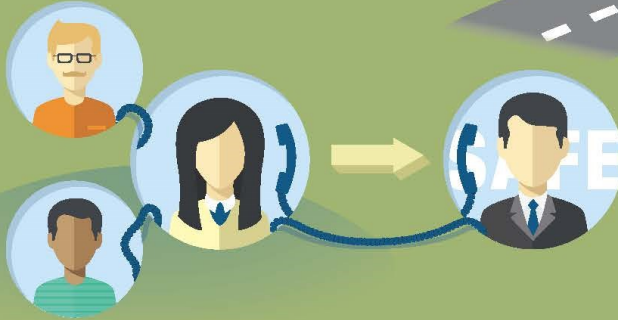
You don't feel safe

You don't know all your neighbors

The streets in your neighborhood are dirty

The streetlights don't work

You want to create a stronger community



## GETTING STARTED

Recruit a few friends on your block

Contact SAFE to assist you

Create a planning committee & meet with a SAFE representative

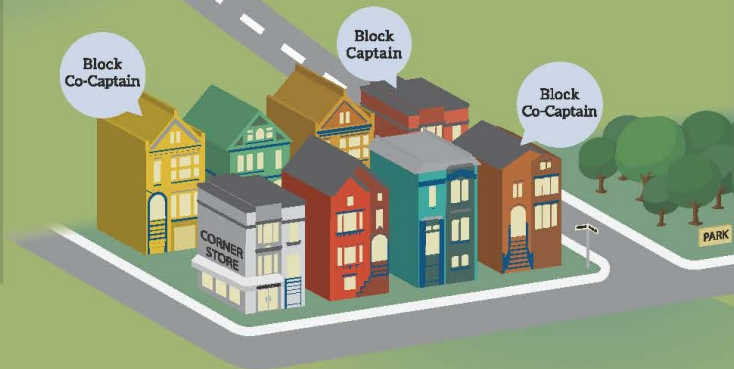
## HOW IT WORKS

Problem-solve with police and other agencies

Create communication plan—phone, text, or email

Create a neighborhood emergency preparedness plan

Designate one Block Captain & two Block Co-Captains



## WHAT DOES A NEIGHBORHOOD WATCH GROUP DO?

**Meet regularly at least 4 times a year**

Meetings

Gatherings

Block Parties

Community Gardens

**Invite guest speakers to meetings**

SFPD

Mayor's Office

911 Call Center

District Supervisors

**Take classes together**

NERT

ALERT

CPR/ First Aid

Self-Defense

**Organize days to**

Reclaim walls covered with graffiti

Clean up the local park

Volunteer for a local charity

# SFPD COMMUNITY SURVEYS

The San Francisco Police Department is committed to excellence in law enforcement and is dedicated to the people, traditions and diversity of our City. Our mission is to provide service with understanding, response with compassion, performance with integrity and law enforcement with vision.

As part of our ongoing outreach to engage with the community and measure our success, the Department has created a community survey link to obtain valuable community feedback for our community events and programs, which will assist the Department in the development of our strategies to meet the needs of the community. If you have recently attended or participated in an event or program hosted by the Department (such as Coffee with a Cop, National Night Out, ALERT program, Youth Summer program, Community Academy or Town Hall Meeting), and have feedback regarding the event or program you attended, please take some time to fill out our community survey.

The Department has also developed a Foot Beat/Bike Patrol survey to gather valuable community feedback on the effectiveness of the Foot Beat/Bicycle Patrol, as it relates to community policing and crime strategies and an Implicit Bias survey to measure progress in the Department's commitment to impartial policing and procedural justice. Please take the time to fill out the Foot Beat/Bicycle and Implicit Bias surveys.

If you have already filled out a survey, thank you! Your response will help SFPD better serve our City and continue to support our community through Safety with Respect.

Click one of the stars below to access a survey.





## BE A PART OF SAN FRANCISCO'S FINEST!

San Francisco is a world-class city with a world-class police force. From Fisherman's Wharf to Golden Gate Park and from Nob Hill to the Tenderloin, whether we're on foot patrol, horseback, or in squad cars, investigating felonies, responding to emergencies or leading classes on public safety, we're working with you to help keep our community safe. We welcome prospective recruits who desire to serve and protect the City of San Francisco and its people under the principles of law, justice, and our commitment to providing safety with respect for all.

Want to experience a day in the life of a SFPD patrol officer? Watch our video here: <https://vimeo.com/375703355>

To apply as a Sworn Entry Level Police Officer, please follow the 2-step process:

1. Apply with the City and County of San Francisco by clicking here: [Apply to CCSF](#)
2. Go to [www.nationaltestingnetwork.com](http://www.nationaltestingnetwork.com), choose Law Enforcement, and register to take the San Francisco Police Department written exam.

For more information, please visit: [Sworn Job Openings](#)

Or contact the San Francisco Police Department - Recruitment Unit at 415-837-7270 or [joinsfpd@sfgov.org](mailto:joinsfpd@sfgov.org)

# SAN FRANCISCO RESOURCE CARD

**Sup. Catherine Stefani**  
 (415) 554-7752  
 Catherine.Stefani@sfgov.org



**Sup. Connie Chan**  
 (415) 554-7410  
 chanstaff@sfgov.org



**Mayor's Office**  
 (415) 554-6141  
 MayorLondonBreed@sfgov.org



**Police Commission**  
 (415) 837-7070  
 sfpd.commission@sfgov.org



**Department of Police Accountability**  
 (415) 241-7711  
 sfdfa@sfgov.org



**City Services & Questions**  
 3-1-1



**Municipal Transportation Agency (MTA)**  
 (415) 554-7410  
 chanstaff@sfgov.org



**Emergencies**  
 9-1-1



**Non-Emergency Line**  
 (415) 553-0123



**Anonymous Tip Line**  
 (415) 575-4444



**District Attorney's Office**  
 (628) 652-4000  
 districtattorney@sfgov.org



**Department of Public Works**  
 (628) 271-3160  
 dpw@sfdpw.org



**Department of Homelessness & Supportive Housing**  
 (628) 652-7700  
 dhsh@sfgov.org



**SFPD Richmond Station**  
 (415) 666-8000  
 SFPDRichmondStation@sfgov.org



**San Francisco SAFE**  
 (415) 553-1984  
 www.sfsafe.org



**City Attorney's Office**  
 (415) 554-4700  
 cityattorney@sfcityatty.org



*Whether you live in a single family home, condo, or a large apartment complex in San Francisco, there are a number of ways you can keep your residence safe and secure.*

# FREQUENTLY ASKED QUESTIONS

## HOW DO I ADD INFORMATION TO A COMPLETED POLICE REPORT?

There are two ways to add information to a completed SFPD Police Incident Report:

1. **In Person** – You may go to any police station in San Francisco and request to complete a Supplemental Report. Please be prepared to provide your original case number.
2. **Online** – Using our online portal is the most convenient way to document additional property loss to the initial report, additional details that may assist the investigation, and/or additional details to describe stolen property, such as a serial number. You can access the online portal here: [SFPD Online Reporting System](#).

For more information, please visit: [File a Police Report](#).

## HOW DO I REQUEST A COPY OF MY POLICE INCIDENT REPORT?

There are three ways to obtain a copy of your SFPD Police Incident Report:

1. **In Person** -- You may request a copy in person **ONLY** at SFPD Police Headquarters Crime Information Services Unit at 1245 Third Street during normal business hours (Monday - Friday, 8 am-5 pm, and Closed on Holidays). Reports are **NOT** available through the district stations.
2. **In the Mail** -- Download the [Request for Incident Report Form](#) and mail it to the address listed on the form.
3. **Online** -- Using our new online portal is the most secure and convenient way to request and receive incident reports from the San Francisco Police Department. Visit the portal here: [Request a Police Incident Report Copy](#)

For more information, please visit: [Request a Police Incident Report Copy](#)

# RICHMOND STATION CONTACTS

| RESOURCE  | CONTACT  | TELEPHONE      |
|---|--|----------------|
| EMERGENCY   |  | 911            |
| NON-EMERGENCY                                     |  | 415-553-0123   |
| RICHMOND STATION                                  |  | 415-666-8000   |
| RICHMOND STATION ANONYMOUS TIP LINE               |  | 415-668-7387   |
| RICHMOND STATION EMAIL                            | <a href="mailto:sfpdrichmondstation@sfgov.org">sfpdrichmondstation@sfgov.org</a> |                |
| SPECIAL EVENTS SERGEANT                           | SERGEANT L. CUEBA  | 415-666-8012   |
| RICHMOND STATION PERMITS & EVENTS                 | OFFICER M. HODGE   | 415-666-8023   |
| RICHMOND STATION COMMUNITY LIAISON OFFICER        | OFFICER M. HODGE   | 415-666-8023   |
| RICHMOND STATION GEARY BLVD FOOT BEAT OFFICERS    | OFFICER K. IVANOV  | 415-726-1787   |
| RICHMOND STATION CLEMENT ST FOOT BEAT OFFICER     | OFFICER G. LEE   | 415-660-8593   |
|   | OFFICER K. WATSON  | 415-759-3100   |
| RICHMOND STATION SACRAMENTO ST FOOT BEAT OFFICERS | TBD  |                |
| RICHMOND STATION HOMELESS OUTREACH OFFICERS       | OFFICER T. BARTLEY   | 415-696-0590   |
|   | OFFICER A. JOHNSON   | 415-653-6456   |
|   | OFFICER M. ROSS  | 415-696-0459   |
| DEPT. OF PUBLIC WORKS                             | TTY: 415-701-2323  | 311            |
| DEPT. OF PARKING & TRAFFIC / SFMTA                | TTY: 415-701-2323  | 311            |
| S.A.F.E.  |  | 415-553-1984   |
| HOMICIDE TIP LINE                                 |  | 415-431-2127   |
| HUMAN TRAFFICKING TIP LINE                        |  | 415-643-6233   |
| NARCOTICS TIP LINE                                |  | 1-800-CRACK-IT |
| SFPD MEDIA RELATIONS                              |  | 415-837-7395   |
| SFPD COMMUNITY RELATIONS                          |  | 415-837-7245   |



YOU CAN CALL 311 TO CONTACT THE DEPARTMENT OF PUBLIC WORKS AND THE DEPARTMENT OF PARKING AND TRAFFIC/SFMTA. YOU CAN ALSO REPORT/REQUEST:

- STREET OR SIDEWALK CLEANING
- GRAFFITI
- STREETLIGHT REPAIR
- ILLEGAL POSTINGS
- ABANDONED VEHICLES
- AND MUCH MORE... CHECK OUT THEIR WEBSITE AT [SF311.ORG](http://SF311.ORG).