

Richmond Station Newsletter



July 21, 2021



CAPTAIN'S MESSAGE:

Hello Richmond District Residents and Merchants,

Today Chief Bill Scott issued a statement regarding the reauthorized Organized Retail Crime Task Force. The SFPD's role in the task force has assisted in the recovery of millions of dollars in merchandise and cash from criminal enterprises engaged in retail theft activities. The collaborative multiagency task force is used to combat sophisticated criminal enterprises engaging in brazen retail theft in San Francisco and across the state.

For the full press release please use this link [Reauthorization of Organized Retail Crime Task Force](#)

As a reminder our next virtual community meeting is next week on Tuesday, July 27th at 5:00 pm. Please see *Events* on page 5 for the link to register.

Captain Gaetano Caltagirone



Captain Gaetano Caltagirone
Commanding Officer
Richmond Station

CAPTAIN'S MESSAGE	1
CITIZEN OF THE MONTH	2
EVENTS IN DISTRICT	5
CRIME TRENDS	6-11
PRESS RELEASE	12
HOME SAFETY/CRIME PREVENTION	13-17
DEPARTMENT SURVEYS	19
PHONE CONTACT LIST	21

Next Community Meeting
July 27, 2021
5:00 PM-6:00 PM
Zoom Meeting

Chief William Scott's message:
www.sanfranciscopolice.org/your-sfpd/leadership/william-scott

Citizen of the Month

Naomi Hui

Community Relations Manager

The Richmond Neighborhood Center

Naomi started working at the Richmond Neighborhood Center in 2017 as the neighborhood resource liaison. It was an effort to bring the Safety Network Initiative back to the district. The Safety Net was a citywide effort between SFPD and community-based organizations to address safety on both the practical and systemic levels. In her role, Naomi started organizing festivals to engage neighbors through celebration, food and culture to increase their sense of belonging.

Naomi also launched the One Richmond program in 2018 with former Supervisor, Sandra Fewer. One Richmond is a community-building initiative that celebrates four values: Compassion, Inclusiveness, Shopping Local and Civic Pride. The One Richmond office at 802 Clement Street serves as a community hub and resource center and you can learn more about how to get involved at www.onerichmondsf.com.

Since the pandemic, Naomi has launched a virtual racial equity series and has also organized self-defense seminars for seniors in partnership with local merchant, Tat Wong Kung Fu Academy. She looks forward to the city reopening and returning to in-person events that benefit the Richmond district and its diverse community members.



DEFINITION OF SUSPICIOUS ACTIVITY

Suspicious activity is any observed behavior that could indicate a crime-related incident has been committed, or about to be committed. Unusual items or situations: A vehicle is parked in an odd location, a package/luggage is unattended, a window/door is open that is usually closed, or other out-of-the-ordinary situations occur.

Examples of Suspicious Activity:

- ◆ An individual peering into vehicles, to try and locate any valuables left unattended.
- ◆ An individual trying door handles to vehicles, and/or residences to gain access to the vehicle and/or residence.
- ◆ An individual checking front doors of residences to locate any unattended packages, or individuals following delivery trucks to see where the truck is dropping off packages.

IF YOU SEE SOMETHING, SAY SOMETHING

DEFINITION OF COMMUNITY POLICING

Community policing, or community-oriented policing, is a strategy of policing that focuses on police building ties and working closely with members of the communities.

Homeless Outreach: Richmond Station Officers coordinate with city agencies to provide assistance and offer City services as needed. The Officers handle quality of life issues and find programs for willing individuals.

Foot Patrol: Richmond Station has dedicated foot patrols on Clement St., Geary Blvd, Laurel Village/ Sacramento St.

Richmond Station Community Meetings: Community Meetings are held once a month for the public and residents of the Richmond District to attend. People can voice their comments or concerns about issues in the Richmond District.

Type of Crime**Definition**

Homicide	<ul style="list-style-type: none">• Murder and non-negligent manslaughter: the willful (non-negligent) killing of one human being by another. Deaths caused by negligence, attempts to kill, assaults to kill, suicides, and accidental deaths are excluded.• Manslaughter by negligence: the killing of another person through gross negligence. Deaths of persons due to their own negligence, accidental deaths not resulting from gross negligence, and traffic fatalities are not included in the category Manslaughter by Negligence.
Rape	<ul style="list-style-type: none">• Penetration, no matter how slight, of the vagina or anus with any body part or object, or oral penetration by a sex organ of another person, without the consent of the victim. Attempts or assaults to commit rape are also included; however, statutory rape and incest are excluded.
Robbery	<ul style="list-style-type: none">• The taking or attempting to take anything of value from the care, custody, or control of a person or persons by force or threat of force or violence and/or by putting the victim in fear.
Aggravated Assault	<ul style="list-style-type: none">• An unlawful attack by one person upon another for the purpose of inflicting severe or aggravated bodily injury. This type of assault usually is accompanied by the use of a weapon or by means likely to produce death or great bodily harm. Simple assaults are excluded.
Burglary (breaking and entering)	<ul style="list-style-type: none">• The unlawful entry of a structure to commit a felony or a theft. Attempted forcible entry is included.
Larceny	<ul style="list-style-type: none">• The unlawful taking, carrying, leading, or riding away of property from the possession or constructive possession of another. Examples are thefts of bicycles, motor vehicle parts and accessories, shoplifting, pocketpicking, or the stealing of any property or article that is not taken by force and violence or by fraud. Attempted larcenies are included. Embezzlement, confidence games, forgery, check fraud, etc., are excluded.
Motor Vehicle Theft	<ul style="list-style-type: none">• The theft or attempted theft of a motor vehicle. A motor vehicle is self-propelled and runs on land surface and not on rails. Motorboats, construction equipment, airplanes, and farming equipment are specifically excluded from this category.
Arson	<ul style="list-style-type: none">• Any willful or malicious burning or attempt to burn, with or without intent to defraud, a dwelling house, public building, motor vehicle or aircraft, personal property of another, etc. Arson statistics are not included in this table-building tool.

Events in the Richmond District



Title: Clement Street Farmers Market

Date: 7/25/2021

Time: 9:00 am – 2:00 pm

Location: Clement Street between Arguello Blvd and 4th Avenue

Title: Richmond Station Virtual Community Meeting

Date: 7/27/2021

Time: 5:00 pm – 6:00 pm

Details: Please use the link to register for the community meeting

[Zoom registration](#)

Title: National Night Out

Date: 8/3/2021

Time: 4:00 pm – 7:00 pm

Location: 450 7th Ave Muriel Leff Mini Park and back parking lot of Richmond Station off 7th Ave (between Geary and Anza)

Details: Open to all, food, fun, activities, and police and fire vehicles on display.

Weekly Crime Data 7/12/21 –7/18/21



SAN FRANCISCO POLICE DEPARTMENT Crime Data

Comparing a Date Range within One Year to Its Prior Year

Please select:

District

- Bayview
- Central
- Ingleside
- Mission
- Northern
- Park
- Richmond
- Southern
- Taraval
- Tenderloin
- Courtesy Reports

Type Of Crime

- PART 1 PROPERTY CRIMES
- PART 1 VIOLENT CRIMES

Start Date (1/1/2017 onward)

7/12/2021

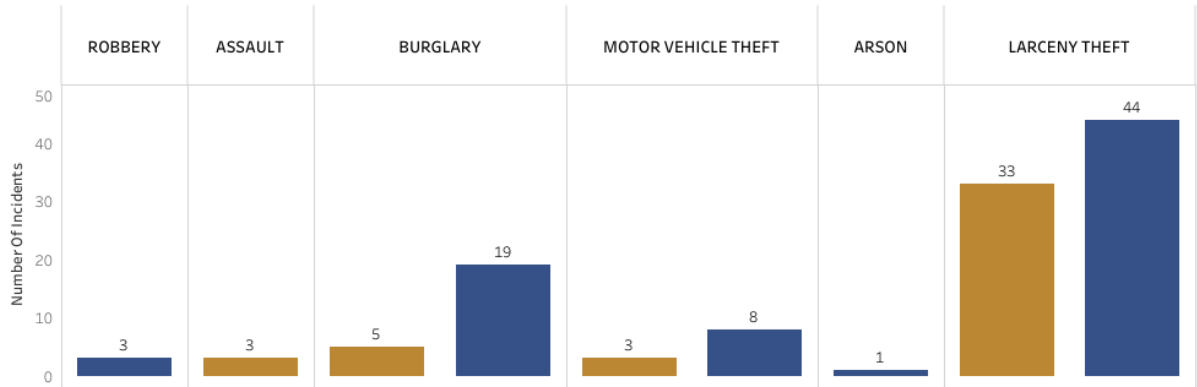
End Date

7/18/2021

■ Selected Date Range

■ Selected Date Range, Prior Year

Richmond
7/12/2021 - 7/18/2021

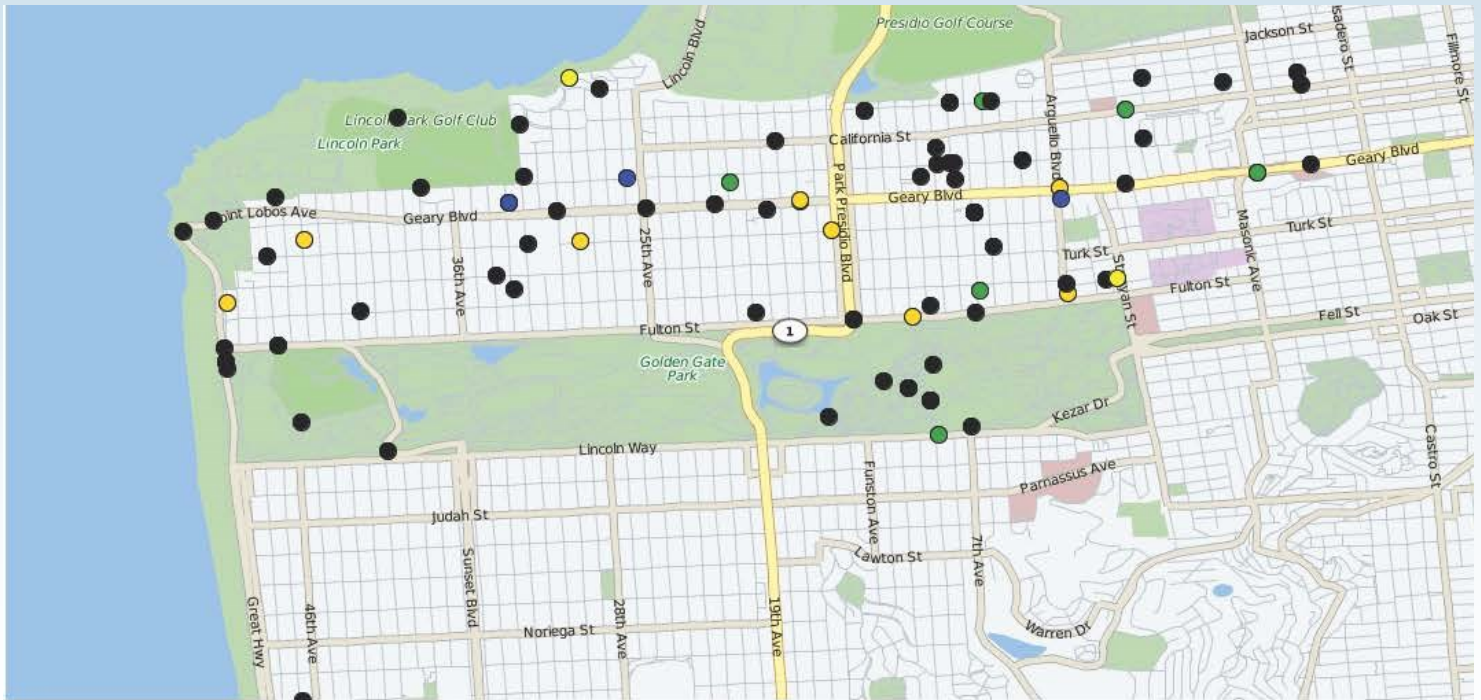


Crime	Selected Date Range	Selected Date Range, Prior Year	Year-to-Year % Decrease or Increase
ROBBERY		3	-100.0%
ASSAULT	3		
BURGLARY	5	19	-73.7%
MOTOR VEHICLE THEFT	3	8	-62.5%
ARSON		1	-100.0%
LARCENY THEFT	33	44	-25.0%
TOTAL	44	75	-41.3%

Crime data updated weekly and valid through July 18, 2021

***Disclaimer:** Due to the 24-7 nature of policing, incident-specific reporting, and the near-live nature of these data, these data shift daily. As a result of modifications and additional information that is provided by police personnel and the public, changes to incidents occur, as do the summaries of data seen here.

Weekly Crime Data 7/12/21 - 7/18/21



- Criminal Homicide ● Aggravated Assault ● Motor Vehicle Theft ● Robbery ● Call for Service (Priority A) ● Call for Service (Priority B)
- Forcible Rape ● Burglary ● Arson ● Larceny ● Call for Service (Priority C) ● All Other

[Crime Dashboard](#) - Use this link to search crime data on [Sanfranciscopolice.org](https://www.sanfranciscopolice.org)

Part I

- Homicide
- Arson
- Rape
- Robbery
- Aggravated Assault
- Burglary
- Other Larceny
- Auto Boosting
- Motor Vehicle Theft
- Recovered Vehicle

Part II

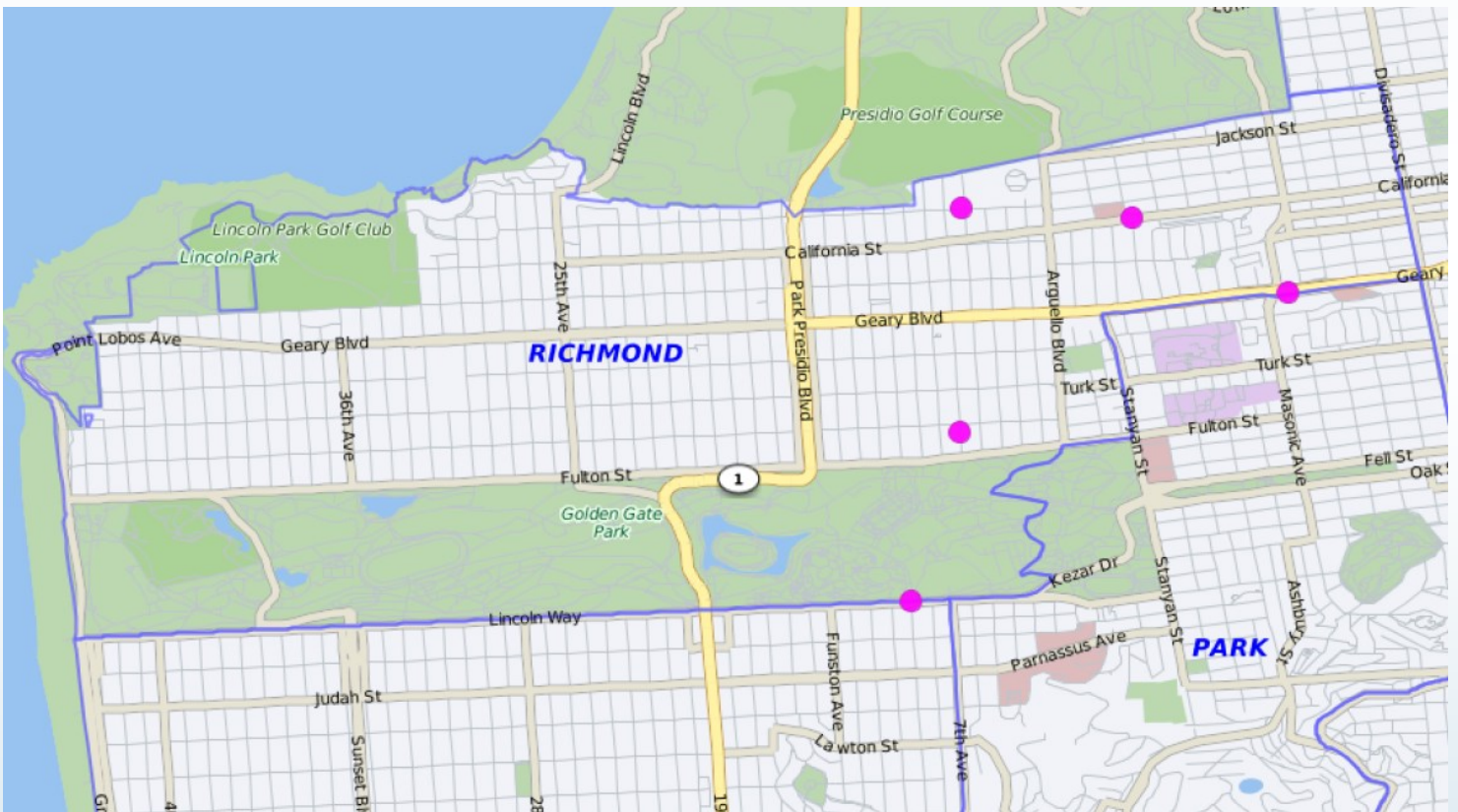
- Other Assault
- Forgery and Counterfeiting
- Fraud and Worthless Checks
- Embezzlement
- Receiving Stolen Property
- Weapons, Carrying, Etc.
- Vice, Prostitution
- Sex Offenses (not rape)
- Narcotics
- Gambling
- Offenses Against Family and Child
- Malicious Mischief
- Liquor Laws
- Disorderly Conduct
- Juvenile Offenses
- Other Municipal Offenses
- Other Miscellaneous

Burglary 7-12-21 to 7-18-21

Weekly COMPSTAT Part 1 Crimes Detail- from 07-12-2021 To 07-18-2021*

RICHMOND

	Crime Category	Crime Subcategory	This Week	Last Week	% Change	2021 YTD	2020 YTD	% Change
PART I	BURGLARY	Attempted Forcible Entry	0	2	-100.00%	87	20	335.00%
		Forcible Entry	3	4	-25.00%	214	131	63.36%
		Unlawful Entry - No force	2	1	100.00%	114	93	22.58%
Grand Total			5	7	-28.57%	415	244	70.08%

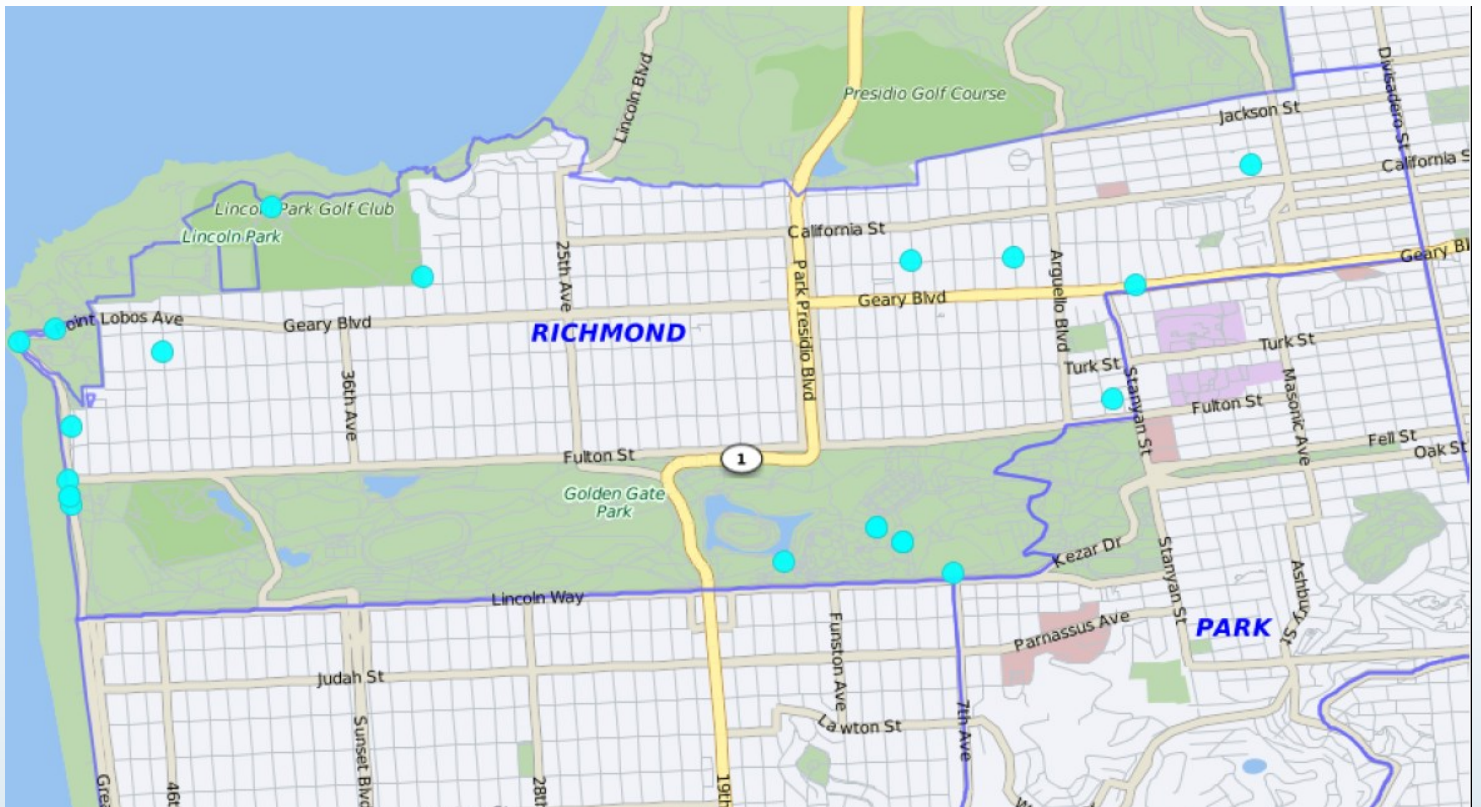


Auto Burglary 7-12-21 to 7-18-21

Weekly COMPSTAT Part 1 Crimes Detail- from 07-12-2021 To 07-18-2021*

RICHMOND

	Crime Category	Crime Subcategory	This Week	Last Week	% Change	2021 YTD	2020 YTD	% Change
PART I	LARCENY THEFT	Auto Burglaries	27	68	-60.29%	1179	1020	15.59%
Grand Total			27	68	-60.29%	1179	1020	15.59%



Robbery 7-12-21 to 7-18-21

Weekly COMPSTAT Part 1 Crimes Detail- from 07-12-2021 To 07-18-2021*

RICHMOND

	Crime Category	Crime Subcategory	This Week	Last Week	% Change	2021 YTD	2020 YTD	% Change
PART I	ROBBERY	Firearm	0	0	0.00%	7	4	75.00%
		Knife or Cutting Instrument	0	0	0.00%	5	5	0.00%
		Other Dangerous Weapon	0	0	0.00%	14	6	133.33%
		Strongarm (no weapon)	0	1	-100.00%	40	34	17.65%
Grand Total			0	1	-100.00%	66	49	34.69%

INCIDENTS IN THE RICHMOND DISTRICT

Firearm Possession, Vehicle Tampering

7/17/21 00:11 AM

700 Block Arguello Ave

Officers responded to a vehicle tampering call. Witnesses gave Officers the description of the Suspect and last known direction of travel. Officers located the Suspect a short distance away. After initially stopping for Officers, the Suspect fled on foot and was apprehended after a brief chase and struggle. The Suspect spontaneously stated he had a fake gun in his bag. Officers located a real loaded firearm in the Suspects possession.

A records check revealed the Suspect was a convicted felon prohibited from possessing firearms. A records check on the firearm produced no result.

The Suspect was arrested and booked at County Jail.



City and County of San Francisco
POLICE DEPARTMENT
MEDIA RELATIONS UNIT
1245 3RD Street, 6TH Floor
San Francisco, California 94158



MEDIA ADVISORY

Recent Press Releases

[San Francisco Police Arrest Armed Robbery Suspect](#)

[San Francisco Police Arrest Homicide Suspect](#)

[Reauthorization of Organized Retail Crime Task Force](#)

For more SFPD news please visit sanfranciscopolice.org/news



City and County of San Francisco
POLICE DEPARTMENT
MEDIA RELATIONS UNIT
1245 3RD Street, 6TH Floor
San Francisco, California 94158



MEDIA ADVISORY

November 17, 2020
037-20

San Francisco Police Release Burglary Awareness Crime Prevention Video

The San Francisco Police Department would like to remind the public to stay safe and help protect yourself from vehicle and home burglaries. Below are some simple steps you can take to help prevent your home or vehicle from being burglarized.

- Do not leave valuables in your vehicle
- Remove garage door opener from your vehicle if parked outside your garage
- Lock the door from your garage leading inside your home
- “Block the cord” – garage door openers have an emergency release cord that, when pulled, disconnects the door from the mechanism thereby making it easy for burglars to enter your garage

For more information on how to protect yourself, your family and your home from burglary please click on the link below and watch our safety video.

The video can be viewed by clicking this link: <https://vimeo.com/477012071>



PREVENT GARAGE DOOR BREAK-INS



Garages can sometimes be the most vulnerable area of the home and they are often the entry point most targeted by thieves because of the easy access to the home. Here are some tips to help secure your garage and protect it from theft.



ALWAYS CLOSE YOUR GARAGE DOOR

This may seem obvious, but just drive through any residential neighborhood and you'll likely see a few wide-open garage doors. This is an invitation to burglars and at the very least, you're allowing passersby to easily view the contents of your garage.



INSTALL MOTION-SENSITIVE LIGHTS

Homes and garages with poor exterior lighting become more appealing targets for burglars. Ensure all entry points are well-lit. Constant lighting supplemented by motion sensitive lighting is best.



REINFORCE THE GLASS ON THE GARAGE DOOR

Add vinyl adhesive to reinforce garage windows. You can also opt for a frosted or translucent glass design to allow sunlight in while obscuring contents inside.



DON'T LEAVE GARAGE DOOR REMOTE IN YOUR CAR

A garage door remote is basically another key into your home and thieves won't hesitate to use it if they find it. Opt to use a remote on a keychain.



INSTALL AN INTERIOR MANUAL GARAGE DOOR LOCK

When leaving on a vacation or for extended periods of time, disconnect automatic door motor and install a manual lock.



TIE EMERGENCY RELEASE CORD

Tying your emergency release cord into a small ball will make it more difficult to reach by thieves who manage to break the garage windows.



INSTALL SURVEILLANCE CAMERAS

There should be at least 1 exterior mounted camera facing the street and registered with the D.A.'s office.



SECURE ANY VALUABLES

Keep all tools in cabinet systems with locks and be sure to hang and lock any bicycles. As much as possible, try to avoid keeping valuable items in the garage or inside vehicles.



HAVE A QUALITY, FUNCTIONING GARAGE DOOR

Garage doors should be as secure, sturdy, and well-built as your front door and should remain in good condition and tight fitting. Deadbolts should also be added to the garage-to-house door.



INSTALL INTERIOR MAIL SLOT HOOD COVER

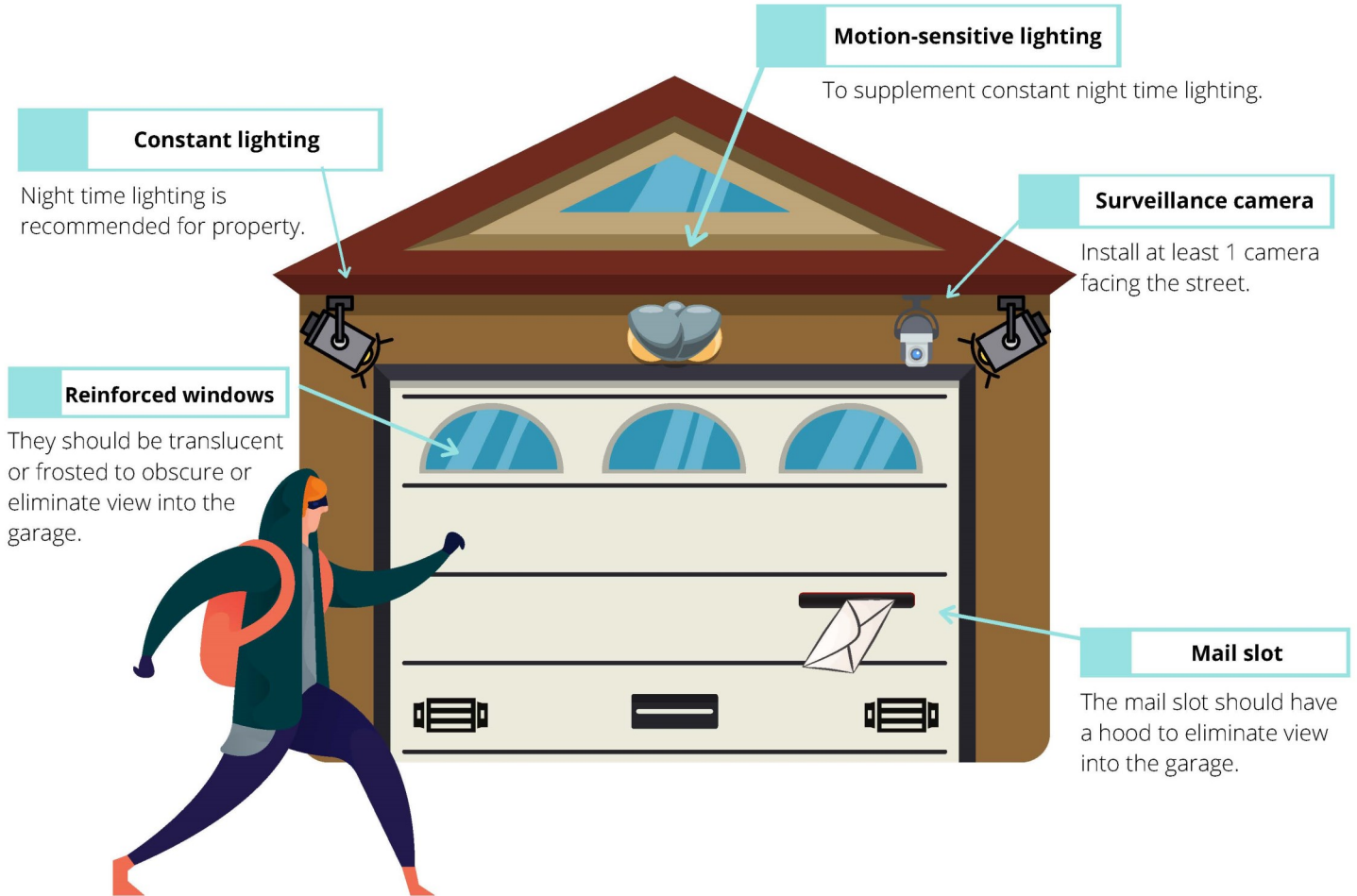
If the garage door is equipped with a mail slot, a hood cover will prevent any view into the garage and its contents, eliminating enticement to enter.

For additional information, please contact SF SAFE at (415) 553-1984 or visit sfsafe.org



PREVENT GARAGE DOOR BREAK-INS

ANATOMY OF A SAFE GARAGE



Your home is only as safe as its weakest entry point.

Your garage is an important part of your home and securing your garage is one of the most essential steps to securing your entire home. It is always recommended to regularly check and update your home's security system and safety measures.

For more information, please contact SF SAFE at (415) 553-1984 or visit sfsafe.org.



PREVENTION

- Are there any valuables or seemingly insignificant loose items visible in your car?
 - Place all loose items in the trunk of your car before you arrive to your destination to ensure thieves won't know what you are hiding.
- Traveling from out of town?
 - Check your luggage at the hotel instead of keeping it in your car.



**BROKEN WINDOW
OR TRUNK**

- Is the break-in happening right now?
 - Call 9-1-1 with your location and suspect description.
- Did the break-in already happen?
 - File a police report on-line (www.sanfranciscopolice.org/reports), or call 3-1-1.



CAR BREAK-IN

- What was stolen? Make a list of stolen items.
 - Although not required, you should provide the estimated value along with serial numbers to any electronics on a police report that can be filed online (www.sanfranciscopolice.org/reports), or call 415-553-0123.
 - If credit cards were stolen, cancel them as soon as possible and check to see if any unauthorized activity has occurred. If so, include this activity on the police report.
 - If an original passport or social security card was stolen, go to the nearest police station.



FIREARMS THEFT

- Was any type of firearm stolen?
 - If so, immediately go to a police station or call the police non-emergency line: 415-553-0123.



REPORTING

- Is a police report needed for an insurance claim?
 - A formal police report can be completed online (www.sanfranciscopolice.org/reports), in person at any San Francisco Police Station, or by calling 3-1-1.



**MAKE THE
RIGHT CALL**

KEEP 9-1-1 AVAILABLE FOR EMERGENCIES

3-1-1

CITY SERVICES & INFORMATION
AVAILABLE 24/7

415-553-0123

POLICE NON-EMERGENCY ASSISTANCE
AVAILABLE 24/7

Park Smart!



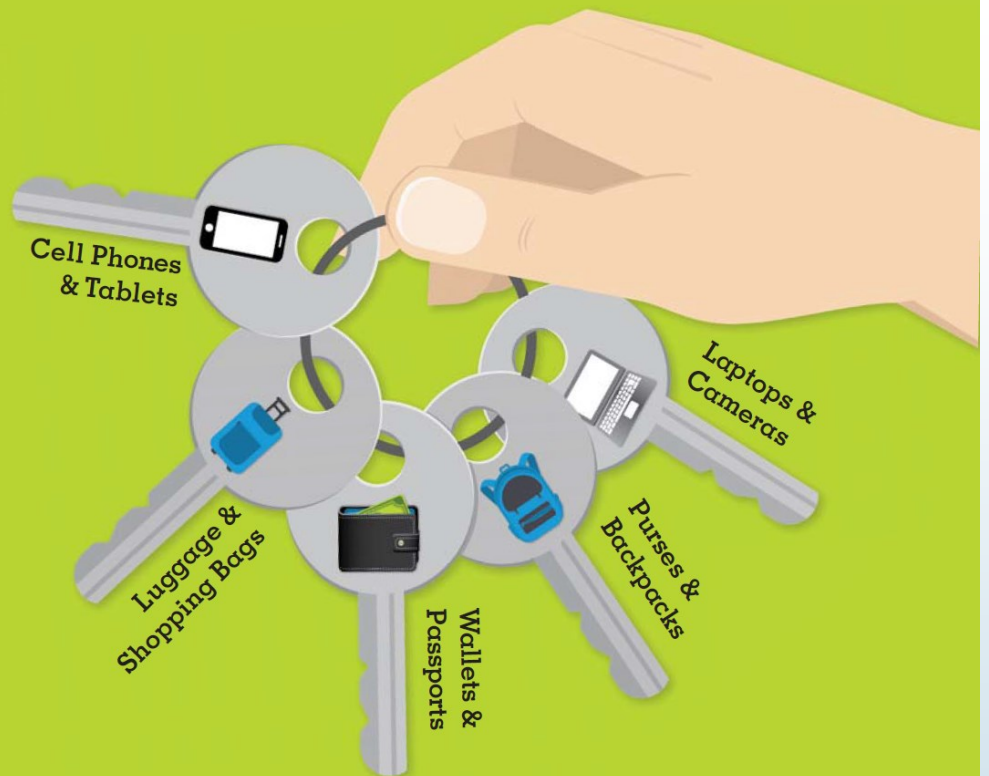
THE KEYS TO
PARKED CAR
SAFETY ARE IN
YOUR HANDS!

If you love it, don't leave it.

DON'T TEMPT A CAR THIEF!

Car thieves only need seconds to break into your car. So Park Smart, and especially keep your trunk clear.

**Take everything
with you.**





Municipal Transportation Agency (MTA)

(415) 554-7410
chanstaff@sfgov.org



SFPD Richmond Station

(415) 666-8000
SFPDRichmondStation@sfgov.org



Whether you live in a single family home, condo, or a large apartment complex in San Francisco, there are a number of ways you can keep your residence safe and secure.

Emergencies

9-1-1



San Francisco SAFE

(415) 553-1984
www.sfsafe.org



Non-Emergency Line

(415) 553-0123



City Attorney's Office

(415) 554-4700
cityattorney@sfcityatty.org



Anonymous Tip Line

(415) 575-4444



www.sfsafe.org | (415) 553-1984

SAN FRANCISCO RESOURCE CARD

Sup. Catherine Stefani
(415) 554-7752
Catherine.Stefani@sfgov.org



Sup. Connie Chan
(415) 554-7410
chanstaff@sfgov.org



Mayor's Office

(415) 554-6141
MayorLondonBreed@sfgov.org



District Attorney's Office

(628) 652-4000
districtattorney@sfgov.org



Police Commission

(415) 837-7070
sfpd.commission@sfgov.org



Department of Public Works

(628) 271-3160
dpw@sfdpw.org



Department of Police Accountability

(415) 241-7711
sfdpa@sfgov.org



Department of Homelessness & Supportive Housing

(628) 652-7700
dhsh@sfgov.org



City Services & Questions

3-1-1



Community Surveys

The San Francisco Police Department is committed to excellence in law enforcement and is dedicated to the people, traditions and diversity of our City. Our mission is to provide service with understanding, response with compassion, performance with integrity and law enforcement with vision.

As part of our ongoing outreach to engage with the community and measure our success, the Department has created a community survey link to obtain valuable community feedback for our community events and programs, which will assist the Department in the development of our strategies to meet the needs of the community. If you have recently attended or participated in an event or program hosted by the Department (such as Coffee with a Cop, National Night Out, ALERT program, Youth Summer program, Community Academy or Town Hall Meeting), and have feedback regarding the event or program you attended, please take some time to fill out our community survey.

The Department has also developed a Foot Beat/Bike Patrol survey to gather valuable community feedback on the effectiveness of the Foot Beat/Bicycle Patrol, as it relates to community policing and crime strategies and an Implicit Bias survey to measure progress in the Department's commitment to impartial policing and procedural justice. Please take the time to fill out the Foot Beat/Bicycle and Implicit Bias surveys. If you have already filled out a survey, thank you! Your response will help SFPD better serve our City and continue to support our community through Safety with Respect.

[Foot & Bike Patrol Survey](#)

[Implicit Bias Survey](#)



Richmond Station Vision and Values

Richmond Station supports the Department's Community Policing Vision and Values and is committed to creating a safe, healthy and vibrant community.

Our spirit is guided by a guardian mindset, and we recognize that our role as protectors is rooted in empathy, understanding, and mutual respect.

CONTACT NUMBERS FOR THE RICHMOND DISTRICT

RESOURCE	CONTACT	TELEPHONE
EMERGENCY		911
NON-EMERGENCY		415-553-0123
RICHMOND STATION		415-666-8000
RICHMOND STATION ANONYMOUS TIP LINE		415-668-7387
RICHMOND STATION EMAIL	sfpdrichmondstation@sfgov.org	
SPECIAL EVENTS SERGEANT	SERGEANT L. CUEBA	415-666-8012
RICHMOND STATION PERMITS & EVENTS	OFFICER J. BRYANT	415-666-8023
RICHMOND STATION COMMUNITY LIAISON OFFICER	OFFICER H. HARPER	415-666-8028
RICHMOND STATION GEARY BLVD FOOT BEAT OFFICERS	OFFICER M.HILL	415-813-0028
	OFFICER K. IVANOV	415-726-1787
RICHMOND STATION CLEMENT ST FOOT BEAT OFFICER	OFFICER G. LEE	415-660-8593
RICHMOND STATION SACRAMENTO ST FOOT BEAT OFFICERS	OFFICER P.MCNICHOL	415-696-0514
	OFFICER M. CANNING	415-696-0395
RICHMOND STATION HOMELESS OUTREACH OFFICERS	OFFICER M. HODGE	415-852-0020
	OFFICER D. WRIGHT	415-535-0871
	OFFICER M. ROSS	415-696-0459
	OFFICER T. BARTLEY	415-696-0590
DEPT. OF PUBLIC WORKS	TTY: 415-701-2323	311
DEPT. OF PARKING & TRAFFIC / SFMTA	TTY: 415-701-2323	311
S.A.F.E.		415-553-1984
HOMICIDE TIP LINE		415-431-2127
HUMAN TRAFFICKING TIP LINE		415-643-6233
NARCOTICS TIP LINE		1-800-CRACK-IT
SFPD MEDIA RELATIONS		415-837-7395
SFPD COMMUNITY RELATIONS		415-837-7245



YOU CAN CALL 311 TO CONTACT THE DEPT. OF PUBLIC WORKS AND THE DEPT. OF PARKING AND TRAFFIC / SFMTA. YOU CAN ALSO REPORT/REQUEST:

- STREET OR SIDEWALK CLEANING
- GRAFFITI
- STREETLIGHT REPAIR
- ILLEGAL POSTINGS
- ABANDONED VEHICLES
- AND MUCH MORE... CHECK OUT THEIR WEBSITE AT SF311.ORG.