

# Bayview Station Newsletter

ISSUE 30 - OCTOBER 7TH, 2019 THRU OCTOBER 13TH, 2019



### IN THIS ISSUE:

Weekly Stats.....	1
Captains Message.....	2
Resources.....	3
Officer of the Month.....	4
Community Member of the Month..	5
Safety Tips.....	6
Be Prepared.....	7
Incidents of Interest.....	8
Crime Maps.....	9
Crime Definition.....	10
Definition of Suspicious Activity....	11
Recruitment.....	12
In the Community.....	13-20
Crime Prevention.....	21-27



Captain Troy Dangerfield

### WEEKLY STATS: Oct 7 thru Oct 13

<b>629</b>	Calls for Service
<b>160</b>	Incident Reports
<b>17</b>	Felony Arrests
<b>9</b>	Misdemeanor Arrests
<b>1</b>	Firearm(s) Seized
<b>8</b>	Robberies
<b>7</b>	Residential Burglaries
<b>5</b>	Commercial Burglaries
<b>8</b>	Auto Burglaries

[File a Report Online](#)

[\(Click Here\)](#)



Bayview Station holds community meetings on the first Tuesday of each month.

### NEXT COMMUNITY MEETING

**Tuesday, November 5,  
2019 at 6:00 PM**

**Bayview Station Community Room**

San Francisco Police District Station  
**#CommunityMeeting**

- Community Concerns
- District Crimes and Updates
- Upcoming Community Events
- Response to Community Questions and Concerns

sanfranciscopolice.org/stations



# Captain's Message

Hello Community,

In the month of October some of the officers at Bayview Station are wearing Pink Patches on their uniforms. The men and women of the San Francisco Police Department are joining law enforcement agencies around the country to raise awareness and funds for Breast Cancer research and treatment.



Please feel free to email me at [troy.dangerfield@sfgov.org](mailto:troy.dangerfield@sfgov.org) with any further concerns, questions or comments.

Sincerely,

Captain Troy Dangerfield #250



[@SFPDBayview](https://twitter.com/SFPDBayview)

# Resources

## DIRECTORY

### EMERGENCY: 911

**Note:** When calling 911 on a cellular phone near a highway, the call is connected to The California Highway Patrol (CHP) dispatch center. In other areas in San Francisco, the call will connect directly to SF dispatch. You can also dial directly to SF dispatch: **415-553-8090**

Non-Emergency:	<b>415-553-0123</b>
Bayview Station:	<b>415-671-2300</b>
SFPD Anonymous Tip Line (live person, 24 hrs):	<b>415-575-4444</b>
Graffiti Abatement:	<b>415-278-9454</b>
SF SAFE:	<b>415-553-1984</b>

### Bayview Station Resource

Events/ Community Liaison, Ofc. Ramirez:	<b>415-671-2313</b>
Permits/ Code Abatement, Ofc. Ramirez:	<b>415-671-2313</b>
Subpoenas/ Newsletter, Ofc Hildebrand:	<b>415-671-2358</b>
Homeless Liaison, Ofc. Green:	<b>415-696-0562</b>
Abandoned Auto, Ofc. Mustafich: (M-F, 7am-3pm)	<b>415-671-2330</b>
Deputy City Attorney, Nicholas Colla:	<b>415-554-3875</b>



### The SFPD wants to hear from YOU, our key stakeholders

We are committed to excellence in law enforcement and are dedicated to the people, traditions and diversity of our City. Our mission is to provide service with understanding, response with compassion, performance with integrity and law enforcement with vision.

We welcome your comments. Let us know how we're doing, what we could be doing better and your thoughts on how your police department can work more closely with the community it proudly serves.

Your feedback will help SFPD better serve our City. Your comments will be reviewed by our Community Engagement Unit and forwarded to the relevant unit, department office or neighborhood station for review and follow up, if appropriate.

You may also visit [sanfranciscopolice.org/police-commendation-complaint](http://sanfranciscopolice.org/police-commendation-complaint) for more information on providing input on SFPD policies and practices.)



With over 2,300 different telephone numbers listed to access local government services, many people did not know what number to dial to reach the appropriate department. Now you can connect to city services with only two numbers to remember: **911** for emergencies and **3-1-1** for everything else.

Before 311, over 50% of calls to the 911 center were not emergency related. **311** relieves 911 operators from these non-emergency calls. If a catastrophic emergency such as an earthquake occurs, **311** operators will be able to provide accurate information to assist during the recovery. In the unlikely event the 911 facilities become inoperative, the **311** call center will function as a back-up.

### Dispose of Unwanted and Expired Medication at Bayview Station

There is a new secured bin at Bayview Station where you can dispose of unwanted and expired medication at any time of the day or night.

**The bin will accept any type of prescription and off the shelf medication except for:**

- Herbal Remedies**
- Vitamins**
- Supplements**
- Cosmetics**
- Other personal care products**
- Compressed Cylinders**
- Aerosols**
- Inhalers**
- Medical Devices**
- Sharps**
- Illicit drugs**
- Iodine containing medication.**



When disposing the medication, please leave it in the original container with your personal information crossed out or removed. You can also place the medication into a clear plastic zip top baggies. Contact the front desk officer and inform them that you want your medication disposed of. The officer will assist you.

Please note that once an item that had been disposed of inside the bin, we cannot retrieve it. So make sure your ring, cell phone or anything of value is not accidentally disposed of.



# Officer of the Month October 2019



**Officer Halligan**

Officer Halligan grew up in Bay Area and started his law enforcement career with the Sonoma County Sheriff's Office. He worked as a Correctional Deputy there for approximately three years. Officer Halligan joined SFPD in 2016. He trained at Southern station and completed probation at Tenderloin Station. His permanent assignment was at Central station. Officer Halligan requested to be transferred to Bayview Station last year. When you see him out and about, say hello and don't be shy when it comes to striking up a conversation.

# Community Member of the Month October 2019

We are honoring Barbara Gratta as the Community Member of the month for her leadership role as a board member for EDOT and Co-Chair of The Merchants of Butchertown.



**Barbara Gratta**

Barbara Gratta is a Bayview resident for over 20 years. She is the owner and winemaker of Gratta Wines with a tasting room at 5273 3RD and an active member of the community. She sits on the Board for EDOT (Economic Development on Third) and co-chairs The Merchants of Butchertown, a merchant group focused on business activation, events and collaborations between other businesses. The Annual Butchertown Jazz Festival is the premier example of the group's collective efforts.

# Safety Tips

## STAYING SAFE ON HALLOWEEN

San Franciscans have been celebrating Halloween for more than 200 years. We here at the San Francisco Police Department want to make sure you and yours enjoy this fun holiday as safely as possible, which is why we offer you this list of trick-or-treating tips:

### Watch out for your kids:

- Keep children off the streets after dark.
- Never let your kids go out with realistic replicas of firearms.
- Do not let them go trick-or-treating alone, or without an accompanying adult.
- If they do go out after dark, make sure they wear reflective clothing and carry a flashlight.
- Give your children a curfew and have them tell you what route they will be taking.
- Closely inspect any treats before anyone eats them. Cut up and wash fruit to make sure it is safe to consume.
- All costumes should be made of light-colored, fireproof material.
- Make sure masks and wigs are fireproof and do not impair vision.

### Remind your kids:

- Never enter a stranger's home.
- Never accept rides from strangers.
- Stay on the sidewalks, not the streets, and avoid backyards, shortcuts and alleys.
- Stick with your friends.

### Take extra care on Halloween night:

- Don't leave your home unattended.
- Keep pets inside your home or another safe place.
- Motorists should drive slowly, yield to young pedestrians and watch out for trick-or-treaters darting into the street.

If you suspect that candy may be tainted, please bring it to any of SFPD's [ten district police stations](#) for disposal.

# Be Prepared



## BE PREPARED FOR AN EARTHQUAKE

**Earthquakes can collapse buildings and cause heavy items to fall, resulting in injuries and property damage.**



**FEMA**  
FEMA V-1003/May 2018

Earthquakes are the sudden, rapid shaking of the earth, caused by the breaking and shifting of underground rock.



Can happen anywhere. Higher risk areas are California, Alaska, and the Mississippi Valley



Give no warning



Cause fires and damage roads



Cause tsunamis, landslides, and avalanches

## IF AN EARTHQUAKE HAPPENS, PROTECT YOURSELF RIGHT AWAY



If in a vehicle, pull over and stop.



If in bed, stay there.



If outdoors, stay outdoors.



Do not get in a doorway.



Do not run outside.

# Incidents of Interest

**This newsletter is not intended to be a complete report of all police activity in the Bayview District.**

**For a detailed list of all criminal activity in your area, please visit**

**[www.crimemapping.com](http://www.crimemapping.com)**

## Robbery

October 7th, 2019 - 12:09 pm- [Barnevald Ave. and Newcomb Ave.](#) (SFPD 190753123)  
Officers responded to a robbery call. The victim was robbed at gunpoint and pistol whipped. No arrest has been made in this incident.

## Shooting

October 8th, 2019 - 1:04 am- [Unit block of Harbor road.](#) (SFPD 190756014)  
Officers responded to the address for a ShotSpotter call. The suspect fired 1 shot at the victim's car. The victim was not injured. No arrest has been made in this incident.

## Robbery

October 8th, 2019 - 5:55 pm- [2400 Block of San Bruno Ave.](#) (SFPD 190758139)  
Officers responded to the location for a robbery call. The victim was on her phone when the suspect grabbed her phone. The victim was dragged as she held onto her phone. The suspect fled with the phone. No arrest has been made in this incident.

## Shooting

October 11th, 2019 - 12:21 am- [900 Block of Connecticut St.](#) (SFPD 190765184)  
Officers responded to the address for a shooting call. The victim stated that she heard a gunshot and her bedroom window shattered. The victim was not injured. No arrest has been made in this incident.

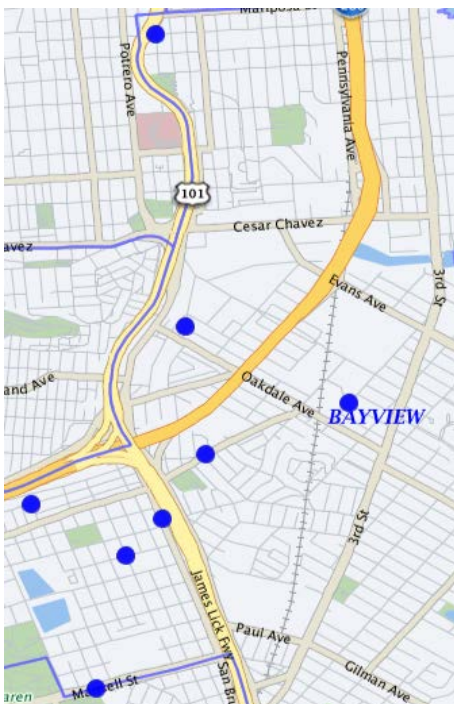
## Shooting

October 13th, 2019-2:00 am - [2100 Block of Palou Ave.](#) (SFPD 190770876)  
Officers responded to the hospital to interview a shooting victim. The victim stated that he was shot by an unknown suspect. No arrest has been made in this incident.

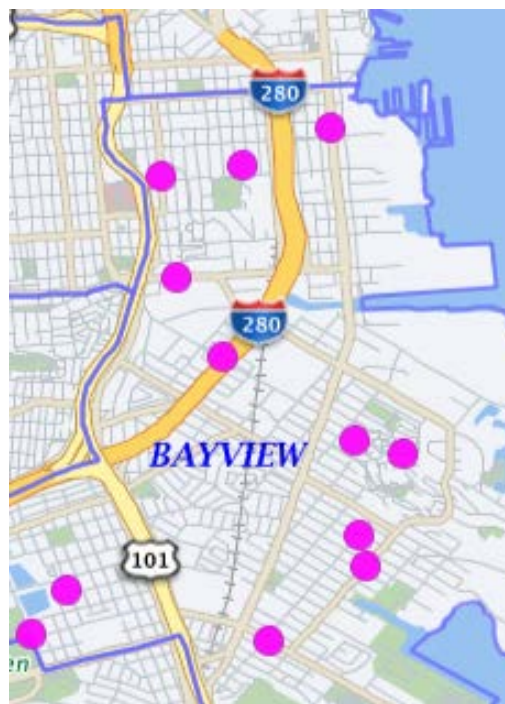


# Crime Maps

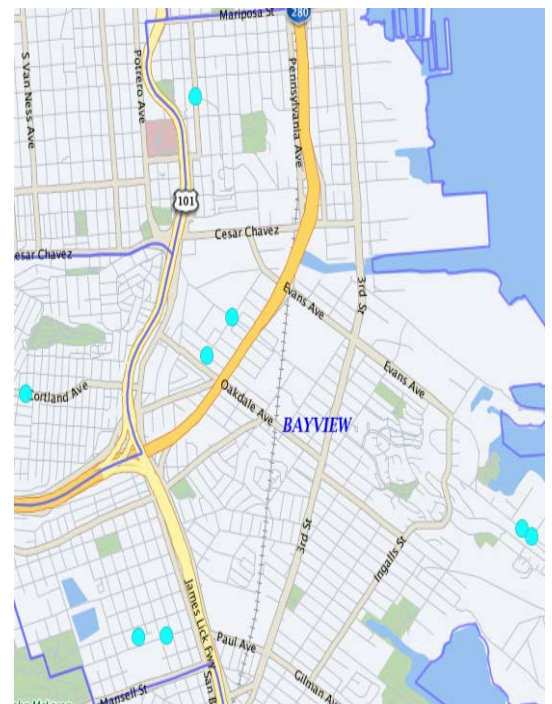
Crime maps for the week of 10/07/2019 to 10/13/2019



Robberies - 8



Burglaries - 12



Auto Boost - 8

# Crime Definition

**Robbery** – Robbery is the taking of property from another by using force or by using fear.

**Assault** – An assault is an unlawful attempt, coupled with the present ability, to commit a violent injury on another person.

**Battery** - (Misdemeanor battery) is any willful and unlawful touching of another.

(Felony battery) is the use of force or violence upon the person of another that causes serious bodily injury.

\*Assault is when a person swings their arm and battery is when that arm makes contact with another person.

**Aggravated Assault** – Assault upon another person with a deadly weapon or instrument other than a firearm or by any means of force likely to produce great bodily injury.

**Burglary** – The intent upon entry into a property to commit grand theft, petty theft, or any felony.

**Grand Theft** – Grand theft is theft committed when the value of the money, labor, or property taken exceeds \$950.

**Petty Theft** – Theft where the value of the property taken is less than \$950.



# Definition of Suspicious Activity

**Suspicious activity** is any observed behavior that could indicate a crime-related incident has been committed, or about to be committed. Unusual items or situations: A vehicle is parked in an odd location, a package/luggage is unattended, a window/door is open that is usually closed, or other out-of-the-ordinary situations occur.

Examples of Suspicious Activity:

- An individual peering into vehicles, to try, and locate any valuables left unattended.
- An individual trying door handles to vehicles, and/or residences to gain access to the vehicle and/ or residence.
- An individual checking front doors of residences to locate any unattended packages or individuals following delivery trucks to see where the truck is dropping off packages.



**See something.  
Say something.**

# Recruitment

## NOW'S THE TIME

## JOIN THE SFPD

GO TO [SFPDCAREERS.COM](http://SFPDCAREERS.COM)



## Join the SFPD – and be part of San Francisco's finest!

San Francisco is a world-class city with a world-class police force. From Fisherman's Wharf to Golden Gate Park and from Nob Hill to the Tenderloin, whether we're on foot patrol, horseback, or in squad cars, investigating felonies, responding to emergencies or leading classes on public safety, we're working with you to help keep our community safe.

*"The San Francisco Police Department offers qualified men and women the opportunity to make a positive difference in our citizens' daily lives. I encourage you to apply today to see how you can become one of San Francisco's finest."*

– Chief William Scott

## Applying is easy!

We are accepting Entry Level (Q-2) Police Officer applications. To apply please follow the 2-step process:

- Apply with the City and County of San Francisco at [www.jobaps.com/sf](http://www.jobaps.com/sf) (Entry Level (Q-2) Police Officer)
- Go to [www.nationaltestingnetwork.com](http://www.nationaltestingnetwork.com), choose law enforcement and register to take the San Francisco Police Department's Written Examination\*.

\*As part of this process, you will need to establish an account with NTN. A fee is required to take the written examination. Candidates with demonstrated financial hardship may submit a request to have the fee waived prior to test registration. See "Candidate FAQ #27" on the NTN website (<https://nationaltestingnetwork.com/publicsafetyjobs/faqs.cfm>) to learn more on how to apply for a fee waiver.

## Have Questions? Contact the San Francisco Police Department Recruitment Unit

1245 3<sup>rd</sup> Street, 5<sup>th</sup> Floor, San Francisco, CA  
94158 Phone: 415-837-7270  
Fax: 415-575-6095

 [joinsfpd@sfgov.org](mailto:joinsfpd@sfgov.org)

   @SFPDRecruitment







# READ-ALOUD

## WITH

# SFPD

Join us at Bayview / Linda Brooks-Burton Branch Library  
 on the second Wednesday of every month  
 for a special read-aloud with SFPD Bayview Station

**WHEN: Oct. 9, Nov. 13, Dec. 11, 2019 | 11 - 11:30 am**

**WHERE: 5075 3rd Street (corner of Revere)**



For more information,  
 call 415-355-5757



*San Francisco Public Library*









CELEBRATE A NEW BEGINNING AT

# SHOREVIEW PARK

GROUNDBREAKING CEREMONY & COMMUNITY DAY | OCTOBER 16 | 4-6 PM

1 Lillian Court at Rosie Lee Lane

SAN FRANCISCO  
RECREATION  
& PARKS  
sfrecpark.org

Celebrate the start of this highly anticipated park improvement project, which will include a new playground, picnic area, landscaping, lighting and pathways. This project is funded by a HUD Community Development Block Grant (CDBG), the California Natural Resources Agency and the SF Recreation and Park Commission.

**Kids Activities | Refreshments | Speaking Program at 4:30 p.m.**



ON FRIDAY, OCTOBER 25TH  
JOIN US FROM 2PM TO 6PM  
AT MENDELL PLAZA FOR A

# POP - UP PUMPKIN PATCH

- ★ FREE PETTING ZOO
- ★ LIVE MUSIC FROM ANDREA BAKER CONSULTING
- ★ FREE ARTS + CRAFTS
- ★ FREE FACE PAINTING
- ★ COSTUME PARADE AT 4:00PM



#MENDELLPLAZA [SFPARKSALLIANCE.ORG/MENDELL](http://SFPARKSALLIANCE.ORG/MENDELL)

The Citywide Public Space Initiative is a new pilot program that supplements the City's critical cleaning and safety services with regular activation, beautification projects and community engagement. This program launched by the City of San Francisco, through the Office of Economic and Workforce Development and the San Francisco Parks Alliance selected Mendell Plaza as a pilot site. For info on how to get involved please visit us at [sfparksalliance.org/mendell](http://sfparksalliance.org/mendell) or e-mail [cpst@sfparksalliance.org](mailto:cpst@sfparksalliance.org)



BAYVIEW BRANCH LIBRARY  
PRESENTS



# HALLOWEEN PARTY

10/27/19 • BAYVIEW BRANCH LIBRARY • 2 – 4 PM

BAYVIEW BRANCH LIBRARY IS HOSTING A FUN HALLOWEEN PARTY! ENJOY CRAFTS, GAMES, TREATS, AND FACE PAINTING. COSTUMES ARE ENCOURAGED (THERE MIGHT BE PRIZES...)! THIS PROGRAM IS FOR CHILDREN AND TEENS.

FOR MORE INFORMATION PLEASE CALL 415-355-5757.



# Dogpatch Neighborhood Meet and Greet with Bayview Station's Captain Dangerfield #250

October 30<sup>th</sup>, 2019  
10:00am – 11:00am

DogPatch Wine Works  
2455 3<sup>rd</sup> St. San Francisco



# StreetScapes Services

Recology CleanScapes SF provides San Francisco businesses with 24/7 maintenance services. We're equipped to wash, scrub, sweep, and/or haul away any unexpected things the urban environment may leave at your doorstep.

**Contact CleanScapes SF at 415-348-9700 or [streetscapes@recology.com](mailto:streetscapes@recology.com).**



## Daily StreetScapes Maintenance

Ensure your property is open for business with exterior maintenance services available seven days a week. Services include litter, debris and graffiti removal, pressure washing and sweeping, and wipe-downs of exterior surfaces, plus free on-call services for emergencies. Rates based on specific property requirements.



## On-Call Clean-Up

Recology CleanScapes is there for you 24/7. We're equipped to wash, scrub, sweep, or haul away any unexpected things the urban environment may leave at your doorstep.



## Graffiti Removal

From color match to difficult masonry surfaces, Recology CleanScapes' expertly trained crews can swiftly remove most graffiti. We have extensive experience with historic brick and masonry and always seek the most environmentally sustainable solution for each situation. Recology CleanScapes removal efforts often commence within 24 – 48 hours to help prevent further vandalism to properties and structures.



## Crime Prevention

# NEIGHBORHOOD WATCH

Active SAFE Program in Force

Neighbors are looking out for one another

---

SUSPICIOUS ACTIVITIES  
REPORTED TO POLICE

---

9-1-1

Emergency

(415) 553-0123

Non-Emergency



For more information contact San Francisco SAFE

(415) 553-1984

[www.sfsafe.org](http://www.sfsafe.org)



# Personal Safety Guide

SAFE wants you to feel secure as you move through your life in and around the City. Use the tips inside to keep safety in your thoughts. Then share your knowledge with your friends and family.

## Safety for All Situations

- Always be alert and aware of your surroundings.
- Trust your intuition! If something feels weird, trust your gut and change the situation.
- Keep valuables and electronics out of sight.
- Safety in numbers—walk with others, on populated streets.
- Know your resources. Use this guide to get started.



Empowering Communities to  
Create a Safer San Francisco

[www.sfsafe.org](http://www.sfsafe.org)





1

Walking

- Walk with purpose
- Keep your purse or bag close to your body
- Hide valuables
- Always stay aware of your surroundings
- Take care using cell phones in public, they are commonly targeted by thieves

2

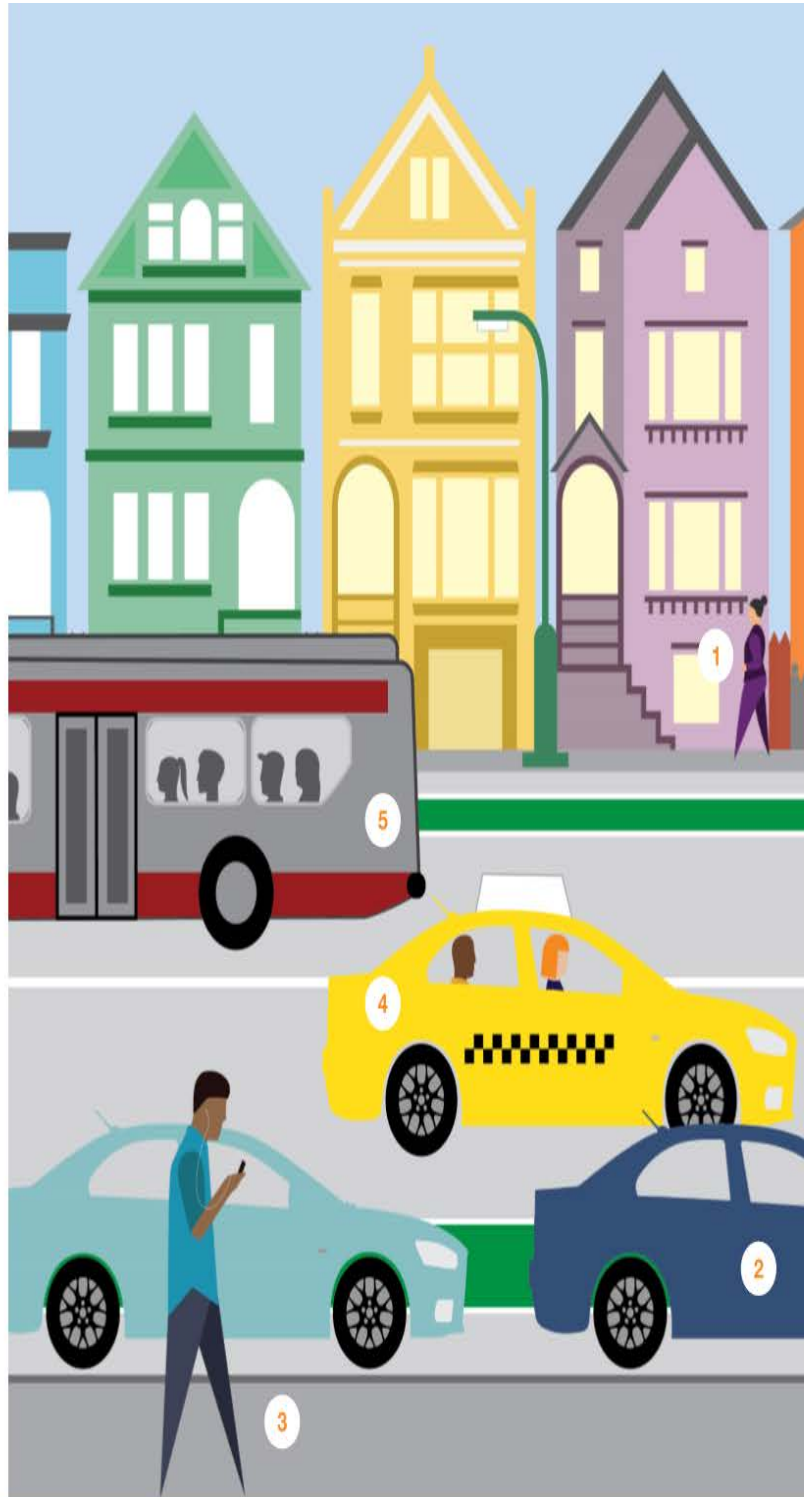
Parking

- Don't leave packages or bags visible in a parked car
- Put packages in the trunk before you arrive at your destination
- Check signage to make sure your car is parked legally
- Avoid large bushes and dense shrubbery

3

Social Media

- Limit location sharing
- Tighten privacy settings
- Be cautious of "friending" strangers
- Don't share details like address, vacation dates, DOB with people you just met
- What goes online will stay online, so be cautious what you share



4

Taxi and Ridesharing

- Confirm "San Francisco Taxicab" seal
- Check for taxi medallion on the dashboard, note ID number
- Confirm driver identity
- Choose the back seat
- Cash is never required in a rideshare
- Report incidents to SFPD
- Taxi complaints: call 311

5

Public Transportation

- Plan your route ahead of time using [www.511.org](http://www.511.org) or [www.sfmta.org](http://www.sfmta.org)
- Find arrival times using Nextbus.com
- Have money or Clipper card ready
- Stay awake and alert
- Hold bags in your lap or under your arm
- Thieves may "snatch and grab" by a door when you approach a stop
- Report any incidents to the driver
- After 6:30 pm, Muni bus drivers can make "safe in between stops"—ask your driver



For bike safety and other topics, visit [www.sfsafe.org](http://www.sfsafe.org)

Stay alert

Safety in numbers

Trust your intuition

Know your resources



Sponsored in cooperation with the San Francisco Police Department



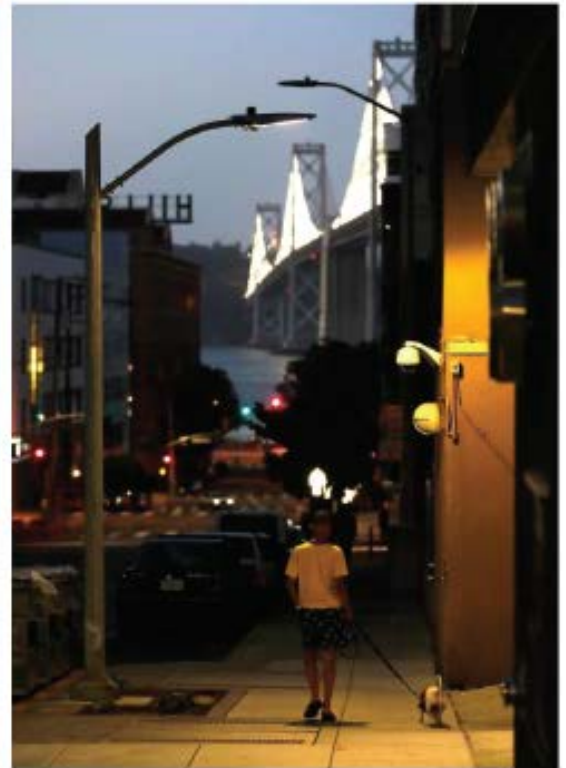
850 Bryant Street, Room 135  
San Francisco, CA 94103  
415-553-1984 | [info@sfsafe.org](mailto:info@sfsafe.org)

# Do You Want a Brighter Block?

The **Fix-It Team** wants to help **illuminate** your neighborhood! We are distributing **free motion-sensor solar LED lighting** for property owners to install on their homes to enhance sidewalk visibility.

Property owners must sign a waiver form to participate; priority is given to properties within existing Fix-It neighborhoods, which you can see here: [sfmayor.org/fix-it-team](http://sfmayor.org/fix-it-team)

\*other rules apply



# San FranciscoGL

Contact [fixitteam@sfgov.org](mailto:fixitteam@sfgov.org) for more information.





# Park Smart!



## THE KEYS TO PARKED CAR SAFETY ARE IN YOUR HANDS!

If you love it, don't leave it.

### DON'T TEMPT A CAR THIEF!

Car thieves only need seconds to break into your car. So Park Smart, and especially keep your trunk clear.

**Take everything with you.**



# BE AWARE OF **BLESSING SCAMS**

**Be aware of strangers.**

**Do not easily believe in what strangers say.**

**Keep a distance from strangers.**

**Do not follow strangers anywhere.**

**Do not let strangers touch you.**

**Do not withdraw money at banks with strangers.**

**Do not bring strangers home.**

**Be aware if strangers ask for money.**

**Before withdrawing large sums of money/valuables,  
discuss with your family first.**

**If you are in doubt, stay calm and call 9-1-1 immediately!**

For language assistance, state the language you speak such as  
"Cantonese" or "Mandarin"



**Blessing Scam Chinese Hotline: (415) 553-9212  
(Voice Mail Only)**





# FAMILY PLACES

Families with minor children who are experiencing homelessness should visit a Family Access Point to get assistance with, shelter, housing, referrals and general problem-solving.

### FAMILY ACCESS POINTS

**Central City Access Point**  
37 Grove Street  
415.644.0504  
Monday, Thursday and Friday, 9a-5p  
Tuesday, 9a-1p and 3p-5p  
Wednesday, 9a-7p

**Bayview Access Point\***  
1641 LaSalle Avenue  
415.430.6320  
Monday, 8a-7p  
Tuesday-Friday, 8:30a-5p

**Mission Access Point\***  
3270 18th Street  
415.972.1281  
Monday-Thursday, 8:30a-5p  
Friday, 8:30a-7p

\*Mobile team available to meet a family anywhere in San Francisco

### IMMEDIATE SHELTER

If you require immediate shelter, call First Friendship to make a reservation at 415.642.0221 between 12p and 2p, Monday through Friday. You can also go directly to First Friendship (501 Steiner Street) between 3p and 8p.

Families are:

- not required to go to an Access Point in order to seek shelter at First Friendship
- not turned away from First Friendship
- are provided mats in a church
- provided breakfast and dinner; no showers on site
- provided transportation to A Woman's Place Drop-in Center; showers available on-site



### HOMELESS OUTREACH TEAM

Please contact the Homeless Outreach Team if you or a family you know is unsheltered and/or living in a vehicle. Please leave a message at 415.355.7580.



### HOMEWARD BOUND

To reunite with friends and family outside of San Francisco, please contact Homeward Bound at:

1235 Mission Street, 415.558.1217  
Monday-Friday, 8:30a-12p & 1:30p-4p  
Tuesdays, 8:30a-11:30a & 2p-4p

## 24 hour HSOC Resources

### PSYCH EMERGENCY SERVICES

1001 Potrero Ave, Bldg 5, 1B20  
(628) 206-8125

Individuals in need of psychiatric crisis stabilization. Assessment, evaluation services, and initial treatment, are available if appropriate.

### DORE URGENT CARE

52 Dore St • (415) 553-3100

Individuals who are in psychiatric crisis, but who do not require hospitalization, involuntary treatment, seclusion, or restraint.

Call ahead to notify the clinic of intended referral and if transportation is needed.

### COMPREHENSIVE MOBILE CRISIS

(415) 970-3800 or 4000

Early intervention before situation escalates to critical crisis point.

### SOBERING CENTER

1185 Mission St • (415) 734-4227

Drop-off point for individuals with chronic alcoholism in need of stabilization services.

SFPD may drop off people directly. Contact the number below, in advance, or enroute.

### A WOMAN'S PLACE

211 13th Street • (415) 293-7360

24 hour drop-off services only for women, children, and fathers accompanied by women with children.

A Woman's Place does NOT make shelter reservations.

### MULTI SERVICE CENTER-SOUTH

525 5th St • (415) 597-7960

A shelter offering a range of services and assistance programs for people experiencing homelessness.