

SOUTHERN STATION NEWSLETTER



San Francisco
Police Department



May 2019

Captain Ed Del Carlo's Message

Greetings Southern District Members,

As we enter the summer months officers assigned to Southern Station will focus on responding to violent crime, traffic safety, and quality of life issues. We will maintain a visible presence on the Sixth Street corridor as well as Mission Street. The Chase Center will be up and running in August and we will have our usual street fairs and Sunday Streets events.

In closing I will be retiring from the police department after serving the City for thirty one years. As a fourth generation San Franciscan who was born and raised in the City, it has been an honor to be a police officer in the best city in the world. I would like to thank the men and women of Southern Station who go out every day and deal with incredible challenges. They do a fantastic job. Thank you to the Southern Police District community. It has been fantastic working with you over the past seven months.

The district will be in good hands. Captain Laura Knight will be taking over. She has worked in this district several times during her twenty eight year career with the department.

Thank You...



Captain Ed Del Carlo
Commanding Officer

Next Community Meeting:

Location and time TBD

Chief William Scott's message

<http://sanfranciscopolice.org/chief-police>

Inside this issue:

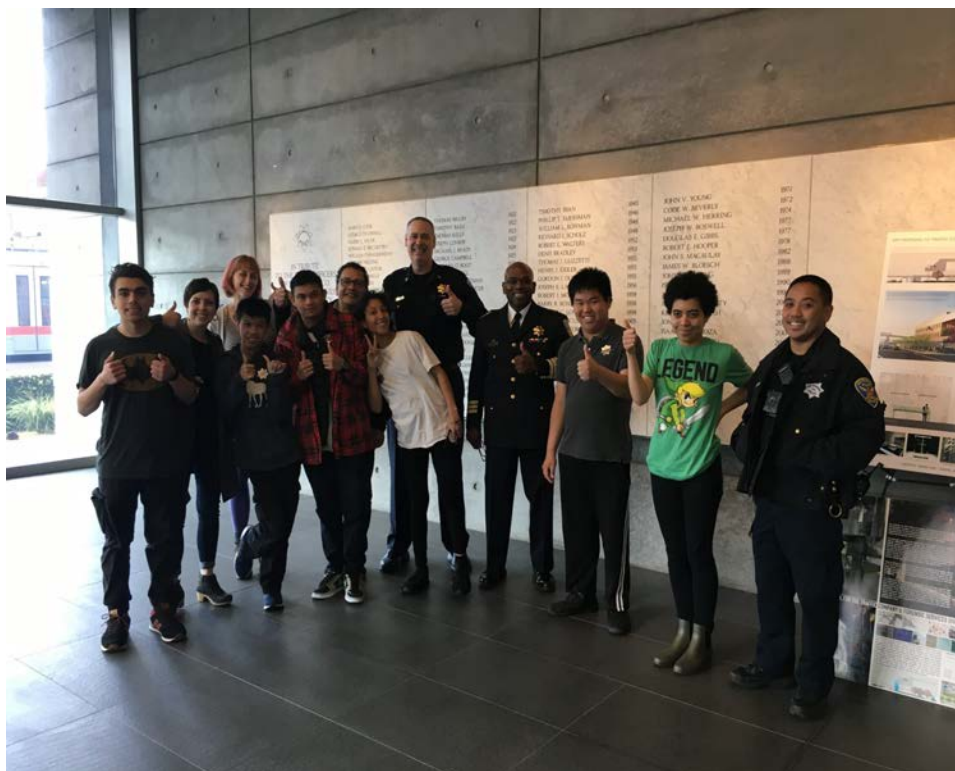
Captain's Message	1
Officer of the month	2
Definition of Suspicious Activity	3
Crime Definitions	4
Definition of Community Policing	5
Crime Numbers / Maps	6-12
Focus on the Five	13
Camera Registration	14
Park Smart	15
Flag Football	16
Feedback	17
Job Opportunities	18
Contacts	19

Thank you for
subscribing to our
Newsletter!

Please follow us on
Twitter @SFPDSouthern

SOUTHERN STATION'S OFFICER OF THE MONTH FOR MAY 2019

CAPTAIN ED DEL CARLO



After 30 years of service, we would like to announce the retirement of Captain Ed Del Carlo.

Captain Del Carlo started his career with the SFPD when he graduated from the 166 police academy in 1990.

Captain Del Carlo worked patrol at Ingleside station for 5 years. He was promoted to sergeant in 1996 after which he served at Potrero Station. In 1999 he was promoted to Inspector and served in Vice for 9 years and later the Mid-Market foot beat.

In 2010 Captain Del Carlo was promoted to Lieutenant and was assigned to MUNI, the academy, Central Station and the San Francisco Unified School District.

In 2018 he was promoted to the rank of Captain and was assigned to command Southern Station.

On behalf of the SFPD and your family at Southern Station we would like to wish "Big Ed" Del Carlo a happy and well deserved retirement. THANK YOU! CAPTAIN DEL CARLO!!!

Definition of Suspicious Activity

Suspicious activity is any observed behavior that could indicate a crime-related incident has been committed, or about to be committed. Unusual items or situations: A vehicle is parked in an odd location, a package/luggage is unattended, a window/door is open that is usually closed, or other out-of-the-ordinary situations occur.

Examples of Suspicious Activity:

- ◆ An individual peering into vehicles, to try, and locate any valuables left unattended.
- ◆ An individual trying door handles to vehicles, and/or residences to gain access to the vehicle and/ or residence.
- ◆ An individual checking front doors of residences to locate any unattended packages, or individuals following delivery trucks to see where the truck is dropping off packages.



**See something.
Say something.**

Crime Definition

Robbery – Robbery is the taking of property from another by using force or by using fear.

Assault – An assault is an unlawful attempt, coupled with the present ability, to commit a violent injury on another person.

Battery - (Misdemeanor battery) is any willful and unlawful touching of another.

(Felony battery) is the use of force or violence upon the person of another that causes serious bodily injury.

***Assault** is when a person swings their arm and **battery** is when that arm makes contact with another person.

Aggravated Assault – Assault upon another person with a deadly weapon or instrument other than a firearm or by any means of force likely to produce great bodily injury.

Burglary – The intent upon entry into a property to commit grand theft, petty theft, or any felony.

Grand Theft – Grand theft is theft committed when the value of the money, labor, or property taken exceeds \$950.

Petty Theft – Theft where the value of the property taken is less than \$950.

Definition of Community Policing

Community policing, or community-oriented policing, is a strategy of policing that focuses on the police building ties and working closely with members of the communities.

- Homeless Outreach and Outreach to Drug Users: Southern Station officers coordinate with city agencies to provide outreach and assistance to rehabilitate those who are dependent on illegal drugs and outreach to homeless individuals to connect them with resources and support.
- Foot Patrols: Southern Station has beat officers assigned to the Mission Street corridor from 4th St to 9th St and on 6th St between Mission St and Howard St.
- Monthly Police Community Relations Meetings: Community Meetings are held continuously. Officers also attend meetings with merchants groups, business groups, development authorities and others. Concerns are voiced and addressed through problem solving.
- Email Updates: Southern Station sends out newsletter updates to residents in the district that alerts residents of crime trends, upcoming community events, crime prevention tips, and information on how to contact officers at the district station.



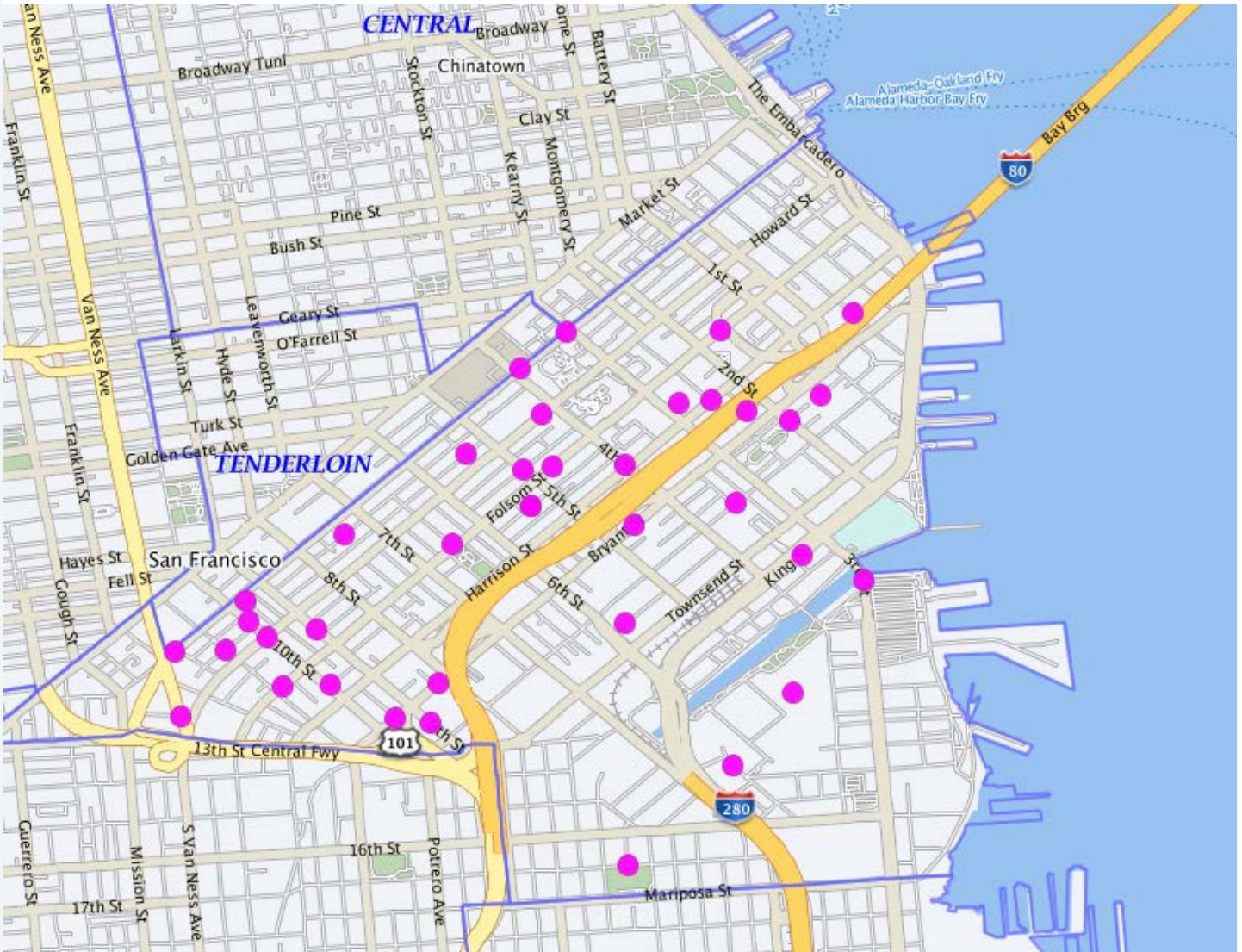
April 26 - May 23, 2019 Crime Data

SOUTHERN DISTRICT INCIDENTS	
BURGLARIES:	
Attempted Forcible Entry	1
Forcible Entry	22
Unlawful Entry - No force	18

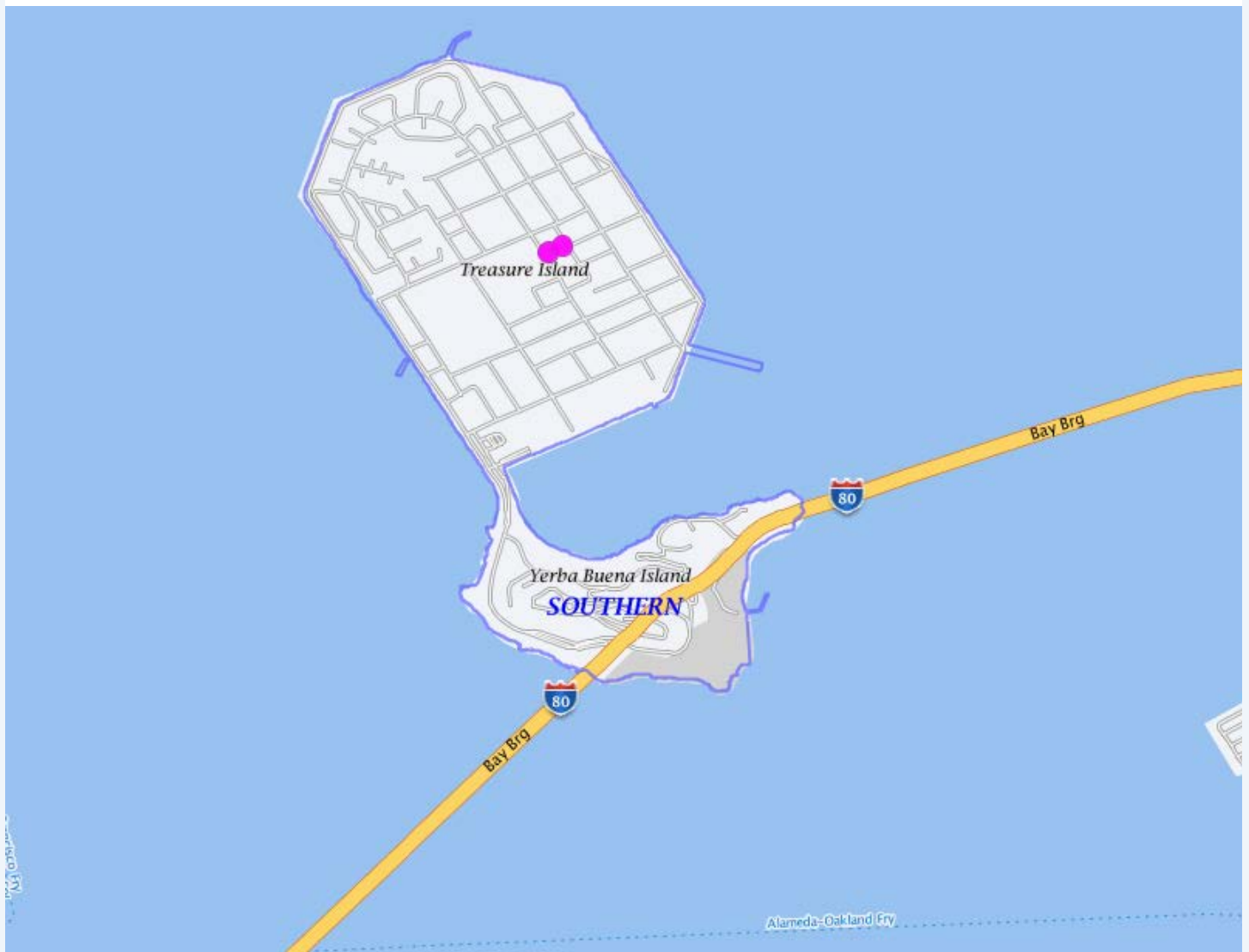
SOUTHERN DISTRICT INCIDENTS	
ROBBERY:	
Firearm	1
Knife or Cutting Instrument	1
Strong-arm (No Weapon)	17
Other Dangerous Weapon	0

SOUTHERN DISTRICT INCIDENTS	
ASSAULTS:	
Firearm	0
Hands, Fists, Feet, Etc.	6
Knife or Cutting Instrument	4
Other Assaults (Misdemeanors)	60
Other Dangerous Weapon	14

BURGLARIES / SOUTH OF MARKET April 26 – May 23, 2019



BURGLARIES / TREASURE ISLAND & YBI April 26 – May 23, 2019

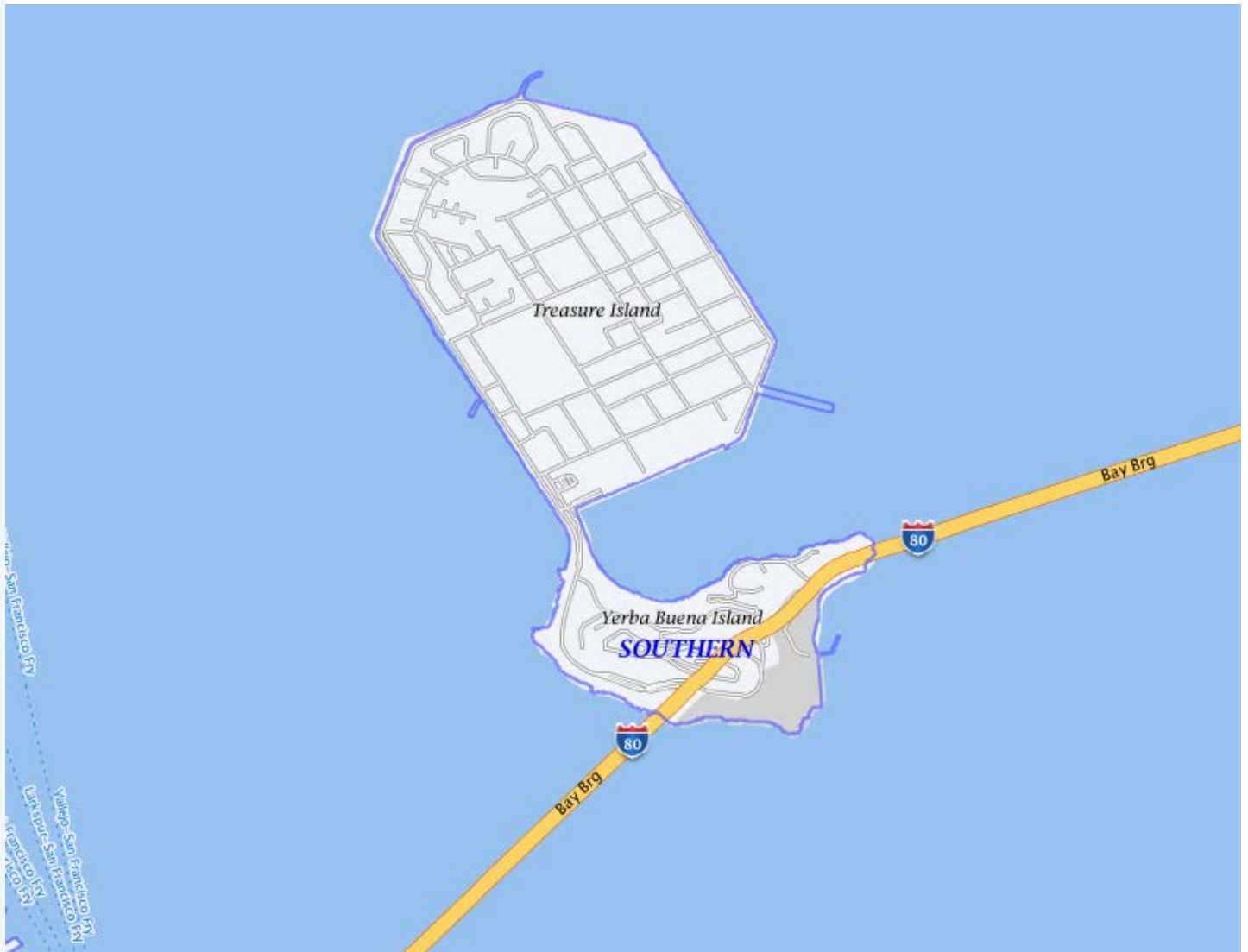


ROBBERIES / SOUTH OF MARKET April 26 – May 23, 2019



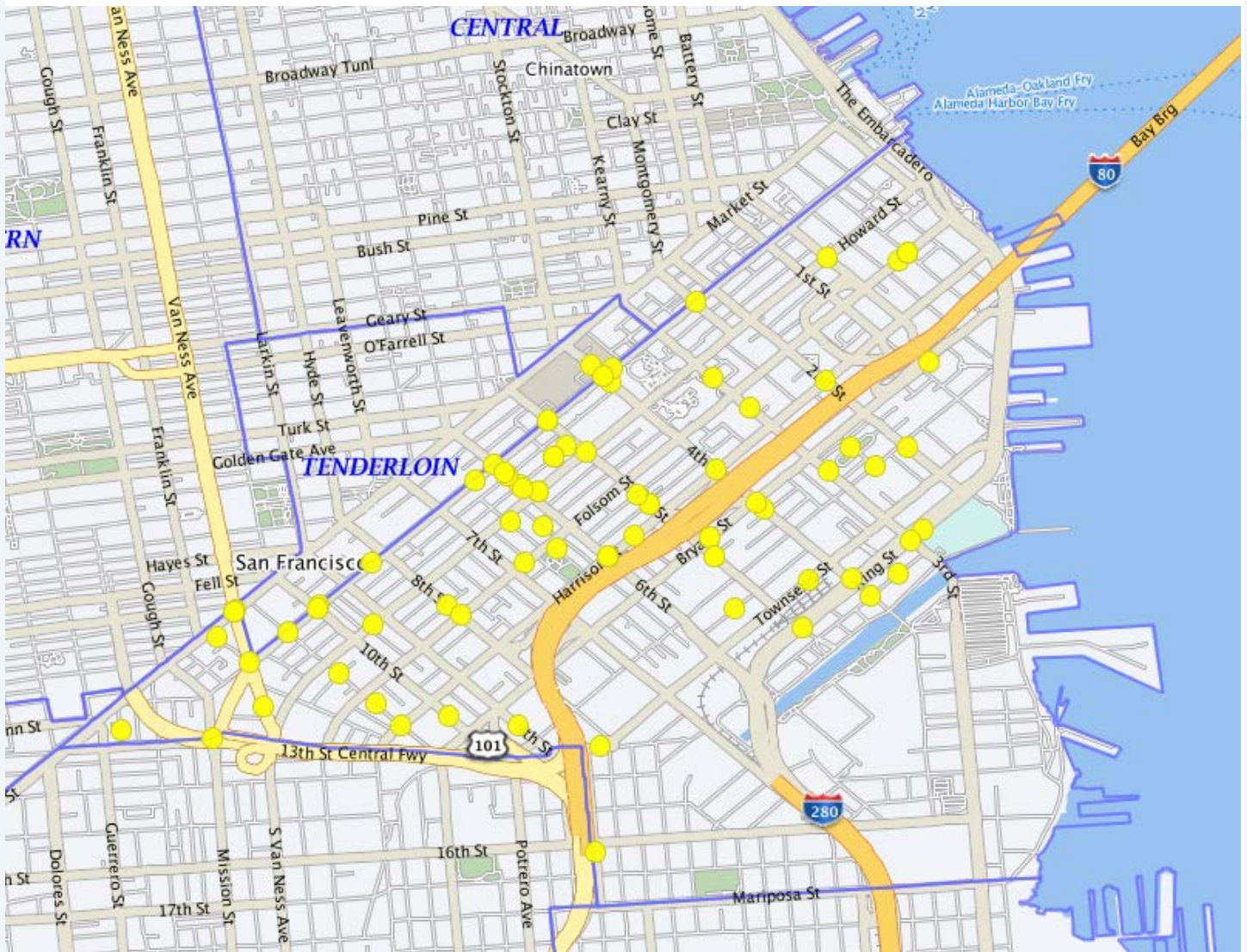
ROBBERIES / TREASURE ISLAND & YBI

April 26 – May 23, 2019



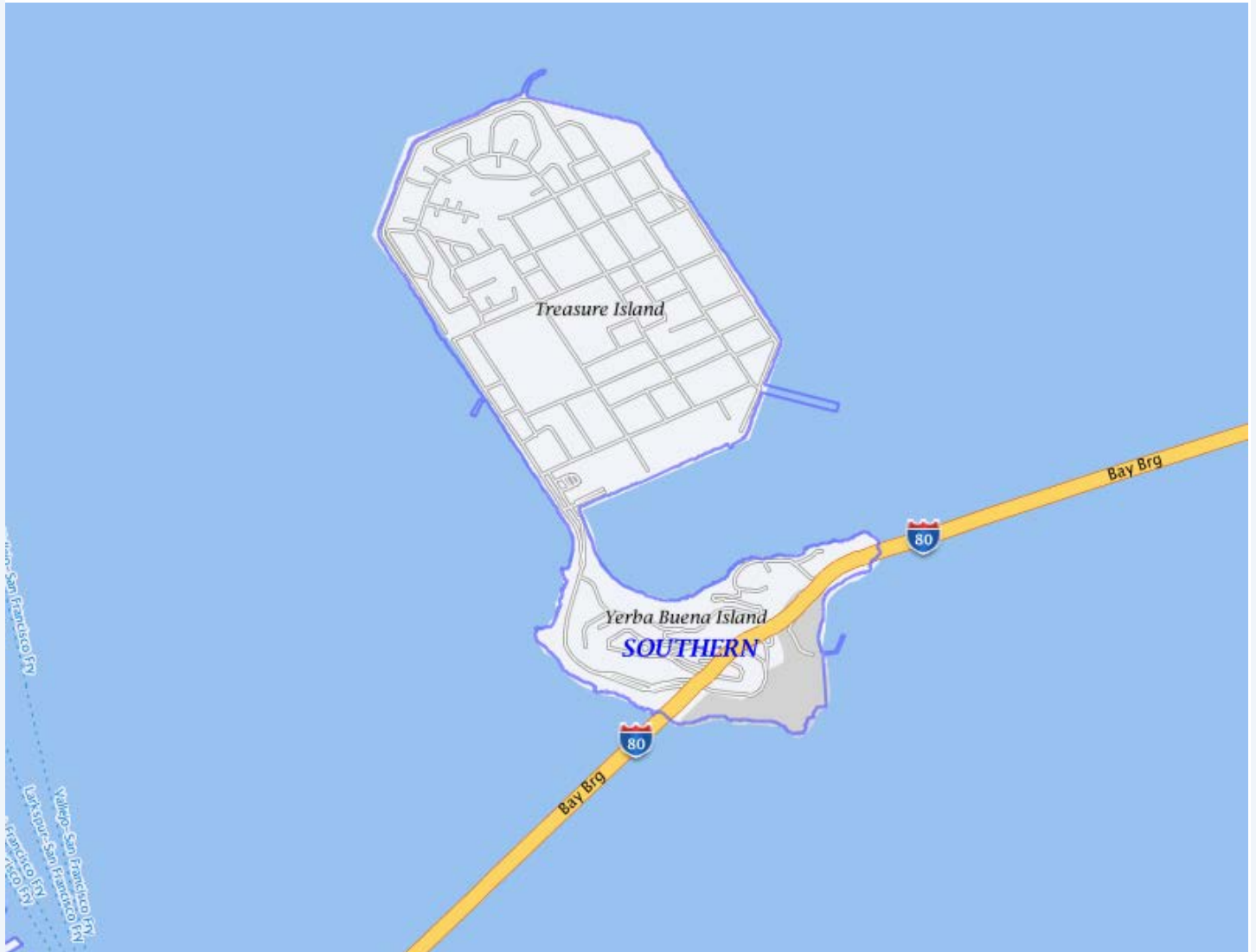
ASSAULTS / SOUTH OF MARKET

April 26 – May 23, 2019



ASSAULTS / TREASURE ISLAND & YBI

April 26 – May 23, 2019





**Focus on the Five
Dangerous Intersections**

2nd St @ Brannan St

2nd St @ Bryant St

10th St @ Harrison St

7th St @ Harrison St

In an effort to improve vehicular and pedestrian safety Citywide, the San Francisco Police Department has identified the five most dangerous intersections in the Southern District. We have implemented the “**Focus on the Five**” traffic safety initiative. Southern Station Officers will be engaging in increased traffic enforcement at these intersections.

22450(a) CVC: The driver of any vehicle approaching a stop sign at the entrance to, or within, an intersection shall stop at a limit line, if marked, otherwise before entering the crosswalk on the near side of the intersection

21453 (a) CVC: A driver facing a steady circular red signal alone shall stop at a marked limit line, but if none, before entering the crosswalk on the near side of the intersection, and shall remain stopped until an indication to proceed is shown.

22350 CVC: No person shall drive a vehicle upon a highway at a speed greater than is reasonable or prudent having due regard for weather, visibility, the traffic on, and the surface and width of, the highway, and in no event at a speed which endangers the safety of persons or property.

21950(a) CVC: The driver of a vehicle shall yield the right-of-way to a pedestrian crossing the roadway within any marked crosswalk or within any unmarked crosswalk at an intersection, except as otherwise provided in this chapter.

22107 CVC: No person shall turn a vehicle from a direct course or move right or left upon a roadway until such movement can be made with reasonable safety and then only after the giving of an appropriate signal in the manner provided in this chapter in the event any other vehicle may be affected by the movement.



Register Your Camera

The San Francisco District Attorney's Office invites you to register your security camera. The goal of the program is to deter crime and promote public safety through collaboration between the San Francisco District Attorney's Office and the communities we serve. Please complete and submit all fields below, and carefully review the Policy & Terms of Use.

To register your camera, visit

<http://sfdistrictattorney.org/Register-Your-Camera>

Park Smart!



Safe Habits to Adopt:



Turn off the ignition

Never leave your car running unattended



Keep your vehicle & tires in good condition

to prevent breakdowns—stranding you in a dark or unfamiliar place



Lock your doors

when you get in your car



See something, say something

If you see a motorist in distress, call 9-1-1 versus stopping to help



Clear your trunk

and take your valuables with you every time you leave your car



If you are being followed,

drive to the nearest police or fire station—a populated area is a good default





**Youth Football & Cheer
Registration for the 2019 Season is now Open**

Who: Boys and Girls 7-12 years old

Where: Kimbell Playground (Pierce St. & Ellis St.)

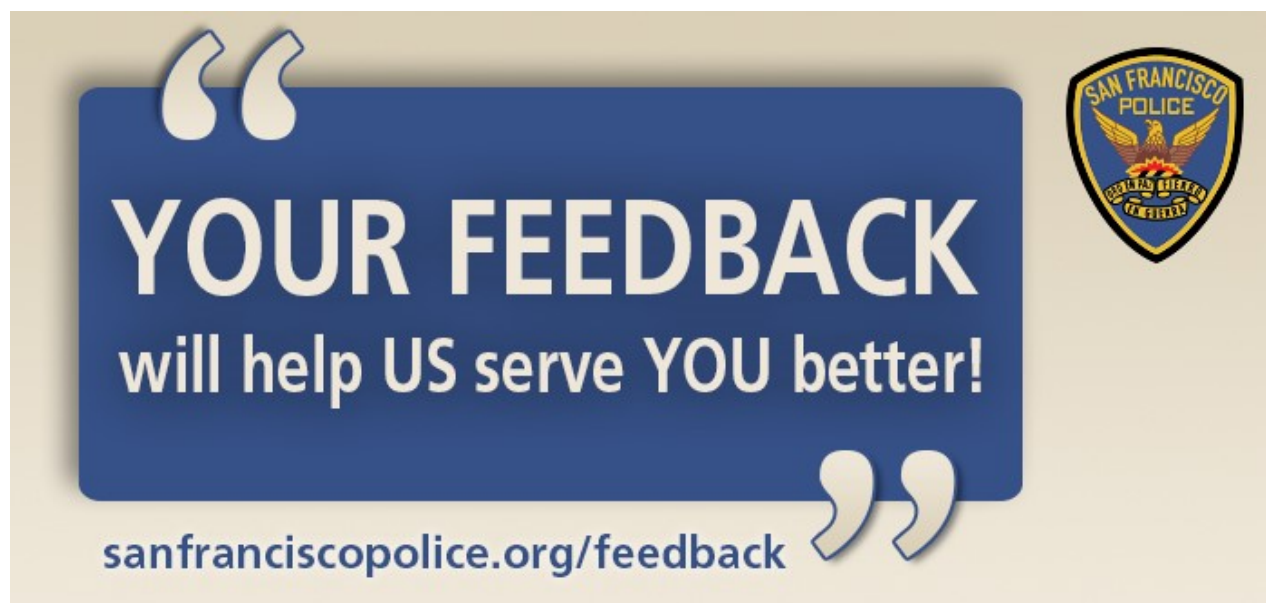
Season: August-November

Cost: FREE

Registration: Online at sfpal.org or on-site

For more information please visit our website at sfpal.org or call our office (415)401-4666





The SFPD wants to hear from YOU.

We are committed to excellence in law enforcement and are dedicated to the people, traditions and diversity of our City. Our mission is to provide service with understanding, response with compassion, performance with integrity and law enforcement with vision.

We welcome your comments. Let us know how we're doing, what we could be doing better and your thoughts on how your police department can work more closely with the community we proudly serve.

Visit us at sanfranciscopolice.org/feedback. Your feedback will help SFPD better serve our City.

Comments will be reviewed by our Community Engagement Unit and forwarded to the relevant unit, department office or neighborhood station for review and follow up, if appropriate.

(If this is an emergency, please call 911. For non-emergencies, call 415-553-0123. You may also visit <http://sanfranciscopolice.org/police-commendation-complaint> for more information on providing input on SFPD policies and practices.)



Career Opportunities



Join The S.F.P.D. – San Francisco's Finest

The San Francisco Police Department welcomes dedicated men and women to join us in serving our City. I encourage you to apply to become one of San Francisco's finest.

The City and County of San Francisco invites you to join a highly respected police department and serve the citizens of one of the most beautiful cities in the country. San Francisco Police Officers perform a wide variety of duties to promote public safety and security, prevent crime and enforce the law. Police officers perform a number of essential functions. For example, they patrol districts to prevent and detect crime; respond to calls for assistance; conduct criminal investigations; interact with the community to build cooperation and support; pursue and arrest suspects; enforce traffic and parking laws; write reports and maintain records; work with superiors, peers, and others as a team; prepare for and participate in planned events; prepare for court and give testimony; and fulfill other administrative duties when required. This is much more than a job; it is an opportunity to build a career of which you can be proud.

Applying is Easy!



1. Apply with the City and County of San Francisco at www.jobaps.com/sf (Entry Level (Q-2) Police Officer)
2. Go to www.nationaltestingnetwork.com, choose law enforcement, and register to take the San Francisco exam (\$45). Financial assistance is available.
3. Choose an available exam date that's convenient for you.
4. Schedule your exam.
5. You will receive an email confirming your exam date, time and location.

Have Questions? Contact the San Francisco Police Department Recruitment Unit

1245 3rd Street, 5th Floor, San Francisco, CA 94158

Phone: 415-837-7245

Fax: 415-575-6095

 joinsfpd@sfgov.org
 twitter.com/SFPDRecruitment
 facebook.com/SFPDRecruitment

The San Francisco Police Department values diversity in its workforce, and is committed to fair and equal treatment of all applicants for employment. Discrimination on the basis of sex, race, religion, color, national origin, ancestry, disability, medical condition, marital status, sexual orientation, or other protected categories is prohibited and unlawful.

EMERGENCY:	911
Non-Emergency:	553-0123
Cell Phone 911:	911
SF Services Center:	311 / www.sf311.org
Southern Station:	575-6000
Captain Ed Del Carlo	sfpdsouthernstation@sfgov.org 575-6000
Patrol Lieutenants	sfpdsouthernstation@sfgov.org 575-6000
Anonymous Tip-Line	552-4901
SF S.A.F.E.	553-1984
Website:	http://sanfranciscopolice.org/southern-station
SFPD Tip Line:	575-4444
Text a Tip:	847411 (Tip 411)
SF Homeless Outreach:	734-4233
Graffiti Abatement:	278-9454
Southern Events:	575-6000 – Sgt. Dion McDonnell
Southern Permits/ Code Abatement:	575-6000 – Ofc. Laurence Gabriel
Deputy DA, Southern:	553-9407 – Tom Ostly
Dept. of Parking & Traffic:	553-1943
DPW Dispatch	311
Deputy City Attorney	554-3887 - Jennifer Choi



We, the members of the San Francisco Police Department, are committed to excellence in law enforcement and are dedicated to the people, traditions and diversity of our City. In order to protect life and property, prevent crime and reduce the fear of crime, we will provide service with understanding, response with compassion, performance with integrity and law enforcement with vision.

