



Tenderloin Station Newsletter

San Francisco
Police Department



Tuesday , Sept. 25th, 2018

Captain Carl Fabbri Message

Tenderloin Community,

It has been a busy month for us here at Tenderloin Station staffing several protests and events occurring in and around the district.

Over the past two weeks we have deployed numerous Officers around the clock to UN Plaza. Enforcement, partnerships and constant presence of the SFPD Mobile One Command Van, is making a difference in the Plaza. We will continue this assignment in the weeks to come and maintain the Plaza as a safe place for everyone to enjoy.

Recently a UN Plaza community group has been established with stake holders, numerous San Francisco city departments, and SFPD Tenderloin Officers to ensure the plaza gets the attention it needs and deserves.

Sincerely,

Captain Carl Fabbri

Tenderloin District Station



Captain Carl Fabbri
Commanding Officer Tenderloin Station

Inside this issue:

- Captain's Message 1
- Definition of Suspicious Activity 2
- Definition of Community Policing 3
- Top Arrests 4
- Crime Stats 5
- Press Releases/Events/Info 6
- Career Opportunities 7
- Resource Information 8

Next Community Meeting:

October 30 2018

6:00p.m.-7:30p.m.

Tenderloin Station
Community Room
301 Eddy Street

Thank you for subscribing to our Newsletter!

Please follow us on Twitter @SFPDTenderloin

Chief William Scott's message

<http://sanfranciscopolice.org/chief-police>

Definition of Suspicious Activity

Suspicious activity is any observed behavior that could indicate a crime-related incident has been committed, or about to be committed. Unusual items or situations: A vehicle is parked in an odd location, a package/luggage is unattended, a window/door is open that is usually closed, or other out-of-the-ordinary situations occur.

Examples of Suspicious Activity:

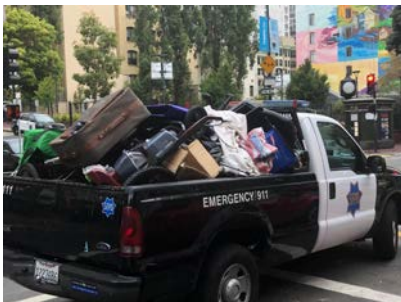
- ◆ An individual peering into vehicles, to try, and locate any valuables left unattended.
- ◆ An individual trying door handles to vehicles, and/or residences to gain access to the vehicle and/ or residence.
- ◆ An individual checking front doors of residences to locate any unattended packages, or individuals following delivery trucks to see where the truck is dropping off packages.



**See something.
Say something.**

Definition of Community Policing

Community policing, or community-oriented policing, is a strategy of policing that focuses on police building ties and working closely with members of the communities.



Top Arrests

<p>09/02/2018</p> <p>Larkin / Myrtle St</p>	<h3>Firearm Arrest Suspect</h3> <p>Booked: N/W 69(a) PC, N/W 25400(a)(1) PC, N/W 25400(a)(5) PC, N/W 25400(c)(4) PC, N/W 25850(C)(6) PC, N/W 273A(a)PC, N/W 30305 (a) PC, 148(a) PC, 664/2800.1(a) CVC, 12500(a) CVC, N/W 290.012(a) PC, 5200(a) CVC, N/W 29900(a)(1) PC</p> <p>On 09/02/18, Officers responded to a reported suspect sleeping in a vehicle with a firearm and a child inside. When officers arrived they attempted to separate the suspect from the vehicle and the possible firearm.</p> <p>However, the suspect attempted to start the vehicle and flee. The officers were able to detain the suspect and recover a loaded Glock 9mm handgun from the center console area. The seven year old child was not harmed.</p>
---	--

<p>09/17/2018</p> <p>8 10th Street</p>	<h3>Robbery, With Force</h3> <p>Booked: N/W 211PC</p> <p>The victim rode in an Uber to 8 10th Street and got off. As he was walking toward the front door to the building, the suspect ran up to him, forcefully grabbed ahold of the backpack and ran away with it.</p> <p>The victim chased after the suspect and tackled the suspect to the ground. The victim held onto the suspect until Officers arrived on scene and took custody of the suspect.</p>
--	--

Tenderloin - Reported Incidents Year-To-Date Sep 18



Reported Incidents/Occurrences In The Tenderloin Data from CompStat/Business Intelligence

Tenderloin Police Station Incidents Reported	Aug 2018	Sept 18 2018	*YTD 2018	June 2017	July 2017	Aug 2017	Sept 18 2017	*YTD 2017	August Variance	Sept 18 2018 Variance	*YTD Variance
Assault	116	54	870	111	111	90	70	866	28.9%	-22.9%	0.5%
Firearm	1	0	5	0	0	2	1	9	no calc	no calc	-44.4%
Hands, Fists, Feet, Etc.	11	9	92	10	10	9	11	96	22.2%	-18.2%	-4.2%
Knife or Cutting Instrument	7	4	57	6	9	6	8	63	16.7%	-50.0%	-9.5%
Other Assaults (Misdemeanors)	84	38	594	83	72	58	40	580	44.8%	-5.0%	2.4%
Other Dangerous Weapon	13	3	122	12	20	15	10	118	-13.3%	-70.0%	3.4%
Auto Burglary	53	13	513	80	63	55	49	579	-3.6%	-73.5%	-11.4%
Robbery	36	25	370	41	52	41	30	372	-12.2%	-16.7%	-0.5%
Firearm	1	2	28	1	2	3	5	27	-66.7%	-60.0%	3.7%
Knife or Cutting Instrument	6	3	40	5	8	3	3	40	100.0%	0.0%	0.0%
Other Dangerous Weapon	5	3	23	4	4	4	0	33	25.0%	no calc	-30.3%
Strongarm (no weapon)	24	17	279	31	38	31	22	272	-22.6%	-22.7%	2.6%

*YTD CompStat Data Through Sept 18



Register Your Camera

The San Francisco District Attorney's Office invites you to register your security camera. The goal of the program is to deter crime and promote public safety through collaboration between the San Francisco District Attorney's Office and the communities we serve. Please complete and submit all fields below, and carefully review the Policy & Terms of Use.

To register your camera, visit

<http://sfdistrictattorney.org/Register-Your-Camera>



Career Opportunities



Join The S.F.P.D. – San Francisco's Finest

The San Francisco Police Department welcomes dedicated men and women to join us in serving our City. I encourage you to apply to become one of San Francisco's finest.

The City and County of San Francisco invites you to join a highly respected police department and serve the citizens of one of the most beautiful cities in the country. San Francisco Police Officers perform a wide variety of duties to promote public safety and security, prevent crime and enforce the law. Police officers perform a number of essential functions. For example, they patrol districts to prevent and detect crime; respond to calls for assistance; conduct criminal investigations; interact with the community to build cooperation and support; pursue and arrest suspects; enforce traffic and parking laws; write reports and maintain records; work with superiors, peers, and others as a team; prepare for and participate in planned events; prepare for court and give testimony; and fulfill other administrative duties when required. This is much more than a job; it is an opportunity to build a career of which you can be proud.

Applying is Easy!

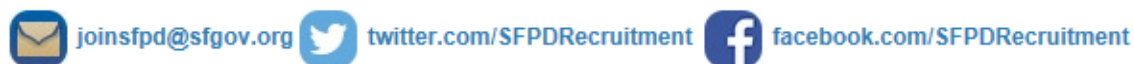
1. Apply with the City and County of San Francisco at www.jobaps.com/sf (Entry Level (Q-2) Police Officer)
2. Go to www.nationaltestingnetwork.com, choose law enforcement, and register to take the San Francisco exam (\$45). Financial assistance is available.
3. Choose an available exam date that's convenient for you.
4. Schedule your exam.
5. You will receive an email confirming your exam date, time and location.

Have Questions? Contact the San Francisco Police Department Recruitment Unit

1245 3rd Street, 5th Floor, San Francisco, CA 94158

Phone: 415-837-7245

Fax: 415-575-6095



The San Francisco Police Department values diversity in its workforce, and is committed to fair and equal treatment of all applicants for employment. Discrimination on the basis of sex, race, religion, color, national origin, ancestry, disability, medical condition, marital status, sexual orientation, or other protected categories is prohibited and unlawful.

EMERGENCY:	911
Non-Emergency:	553-0123
Cell Phone 911:	553-8090
Customer Service Center:	311
Tenderloin Station:	345-7300
Captain Carl Fabbri	345-7300 carl.fabbri@sfgov.org
Lt. Dean Hall (MMFB)	Hugh.Hall@sfgov.org
Lt. Eric Altorfer (D)	Eric.Altorfer@sfgov.org
Lt. Tom Harvey (N)	Thomas.Harvey@sfgov.org
Lt. John Burke (N)	John.Burke@sfgov.org
Lt. Dennis Toomer (D)	Dennis.Toomer@sfgov.org
(D)- Day Watch	
(N)- Night Watch	
(I) Investigations	
Anonymous Tip-Line	929-9446
S.A.F.E.	553-1984
Website:	www.tenderloinstation.org
Narcotics	1-800-272-2548
Homicide Tip Line:	575-4444
Text a Tip:	847411 (Tip 411)
Violent Crime	575-4444
Graffiti Abatement:	850-6951
Tenderloin Events:	345-7340 – Sgt. Matthew Loya
Tenderloin Permits/ Code Abatement:	345-7341 – Officer Robert Royer
Deputy District Attorney:	415-553-9407 -Thomas Ostly
Dept. of Parking & Traf- fic:	553-1943
DPW Dispatch	311



We, the members of the San Francisco Police Department, are committed to excellence in law enforcement and are dedicated to the people, traditions and diversity of our City. In order to protect life and property, prevent crime and reduce the fear of crime, **we will provide service with understanding, response with compassion, performance with integrity and law enforcement with vision.**

