



Park Station Newsletter



Thursday, May 16, 2019



Captain Una Bailey
Commanding Officer
Park Station



Captain Bailey's Message

Inside this issue:

Captain's Message	1
Bay to Breakers	2-4
Distracted Driving	5-6
Collaborative Reform	7-9
Community Engagement	10-15
New Playground	16
Officers of the Month	17
Arrest of the Week	18-19
Crime Map	20
Crime Stats	21-22
Cadets / SFPAL	23-24
Up Coming Events	25-26
SAFE Bike Registry	27-30
Syringe Disposal	31
Helpful Tips	32-37
Definitions	38-39
730 Stanyan Street	40
Community Meeting	41
Park Station's Vision	42
Resources	43-46

Hello all,

It is that time of year again when we welcome the Bay to Breakers competitors through our district. Please take the time to review the following pages for information regarding road closures and muni rerouting to accommodate the race. If you live along the route please take note of any no parking signs posted to accommodate the race. Vehicles in violation of the signs will be towed.

SFPD will have a high visibility along the race route to ensure everyone's safety.

Good luck to all participants.

Be safe,

Captain Una Bailey

Park Station



Next Community Meeting:

Tuesday,
June 11, 2019
7:00p.m.-8:00p.m.

Park Station's
Community Room
1899 Waller Street

Please follow the below link to SFPD Chief Scott's message:
<http://sanfranciscopolice.org/chief>

Please follow the below link to subscribe to our newsletter list: <http://sanfranciscopolice.org/park-newsletters>
Please follow us on Twitter SFPDPark.

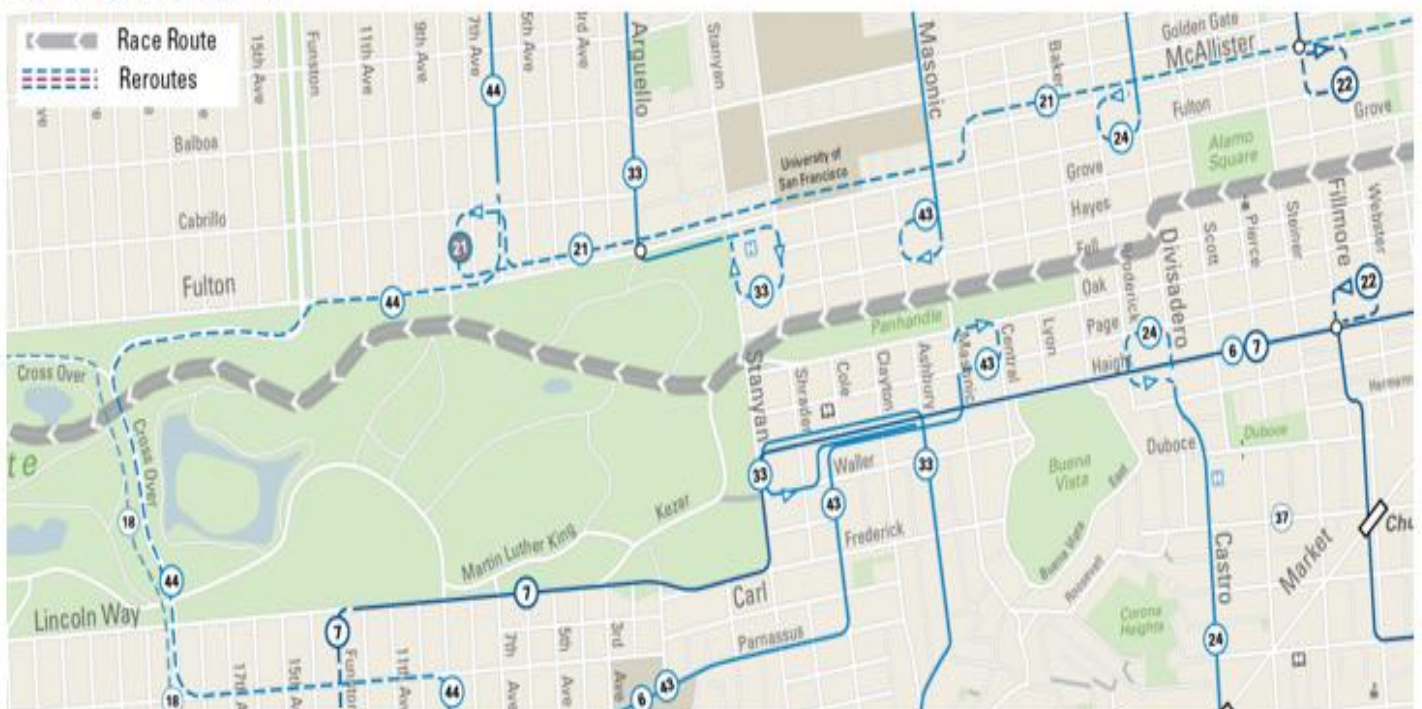
BAY TO BREAKERS MUNI INFORMATION

Anyone traveling in San Francisco can check www.sfmta.com, or call 311 to find out, which of the 83 Muni lines will get them where they want to go.

Contact the San Francisco Customer Service Center by calling 311 within the city, or 415-701-2311.

For details of Muni re-routes, visit <http://www.sfmta.com/news/alerts>.

This website will be updated when it is closer to the event date.

Panhandle Area

- Reroutes: 6, 7, 18, 21, 22, 24, 33, 43, 44

BAY TO BREAKERS STREET CLOSURES

Street Closures

The race starts on Howard from Steuart to 9th Street., runs along Hayes from Market to Divisadero, on Fell from Divisadero to the Golden Gate Park, and on JFK Drive all the way to the Great Highway. The [official course map](#) is available on the Bay to Breakers website. Streets will be closed in the following areas at the times indicated:

Starting Line Area

Closures from Saturday at 7 p.m. to Sunday at 4 p.m.

- **Main:** between Mission and Folsom
- **Howard:** between Embarcadero and Beale
- **Steuart:** east of Mission
- **Spear:** between Mission and Folsom

Race Route

Closures on Sunday from 3 a.m. to 10 a.m.

- **Howard:** between Beale and 3rd St
- **Beale:** between Mission and Folsom
- **Fremont:** between Mission and Folsom
- **1st St:** between Market and Folsom (Muni allowed from Market to Mission)
- **2nd St:** between Mission and Folsom
- **New Montgomery:** between Mission and Howard
- **Hawthorne:** between Howard and Folsom

Closures on Sunday from 5 a.m. to 11:30 a.m.

- **Steiner:** between Grove and Hayes
- **Baker:** between Oak and Fell

Closures on Sunday from 5 am to 1 p.m.

- **Divisadero:** between Grove and Oak

BAY TO BREAKERS STREET CLOSURES

Closures on Sunday from 5 a.m. to 4 p.m.

- **Cabrillo:** between 48th & La Playa
- **Balboa:** between 48th & Great Highway
- **Pt. Lobos:** between 48th & Great Highway

Closures on Sunday from 6 a.m. to 11 a.m.

- **Howard:** between 3rd & 9th
- **9th:** between Howard & Market

Closures on Sunday from 6 a.m. to 12:30 p.m.

- **Hayes:** between Market and Divisadero

Closures on Sunday from 6 a.m. to 2 p.m.

- **Fell:** between Divisadero & Stanyan

Closures on Sunday from 5 a.m. to 2 p.m.

- **Great Highway:** between Balboa & Pt. Lobos

Finish Line Festival Area

Closures from Saturday 7 p.m. until Sunday 4 p.m.

- **Lincoln:** westbound, between Great Highway and 48th
- **Lincoln:** eastbound, between Great Highway and La Playa
- **Fulton:** westbound, between Great Highway and 47th
- **Fulton:** eastbound, between Great Highway and 48th
- **La Playa:** between Cabrillo and Fulton

Closures from Saturday at 9 p.m. to Sunday at 4 p.m.

- **Great Highway:** between Fulton and Lincoln
- Multiple entrances to Golden Gate Park for the race period

DISTRACTED DRIVING



Distracted Driving

Distracted driving is anything that takes your eyes or mind off the road. In the smartphone age, distracted driving is the most dangerous when drivers are using their cell phone behind the wheel.

Whether it is talking, emailing, texting, plugging in directions, using an app or scrolling through social media feeds, using a cell phone is not only dangerous, but also illegal.

In 2017, 3,166 people were killed in distracted driving related crashes across the country, or nearly 10 percent of all traffic deaths.

Using a phone to dial, talk or text triples the risk of a driver getting into a crash. Texting is the most alarming distraction. Sending or reading a text takes your eyes off the road for an average of 5 seconds. At 55 mph, that's like driving the length of a football field with your eyes closed.

Other serious driver distractions such as eating, grooming, reaching for objects on the floor, changing clothes or talking with passengers are just as dangerous. The safest thing drivers can do is put down the phone, focus on the road and just drive.




Distracted Driving Prevention

- ✓ Never Text and Drive
- ✓ Silence your phone before you drive
- ✓ Pull over to safe parking spot to make a call
- ✓ Don't text or call someone you know is driving



Cell Phone Law

-  Holding a phone while driving is illegal. Any electronic device must be used in a hands-free manner, such as speaker or voice commands. The law applies when at a stop sign or signal.
-  To use a phone while driving, it must be mounted on the dashboard, windshield (seven-inch square in lower right corner or five-inch square in lower left corner), or center console.
-  When the phone is mounted, drivers can swipe or tap the screen once to activate or deactivate a feature. It is illegal to swipe multiple times, enter information or text.
-  A first offense ticket is \$162, with additional offenses costing even more.
-  You may use your phone while holding it for true emergencies, like calling 911.

For additional driver safety tips and resources, visit gosafelyca.org.

Be part of the solution by resisting the urge to talk or text while driving and "Go Safely, California."

DISTRACTED DRIVING

GO SAFELY
CALIFORNIA

CALIFORNIA OFFICE OF TRAFFIC SAFETY



We're all in it together.



Safety with Respect



Distracted Driving

It's easy to feel like driving isn't enough when there's so much more to do. It's normal to feel the urge to grab the phone. But we must stay focused on the road. Not only is holding your phone while driving illegal in the State of California, distracted driving is now the number one cause of roadway crashes. Join us in being part of the solution. Grab the wheel with both hands, enjoy the drive and focus on each other. Here are some ways you can prevent driving distracted:

- > Silence your phone before you get behind the wheel and keep it mounted in a legally approved location.
- > Never text and drive or use apps or social media while driving.
- > Do not eat, drink or program your GPS/MP3 player or other devices while driving.
- > If a phone call is necessary or you need to reroute your map, pull over to use those devices.
- > If something falls to the floor, pull over to a safe parking spot before trying to reach it.





Community Policing Is...



- *Listening* to the communities we serve
- *Collaborating* to create solutions
- *Increasing* foot patrols to make neighborhoods safer

We're dedicated to providing
Safety With Respect for All.

[sanfranciscopolice.org/transparency](https://www.sanfranciscopolice.org/transparency)



Bias-Free Policing



Everyone deserves to be treated fairly.

SFPD officers undergo Implicit Bias training. Our goal is ensure fair, impartial community policing.

We're dedicated to providing *Safety With Respect for All.*

sanfranciscopolice.org/transparency



De-escalation



Through updated policies,
new training
and de-escalation techniques,
we've reduced our use of force
by 30% since 2016.

We're dedicated to providing
Safety With Respect for All.

[sanfranciscopolice.org/transparency](https://www.sanfranciscopolice.org/transparency)

COFFEE WITH A COP

On Tuesday April 9, 2019 community members met with Captain Bailey and Park Station Officers at Martha & Bros Coffee for Coffee with a Cop. Approximately 25 community members had the chance to talk with Captain Bailey and Park Station Officers about concerns in their neighborhood.

Safety with Respect



COMMUNITY ENGAGEMENT

Students from the Chinese Immersion School participated in the Bike, Walk and Roll to School Day. Park Station Officers escorted the students along Waller Street to their school.



Captain Bailey spoke to the students about biking and walking safety before the start of the event.



COMMUNITY ENGAGEMENT

SFPAL AND SAN FRANCISCO RECREATION & PARKS SPONSERED THE KIDS' GAMES AT KEZAR

On May 5, 2019 over 250 children participated in this annual Track and Field Event

Picture below: Chief of Police, William Scott during the Opening Ceremony



COMMUNITY ENGAGEMENT GRATTON "FUN FEST"

On Sunday May 5, 2019 Captain Bailey, Officer Quock, and Officer Granucci participated in the Grattan "FUN FEST" Over 400 children and parents attended the annual event.



COMMUNITY ENGAGEMENT GRATTON "FUN FEST"



COMMUNITY ENGAGEMENT

On April 25, 2019, Officer Granucci discussed traffic and community safety awareness at Clarendon Elementary School, the picture below shows Officer Granucci in Ms. Rauchwerger 2nd grade class. All students were given SFPD stickers, SFPD safety coloring books & crayons.



NEW PLAYGROUND

On April 25, 2019, a groundbreaking event took place at the Panhandle Park for the new Panhandle Playground. The picture below shows Captain Bailey and children participating in the ceremonial, "First Shovel of Dirt."



The above picture is Mayor Breed during the groundbreaking ceremony.

OFFICERS OF THE MONTH

Captain Bailey has named Declan Flannery and Lizeth Lopez **Officers of the Month** for the month of May.



Officer Flannery



Officer Lopez

Congratulations to Officer Flannery who was in the in the 227th Academy class and Officer Lopez who was in the 259th Academy class. They both recently transferred to Park Station and work together as partners on the day watch. These Officers are on patrol on a daily basis and maintain a high visible police presence throughout the district. This high visibility and diligence deters criminals from committing crimes in the area. They both help to keep the Park District safe by pursuing and arresting criminals during their shift when deemed necessary. Officers Flannery and Officer Lopez also enjoy engaging with community members, getting to know the merchants and citizens, and petting dogs during their shift.

SOME OF PARK STATION'S ARRESTS FOR THE WEEK**Driving, License Suspended or Revoked, Traffic Violation Arrest/ Area of Central Ave. -05/06/19 15:35**

Officers from the Park Station were assigned as the traffic unit for the purpose of traffic enforcement. A vehicle was observed in the area of Central Ave. with an expired vehicle registration in violation of Vehicle Code Section 4000(a). A traffic stop was conducted on the vehicle, the driver was informed of the violation. A computer check revealed that the driver had a suspended license, and that the driver has been cited for driving without a valid driver's license in the past. The driver was issued a citation and his vehicle was towed.

Civil Sidewalks, Citation/ Area of Cole St. -05/07/19 12:32

Officers were on patrol in the area of Cole St. when they observed a female lying on the sidewalk in violation of the Sit/Lie Ordinance. Officers made contact with the female subject and she was cited.

Theft, Shoplifting, \$50-\$200; Resisting, Delaying or Obstructing Peace Officer Duties; False Identification to Peace Officer; Misdemeanor Warrant 1700 Block of Haight 05/08/19 1154

On 05/08/19 at approximately 1155 hours, Park Station officers responded to an aggressive shoplifter at a store on Haight Street. Dispatch gave the suspect description and the last direction of travel of the suspect. Responding units kept a look out for the suspect and found him walking on Cole Street. Park units attempted to contact the suspect for further investigation when he fled on foot. Officers began a foot pursuit which took them through the Panhandle and across busy intersections. The officers ordered the suspect to stop, but he ignored the officers commands and continued running. Using communication and coordination with each other, the officers were able to stop the suspect and place him into handcuffs, as he continued to resist arrest.

Assisting units contacted the victim and witnesses who stated the suspect had been drinking and loitering in front of the store. The suspect entered the store and aggressively confronted customers who were giving donations. The suspect would rummage through donated belongings and take what he wanted. He then demanded more property from the store manager who told him to leave. The suspect took merchandise and fled the store without paying.

The officers were able to recover all of the stolen property and return the property to the store manager. The suspect was arrested for shoplifting, resisting arrest and local \$5,000 warrant for a prior case involving resisting arrest. The suspect was booked and transported to county jail.

Firearm, Possession by Prohibited Person; Firearm, Possession of Loaded; Possession Firearm, Concealed; Possession of Firearm, with Priors; Possession of Firearm While on Bail Haight/Buena Vista West 05/08/19 1741

On 05/08/19 at approximately 1740 hours Park Station officers were dispatched to the intersection of Haight at Buena Vista in regards to a fight with one subject armed with a handgun. It was further revealed that the suspect had threatened a woman with the firearm and pointed it at her. A description of the suspect was given by dispatch, but the fight had dispersed and the suspect had fled before the arrival of Park units.

Park Station officers continued their search for the suspect and were able to locate him at Haight and Masonic. The suspect crossed the street and attempted to hide behind a bus shelter. The officers, knowing there was a high probability that the suspect was armed with a handgun, strategically approached the suspect and detained him at gunpoint. After the suspect was handcuffed, Park Station officers conducted a search of the suspect and found a loaded handgun hidden in his waistband.

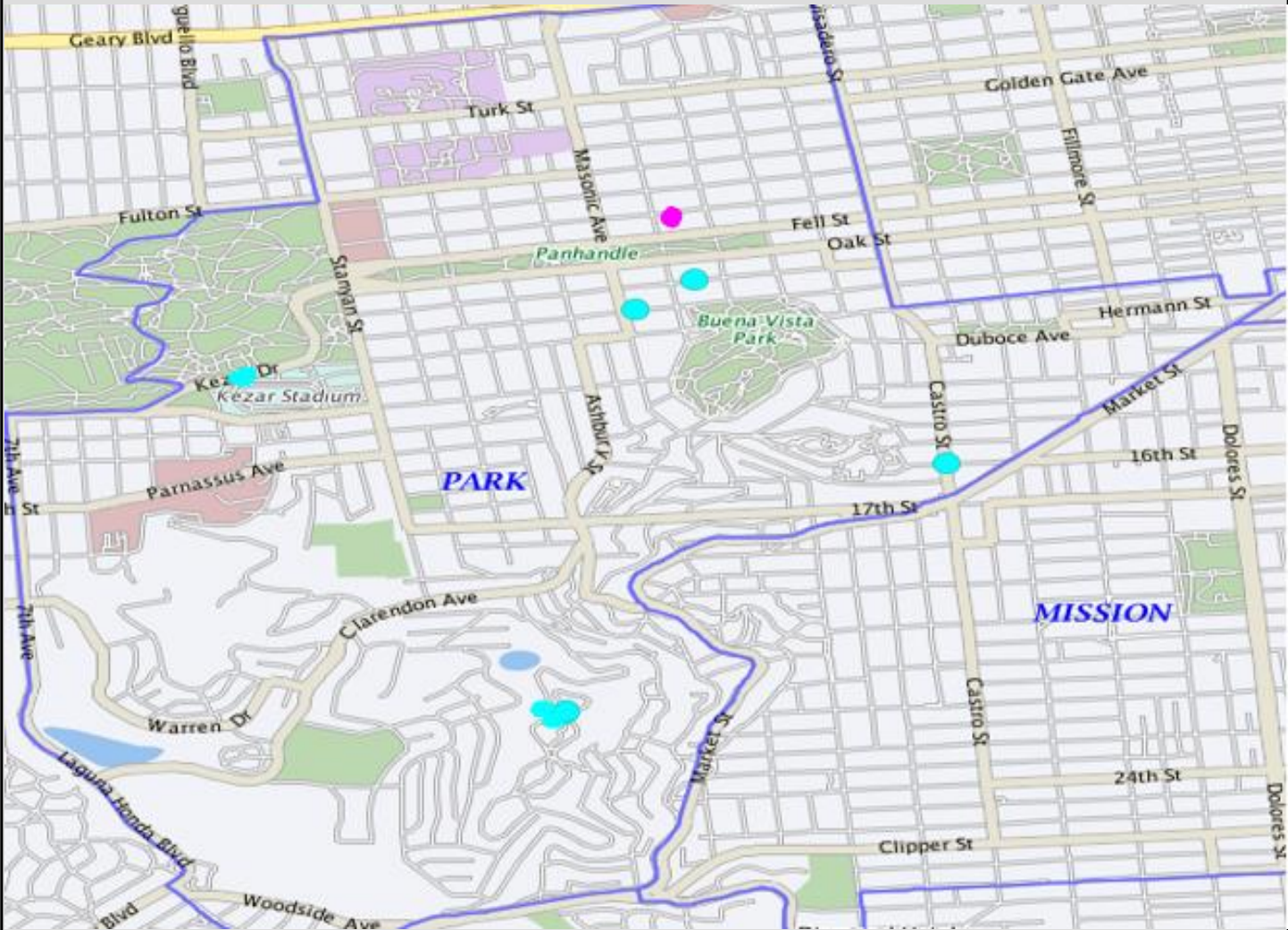
After further investigation, the officers were unable to locate the female victim of the brandishing. The officers did locate video footage of the suspect arguing with people in Buena Vista Park and pulling a handgun from his waistband, eventually pointing it at the unknown victim. It was also determined that the suspect was out on bail for another felony. The suspect was booked for the above listed charges and transported to county jail.

PARK STATION'S ARRESTS FOR THE WEEK CONTINUED**Terrorist Threats/ Area of Waller St. -05/08/19 18:13**

Officers responded to the area of Waller Street regarding a wanted threats/stalking suspect. The reporting party refused to provide their name and any contact information. The anonymous party informed dispatch that a subject, whom police had been looking for at the residence earlier in the day, had returned home. The subject was wanted for an incident that was reported by Ingleside Station officers. The subject called and threatened to kill the victim. The victim feared for his life and believed that the subject would follow through on his words. Officers attempted to contact the subject by ringing the doorbell, but had no response. Officers saw a male, matching the subject's description, lean out a third story window of the home. Officers gave verbal commands for the subject to come to the front door, but he refused. Officers set up a perimeter on the residence, after the perimeter was established the subject came out of the house. The subject was taken into custody without further incident, booked for the above charge transported to County Jail.

DISTRICT CRIME MAP

**Various Crimes that occurred in the Park District
(from Monday, 05/06/19 to Sunday, 05/12/19)**



- = Auto Burglaries
- = Robbery
- = Assaults
- = Burglary

THEFT FROM VEHICLE**Theft from a Vehicle:****(7 reported incidents of theft from vehicles occurred from 05/06/19 to 05/12/19)**

INCIDENT TYPE	DATE / TIME	LOCATION	SUSPECT DESCRIPTION	SUSPECT VEHICLE
Theft, From Locked Vehicle, \$200-\$950	05/06/2019 13:10:00	Twin Peaks	Unknown	Unk Gray SUV
Theft, From Locked Vehicle, >\$950	05/06/2019 17:00:00	1300 Block of Page St	Unknown	Unknown
Theft, From Locked Vehicle, >\$950	05/07/2019 12:40:00	Twin Peaks		
Theft, From Locked Vehicle, >\$950	05/07/2019 20:30:00	Twin Peaks	Unknown	Unknown
Theft, From Locked Vehicle, >\$950	05/08/2019 19:00:00	16th St / Castro St	Unknown	Unknown
Theft, From Locked Vehicle, <\$50	05/09/2019 22:00:00	Unit block of Kezar Dr	Unknown	Unknown
Theft, From Locked Vehicle, >\$950	05/10/2019 11:50:00	1300 Block of Haight St	Unknown	Unknown

AGGRAVATED ASSAULTS AND BURGLARY**Aggravated Assault Incidents:****(0 reported incident of aggravated assaults occurred from 05/06/19 to 05/12/19)**

INCIDENT TYPE	DATE / TIME	LOCATION	SUSPECT DESCRIPTION	SUSPECT VEHICLE

Burglary Incidents:**(1 reported incidents of burglary occurred from 05/06/19 to 05/12/19)**

INCIDENT TYPE	DATE / TIME	LOCATION	SUSPECT DESCRIPTION	SUSPECT VEHICLE
-Burglary, Apartment House, Unlawful Entry	05/09/2019 19:00:00	1600 Block of Hayes St	Unknown	Unknown

Robbery Incidents:**(0 reported incidents of robbery occurred from 05/06/19 to 05/12/19)**

INCIDENT TYPE	DATE / TIME	LOCATION	SUSPECT DESCRIPTION	SUSPECT VEHICLE

LAW ENFORCEMENT CADETS

San Francisco Police Activities League

LAW ENFORCEMENT CADETS

- Gain leadership and career skills
- Character development
- Community service
- Internship at SFPD Stations/ Bureaus
- 4-week summer training at the SF Police Academy**
June 10 - July 3, 2019
- Minimum qualifications:**
 - 14 - 20 years old
 - Reside or attend school in San Francisco
 - Enrolled in high school/college
 - Have and maintain a 2.0 GPA
 - Pass SFPD criminal history background check

Interested?

Attend the information session:

Saturday, April 6th

10:30am - 11:30am

OR

Wednesday, April 10th

6:00pm - 7:00pm

Complete the application online

<http://www.sfpal.org/programs/law-enforcement-cadets>

Cadets@SFPAL.org. (415) 401-4666

Application due by 5:00pm

Monday, May 6, 2019



SFPAL FOOTBALL



Youth Football & Cheer

Registration for the 2019 Season is now Open

Who: Boys and Girls 7-12 years old

Where: Kimbell Playground (Pierce St. & Ellis St.)

Season: August-November

Cost: FREE

Registration: Online at sfpal.org or on-site

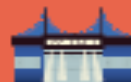
For more information please visit our website at sfpal.org or call our office (415)401-4666



OUTSIDE LANDS JOB FAIR

OUTSIDE LANDS

AUG 9-11 2019 - GOLDEN GATE PARK - SAN FRANCISCO, CA

**JOB FAIR****WEDNESDAY, JUNE 5****RICHMOND DISTRICT COMMUNITY ROOM****4PM - 7PM (461 6th Ave)**

IN ORDER TO FURTHER OUR COMMITMENT TO BEING GREAT NEIGHBORS, THIS RECRUITMENT PROCESS IS INTENDED TO PROMOTE LOCAL LABOR OPPORTUNITIES FOR RESIDENTS OF THE RICHMOND AND SUNSET DISTRICTS. SPECIAL CONSIDERATION WILL BE GIVEN TO PEOPLE LIVING IN THESE NEIGHBORHOODS.

OUTSIDE LANDS IS HIRING FOR THE FOLLOWING POSITIONS:**SITE SET-UP AND TEAR-DOWN CREW**

Help us transform Golden Gate Park into the incredible festival grounds and then help us restore it to its original beauty. Must be able to lift 25+ pounds, have reliable transportation and be willing to work extended hours.

TRANSPORTATION

Outside Lands is looking to fill several positions for drivers to work the weeks before, during, and after the festival. Must have valid driver's license with a clean driving record. Must have the ability to work outdoors and work/drive in changing weather conditions. Experience driving a truck or large van is a plus.

**NATIONAL EVENT SERVICES
SECURITY GUARDS**

NES is hiring to fill positions on their security team. Guards will be in charge of entry/exit gates, perimeter control and overall safety of the patrons. Only applicants with a valid CA Guard Card will be considered.

DÉCOR SETUP

Outside Lands is looking for friendly, energetic, and creative people with an eye for detail to fill various roles throughout the festival with décor and logistics. We are looking for team workers to help before, during, and after the festival. Must be able to lift 25+ pounds and work for extended hours.

CATERING

The catering team for Outside Lands is looking for happy catering support staff to help out in our crew catering area. We are looking for production chefs, buffet servers, kitchen assistants, and dishwashers who are able to follow instruction. Daytime and overnight shifts are available.

**BEST BEVERAGE CATERING
BARTENDERS**

BBC is looking for qualified concession attendants to serve beer and wine at the festival. Must be able to handle multiple orders and take direction during a high volume sales concession event. Must be able to lift 20 pounds and must be over 21 years of age. This event will require a TIPS or LEADS certification.

Outside Lands is committed to a policy of equal opportunity for all persons. Our policy aims to ensure that no job applicant or employee is the subject of discrimination of any kind. **MUST BE 18 YEARS OR OLDER TO APPLY.**

APPLICATIONS WILL BE PROVIDED ON SITE, PLEASE BRING A COPY OF YOUR RESUME

UP COMING EVENTS



SF BAYOU

Benefiting Special Olympics Northern California Torch Run



DATE: Saturday, June 1, 2019

TIME: 5:00 P.M.-9:00 P.M.

Cost: \$55 Per Person or \$550 a Table

LOCATION: Recology

900-7th Street

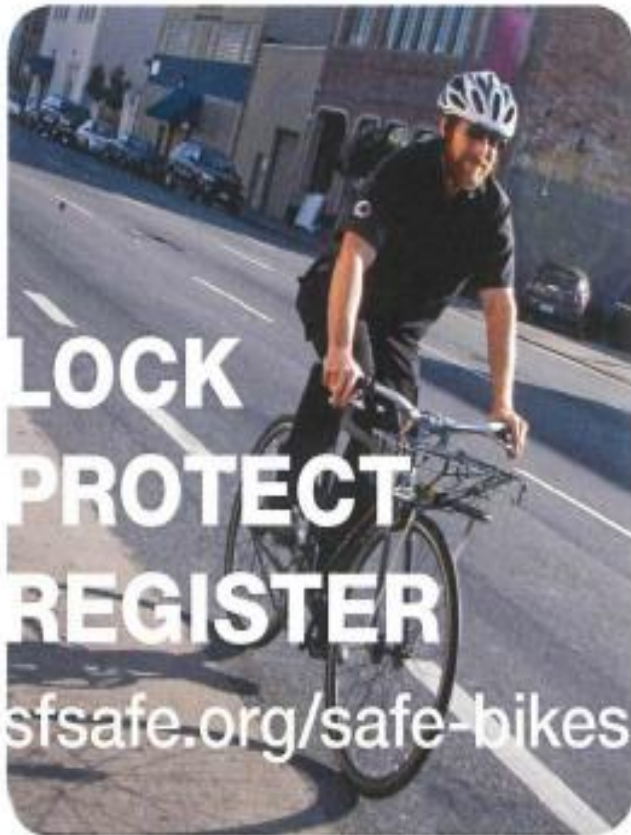
San Francisco, CA 94107



Join our Masquerade Banquet!! Enjoy a fabulous evening with
- Cajun food, live music and a silent auction. All proceeds benefit
Special Olympics. To register for the event please visit
www.sfpdforsonc.com or contact Sergeant Ray Padmore
415-558-5539 or Ms. Katie Ostrom 925-212-3852 or
katieo@sonc.org for additional information.



SAFE BIKE REGISTRY



Go to sfsafe.org/safe-bikes to register your bicycle with the SFPD and **SAFE BIKES** and for other bicycle theft prevention resources.

@SFPDBikeTheft on Twitter



CPAB/PARK



LOCK
PROTECT
REGISTER

sfsafe.org/safe-bikes

SAFE BIKES is a program of San Francisco SAFE in partnership with the SFPD

SAFE BIKE REGISTRY

ANTI-BIKE THEFT TIPS



LOCK
PROTECT
REGISTER

sfsafe.org/safe-bikes

SAFE BIKES and the SFPD recommend the Sheldon Brown Locking Method.

No locking method is 100% foolproof, but this method is highly effective.

GUIDE FOR LOCKING YOUR BIKE:

- Use the smallest U-lock that works for your bike to minimize the amount of space available for a thief to insert a jack or levers.
- Use a hardened steel U-Lock to secure back wheel inside the rear triangle of the bicycle frame.
- Check to make sure U-lock is secured to an immovable metal object.
- Secure front wheel with cable or second U-lock. Loop cable around the down tube of the bicycle or secure second U-lock to front wheel and down tube.
- Replace quick release skewers and nutted wheels with keyed locking skewers and nuts to ensure wheels and saddles are locked to the bike frame at all times.
- Check with local bike shop for proper installation of locking skewers and advice.



SAFE BIKE REGISTRY

YOU JUST BOUGHT A NEW BICYCLE— NOW WHAT?

FOLLOW THESE STEPS:

- Register** and upload receipt and photos of your bicycle at sfsafe.org/safe-bikes.
- Buy a hardened steel U-lock and a secondary lock** such as a chain or cable (See locking tools list).
- Replace quick release skewers and nutted wheels with uniquely keyed locking skewers and nuts**, which keep wheels and saddles locked to the bike frame at all times.
- Lock** your bicycle in your garage the same way you would on the street.
- Take an urban bicycling workshop** with the San Francisco Bicycle Coalition to learn safe riding practices. Go to sfbike.org for more information.
- Speak with your local bicycle shop** for more help and advice.



TOOLS TO LOCK YOUR BICYCLE

There are many different types of locks for bicycles and many incorrect ways of using them. No locking method is 100% effective.

For best security use a hardened steel U-lock, chain and locking skewers.

- | | |
|------------------------|--|
| U-lock | <ul style="list-style-type: none"> • Very good deterrent • Use the smallest U-lock that works for your bike to minimize the amount of space available for thief to insert a jack or levers |
| Chain | <ul style="list-style-type: none"> • Hardened alloy steel with thickness of at least $\frac{3}{8}$" thick and heaviest is best |
| Locking Skewers | <ul style="list-style-type: none"> • Very good deterrent • Replace all quick release parts • Check local bike shops for proper installation |
| Cable | <ul style="list-style-type: none"> • Recommended for secondary locking device • Good security for movable parts |

Bike Theft Prevention Resources can be found at sfsafe.org/safe-bikes. Check it out for important safety information, upcoming events and tools!

PREVENTING BICYCLE THEFT IN GARAGES

Garages and multi-unit apartment buildings with common garage are one of the most vulnerable places for bicycles. Thieves are waiting for the perfect opportunity.

Secure your bicycle in the garage the same way you would on the street!

- Secure to an immovable object or an anchor system.
- Never lock your bike near a window or door.
- Always watch your garage door and make sure it closes completely so unwanted visitors do not enter.
- Contact SAFE at 415-553-1984 or info@sfsafe.org for a residential security survey.

SAFE BIKE REGISTRY



**YOUR
BICYCLE GETS
STOLEN—
NOW
WHAT?**

- File a police report through sf-police.org or visit your local police district station.
- Notify **SAFE BIKES** at info@sfsafe.org or call 415-553-1984.
- Provide pictures and serial numbers for bicycle with the police report and any identifying marks.
- If you don't have a serial number or pictures, track down your serial number from the point of purchase and/or use stock photos and send them to the investigator immediately.
- File an insurance claim.

INTERNET INVESTIGATIONS

- Post pictures of stolen bicycle to **Craigslist**, set up a **Google alert**, and use **IFTTT.com**.
- If bicycle is found, contact the SFPD investigator. **DO NOT** arrange a meeting and attempt to get your bicycle back.
- Check racklove.com and stolenbikeregistry.com to find your bicycle.
- Follow [@SFPDBikeTheft](https://twitter.com/SFPDBikeTheft) on Twitter for updates on bike theft-related information.

REGISTER YOUR BIKE TODAY!
sfsafe.org/safe-bikes

**LOCK
PROTECT
REGISTER**

sfsafe.org/safe-bikes

SYRINGE DISPOSAL

**HAIGHT
ASHBURY &
COLE VALLEY
RESIDENTS
ONLY**

**IF YOU FIND A SYRINGE
PLEASE DO NOT IGNORE IT
LET'S WORK TOGETHER FOR A SAFER COMMUNITY**

IF YOU FEEL COMFORTABLE RESPONDING:

1. **DO NOT ATTEMPT TO SNAP, BEND OR BREAK ANY PART OF THE NEEDLE. IF THE CAP IS OFF DO NOT ATTEMPT TO RECAP IT.**
2. **DO GET A HARD PLASTIC, PUNCTURE RESISTANT CONTAINER AND A SET OF TONGS OR PLIERS.**
3. **PLACE THE CONTAINER ON THE GROUND NEXT TO THE SYRINGE.**
4. **PICK UP THE SYRINGE IN THE CENTER WITH THE NEEDLE POINTING AWAY FROM YOU AND PLACE THE SYRINGE IN THE CONTAINER.**
5. **SEAL THE CONTAINER AND BRING TO YOUR LOCAL SYRINGE ACCESS PROGRAM OR DROP IT OFF AT A 24-HOUR DISPOSAL SITE.**

**IF YOU DO NOT FEEL COMFORTABLE RESPONDING:**

YOU CAN TEXT HYA AT 415-630-0744 WITH THE LOCATION AND WE WILL RESPOND THE SOONEST WE CAN, MONDAY - FRIDAY.

OR CALL 311

YOUR LOCAL SYRINGE ACCESS PROGRAM IS LOCATED AT 558 CLAYTON (INSIDE THE HAIGHT ASHBURY FREE CLINIC) MONDAY, WEDNESDAY AND FRIDAY FROM 5:30-7:30PM

24 HOUR DISPOSAL BOXES (UNFORTUNATELY THERE ARE NONE NEAR BY)

330 ELLIS ST. GLIDE PARKING LOT
50 IVY STREET NEAR TOM WADDELL CLINIC
76 IVY STREET NEAR PLEASE TOUCH GARDEN
150 GOLDEN GATE AVE.
149 TURK ST.
45 JONES ST.

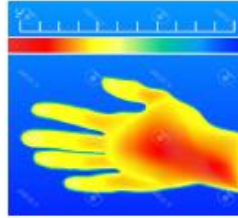
SAFE VIDEO SURVEILLANCE RECOMMENDATIONS

SEPTEMBER 2018



HIGH RESOLUTION

If you connect your camera to a DVR or other device, it will also need to be HD Compatible.



INFRARED (IR)

Built-in IR cut-switch that automatically enables/disables the infrared depending on the light conditions.

IN THE KNOW

The camera's viewing angle determines how much space the camera will cover. Wider angled lenses help cut down the # of cameras required for overall coverage. Video Surveillance should be utilized at your property with at least one camera facing towards the address street and camera should be registered with the District Attorney's office

REGISTER YOUR CAMERA
District Attorney's office

sfdistrictattorney.org/register-your-camera

RING SYSTEM

www.ring.com

(Basic) Video Doorbell Battery-powered	Video Doorbell #2 Quick-release battery	Pro Hardwired
(Basic) Spotlight Cam LED spotlights and siren	Mounted LED spotlights and siren	Alarm Security Kit (Not Central Monitored)

RING PROTECTION PLUS

Professional monitoring with cellular backup, plus unlimited video recordings.

NEST

www.nest.com

Nest Cam Outdoor Hardwired	Nest Cam Indoor Hardwired	Nest Hello Doorbell Hardwired
	NEST AWARE Monthly subscription for 24/7 Continuous Recording Intelligent Alerts Clips and Timelapses Activity Zones	



www.sfsafe.org
(415) 553-1984



SAFE and SFPD recommend the use of Closed Circuit Television System for Video Surveillance

CCTV relies on strategic placement of cameras, and observation of the camera's input captured on monitors.

DISCLAIMER

The information provided is intended to assist you in improving the overall level of security of your home or property. It is not intended to replace existing or proposed security measures.

SAFE and SFPD do not endorse any particular company and their cameras.

The cameras found on this document are the most commonly used for residential dwellings.

SAFE VIDEO SURVEILLANCE RECOMENDATIONS



Arlo Pro 2 (Arlo.com)

FEATURES

- View and Record in wide-screen from remote viewing
- Pre-Installed 500GB Hard Drive (expandable) up to 3TB
- Longer recording times (up to 30 days) available with use of motion detection and/or resolution adjustments
 - IP 66 indoor/outdoor weatherproof cameras
 - 24 LEDs for night vision



Amcrest.com (CCTV)

FEATURES

- Works with Alexa for voice control
- Flexible powering options use wire-free, plugged in
 - 7 Days of Cloud Recordings
 - 855 nm LEDs for night vision(25 ft)
- Arlo Smart adds powerful intelligence to your cameras. Customize alerts to detect people, specific zones, and contact first responders right from your smart phone's lock screen (optional service, includes 1-month trial)

Overview

Note: The following information is specific to commercial and retail establishments; however, can be applied to any location utilizing video surveillance.

Basic set up and maintenance problems can reduce the effectiveness of many systems.

- Resolution – is it good enough for facial recognition.
- Camera position – are they positioned for clear view of suspect.
- Lighting – is it adequate to capture clear images both day and night.
- Image detail – is the recorder set up for best image detail.
- Maintenance – are you maintaining your system properly so it can do its job when needed?

Set Up and Maintenance

- **Backlighting** – when sun is bright at doorway, images in front appear darker or even black. Use another light source inside to counteract back light.
- **Low Frame Rate** – saves on drive space and gives better image quality, but you may not get an image at all (now you see him; now you don't).
- **Obstructions** – displays and other objects blocking view **should be eliminated.**
- **Focus Problems** – must check system regularly to prevent.

Minimum camera resolution should be **480 horizontal lines.**

Good cameras have **faster lenses** (allows more lighting), larger maximum **aperture** opening (lets more light into the focal point of the camera) and controls image brightness (allows brighter images in dim lighting) – the more lighting, the more depth of field (greater depth of field; the more of the scene is in focus).

Focal Length – some cameras zoom in and out while others have a fixed focal length. The type of cameras used depends on what your needs are.

Transaction Areas – anything at a transaction point (cash register, toll booth, etc.), the subject's head should fill at least 15% of the total image in the frame, giving the detail you need.

Lines of Sight – lines of sight are always critical, make sure there are no obstructions.

Site Plan – the right site plan is crucial (retail store blueprint or **diagram**). Key camera spots are at transaction points (cash registers and entry/exit points) – the more cameras, the better.

You want good camera **overlap** (you want multiple chances to capture good images). Extra coverage is also needed for aisles, restrooms and other key points.

Camera Height – placement is very important, make sure it is as close to eye-level as possible. Otherwise, you might lose out to a baseball cap.

With a good site plan you can make sure you don't have any blind spots (you can toy around with camera positions, and do a test recording to see that you are getting what you want).

Interior Lighting – interior lighting can balance bright light from one direction (back lighting) by adding another light source from a different location (add a bank of lights).

Example: Artificial lighting (**inside store**) for cameras may be good in the morning, but by noon, the sun (through a doorway or window) can blow the entire frame out (add lighting to fill in for afternoon sunlight). Adding more light from a different direction balances lighting, giving better camera clarity (if sunlight is shining through large windows you can tent windows or add screens.

Exterior Lighting – if lights are on timers, you must adjust appropriate to seasonal changes (Fall/Winter: gets dark earlier. Spring/Summer: gets dark later).

For more information please contact San Francisco SAFE, | Phone - (415) 553-1984 | Email - info@sfsafe.org

SF311 APP

For non-emergency local government services use

311

For emergency fire, police, and medical services use

911

311

San Francisco
At Your Service



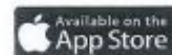
www.sf311.org

311 Mobile App

With the SF311 app, users can quickly and easily obtain information about City services and report quality-of-life issues such as graffiti, blocked sidewalks, and potholes.



Smartphone and web users can search a specialized database, designed to provide information on a wide range of topics including birth certificates, property tax resources, and parking meter enforcement dates.



Learn More at sf311.org/mobile

PARK SMART CAMPAIGN

Park Smart!



THE KEYS TO PARKED CAR SAFETY ARE IN YOUR HANDS!

If you love it, don't leave it.

DON'T TEMPT A CAR THIEF!

Car thieves only need seconds to break into your car. So Park Smart, and especially keep your trunk clear.

Take everything with you.



Park Smart!



Safe Habits to Adopt:



Turn off the ignition
Never leave your car running unattended



Keep your vehicle & tires in good condition
to prevent breakdowns—stranding you in a dark or unfamiliar place



Lock your doors
when you get in your car



See something, say something
If you see a motorist in distress, call 9-1-1 versus stopping to help



Clear your trunk
and take your valuables with you every time you leave your car



If you are being followed,
drive to the nearest police or fire station—a populated area is a good default





San Francisco Police Department
Park Station

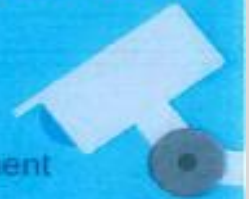
DON'T BE A VICTIM OF A BURGLARY!

Burglary Awareness & Prevention Tips for Construction Sites



Securing & Preventing

1. Secure all equipment and vehicles at all times.
2. Take effort to reduce the visibility of tools and equipment secured in vehicles or on job sites.
3. Make use of adequate lighting in conjunction with open chain-link fencing on the perimeter to allow for high visibility to the job site.
4. Strongly consider the use of security systems such as alarms and video surveillance. Ensure signage for such is clearly visible.



SFPD Park Station
1899 Waller Street
San Francisco, CA 94117
(415) 242-5000

Precautionary Measures

1. Photograph all tools. Ensure photographs clearly show the associated serial number and/or distinctive markings.
2. Ensure job site keys are marked "Do Not Duplicate" and are controlled at all times.
3. Attempt to park employee vehicles within visual range of the job site.

Should a Burglary Occur

Immediately contact 911. Be prepared to provide the following information:

- a) Time of incident.
- b) Video (if available).
- c) Items taken (include make, model, description, location taken from, value, photos and serial numbers).
- d) Insurance information.
- e) Owner's information.



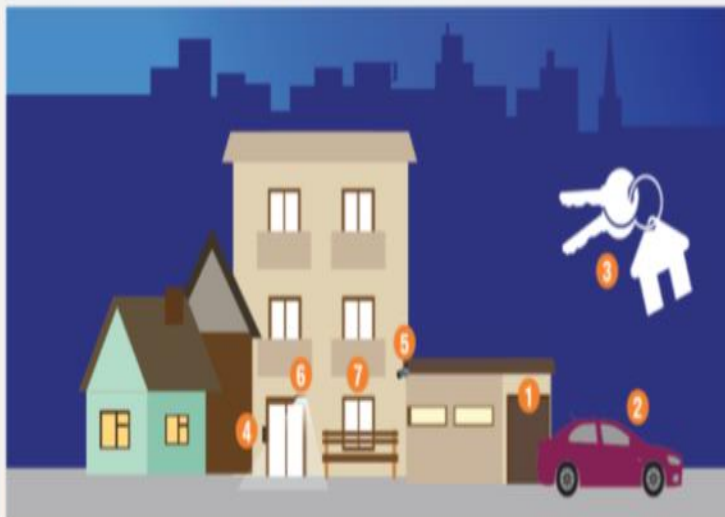
SFPD Park Station
1899 Waller Street
San Francisco, CA 94117
(415) 242-3000





Whether you live in a single family home, condo, or a large apartment complex in San Francisco, there are a number of ways you can keep your residence safe and secure. Working together as a community with your neighbors and building management can significantly improve your residential safety.

7 Residential Safety Tips



- 1 **Garage:** When entering or leaving the garage, watch to ensure door shuts completely. Lock stored bikes to a sturdy rack.
- 2 **Car:** Always lock your vehicle when parked in your garage and remove all valuables. Never leave garage door opener in your vehicle when parked outside your home.
- 3 **Spare Key:** Never hide spare keys. If you need to have a spare key available, leave it with a trusted neighbor.

- 4 **Door Buzzer:** When a visitor rings your bell, confirm who it is by intercom before you grant them access. Similarly, never let strangers follow you through the front door.
- 5 **Security Cameras & Alarm Systems:** Cost effective tools for preventing crime and identifying criminals.
- 6 **Light Timers:** Installing timers on the exterior of your residence is an effective and energy efficient way to deter criminal activity.
- 7 **Doors/Windows:** Always keep doors and windows locked.

Door and Window Safety

Doors:

- Should be made of solid wood or metal
- Have a single cylinder deadbolt lock and a 1-inch bolt
- Have a front door viewer or peep hole with a 180-degree range
- Clearly display unit number

Windows:

- Replace if glass is cracked and replace all damaged or missing locks
- Ground level windows should be burglary resistant: consider purchasing windows with reinforcement wire, laminate, or tempered glass
- Polycarbonate plastic or metal grates can be installed over existing ground level windows
- Windows above ground level are not considered secure: if used for ventilation, lock in position and keep open no more than 3 inches

Keep property in good repair. Maintain visibility to your neighbors for increased safety.



San Francisco SAFE

Empowering Communities to Create a Safer San Francisco

- Neighborhood Watch
- Community Organizing
- Security Assessments
- Safety Education

sfsafe.org
415-553-1984



DEFINITION OF SUSPICIOUS ACTIVITY

Suspicious activity is any observed behavior that could indicate a crime-related incident has been committed, or about to be committed. Unusual items or situations: A vehicle is parked in an odd location, a package/luggage is unattended, a window/door is open that is usually closed, or other out-of-the-ordinary situations occur.

Examples of Suspicious Activity:

- An individual peering into vehicles, to try, and locate any valuables left unattended.
- An individual trying door handles to vehicles, and/or residences to gain access to the vehicle and/ or residence.
- An individual checking front doors of residences to locate any unattended packages, or individuals following delivery trucks to see where the truck is dropping off packages.



CRIME DEFINITIONS*Definitions*

Robbery – Robbery is the taking of property from another by using force or by using fear.

Assault – An assault is an unlawful attempt, coupled with the present ability, to commit a violent injury on another person.

Battery - (Misdemeanor battery) is any willful and unlawful touching of another .

(**Felony battery**) is the use of force or violence upon the person of another that causes serious bodily injury.

***Assault** is when a person swings their arm and **battery** is when that arm makes contact with another person.

Aggravated Assault – Assault upon another person with a deadly weapon or instrument other than a firearm or by any means of force likely to produce great bodily injury.

Burglary – The intent upon entry into a property to commit grand theft, petty theft, or any felony.

Grand Theft – Grand theft is theft committed when the value of the money, labor, or property taken exceeds \$950.

Petty Theft – Theft where the value of the property taken is less than \$950.

INTERIM USE OF 730 STANYAN STREET

If the interim use of this location is important to you then you should contact the Mayor's office of Housing and Community Development at the below listed website.

<http://sfmohcd.org/730-stanyan>



**THE NEXT
COMMUNITY MEETING
IS ON**

TUESDAY, 06/11/19.

PARK STATION COMMUNITY ROOM 7:00 PM



PARK STATION'S VISION & VALUES**Captain Una Bailey**

I absolutely love police work and I love all that we as SFPD can do to help victims, solve and prevent crimes, and I am a firm believer in the power of the community. We, as a department, are only as successful as our partnerships with the community. I learned very early in my career how important community involvement is both in solving and preventing crimes and also in the creation of safe desirable neighborhoods. I look forward to building and maintaining community involvement and relationships over the coming years. I know that when we work together, we will create a district that will be safe and sound for all.

PARK STATION'S SOCIAL MEDIA

San Francisco Police Department



Connect with the SFPD and Your Community -
Read Our Park Station Newsletters!

Please follow the link below to subscribe to our newsletter:

<http://sanfranciscopolice.org/park-newsletters>

Please follow us on Twitter:

[@SFPDPark](https://twitter.com/SFPDPark)

For any questions or concerns, please contact us at Park Station's email:

sfpdparkstation@sfgov.org

WHO AND WHEN TO CALL?

3-1-1: Please contact 3-1-1 when the issue is a not an emergency, yet requires City services or, if you simply have questions regarding City services. Non-emergency situations include the following examples: damage to public property, public trees that requires pruning, defective streets or sidewalks, homeless-related issues. 3-1-1 was developed to help the community inform the appropriate City agency regarding a service request.

SF 3-1-1 APP is available to use on your mobile device. Download the APP and its easy to use for many Non-emergency.



Non- Emergency San Francisco Dispatch Line: Please call the non- emergency dispatch line (**415-553-0123**) when the scenario does not need immediate response from the San Francisco Police Department. For example, if there is a loud party, a group of loud juveniles loitering in front of your residence, noise complaints, doubled parked vehicles, suspicious activities, or a homeless/nuisance related issue. **The non-emergency line is for situations that require the police, but do not require an immediate police response.**

9-1-1, please call 9-1-1 immediately if there is a police, fire, medical, or any other emergency. The purpose of San Francisco's 9-1-1 Emergency Telephone System is to provide the community an immediate response of police, fire, or medical personnel for emergency occurrences. To accomplish this, it is imperative that the calls received on the 9-1-1 line be restricted to those situations that require immediate dispatching of police, paramedic, or fire department personnel. For example, crimes or fires that are in-progress, or medical emergencies.

The San Francisco Police Department district station telephone numbers and emails are not monitored. Questions will be answered in the order we receive them. Station emails are not for making police reports nor for reporting a crime. If you need to make a police report, you can call 415-553-0123 or go to your district police station. **If you have an emergency, please call 9-1-1.**



PARK STATION SECTOR SERGEANTS CONTACTS

Special Events

Officer Alaric Wu alaric.j.wu@sfgov.org

Permits/ Code Abatement

Officer Alaric Wu alaric.j.wu@sfgov.org

Day Lieutenant

Lieutenant Randy Caturay randy.caturay@sfgov.org

Day Lieutenant

Lieutenant Christopher Wilhelm christopher.wilhelm@sfgov.org

Night Lieutenant

Lieutenant David Maron david.s.maron@sfgov.org

Night Lieutenant

Lieutenant Tammy Halley tammy.halley@sfgov.org

Investigations Lieutenant

Lieutenant Eric Altorfer eric.altorfer@sfgov.org

Commanding Officer

Captain Una Bailey una.bailey@sfgov.org

CONTACT INFORMATION**Captain Una Bailey****Park Police Station****Commanding Officer****1899 Waller Street****Park Police District****San Francisco, CA 94117****415-242-3030****415-242-3000**Emergency Crimes in progress: **911**Number to use if calling 911 from a cell phone: **415-553-8090**SFPD Non Emergency line: **415-553-0123**Park Station Tip line: **415-731-2865**Operation Outreach Homeless Issues: **415-309-0806**Park District Permits: Officer Wu: **415-242-3033**

SFPD Website www.sfgov.org/police (Includes on-line reporting of Theft, Lost Property, Vandalism, Vehicle Burglary or Tampering, Harassing Phone Calls. The SFPD website also provides crime maps.)

SAFE - 415-553-1984, call to learn more about SAFE, schedule a home assessment or start a neighborhood watch.

311: Call **3-1-1** / TTY: **415-701-2323**.

For any questions or concerns, please contact us at Park Station's email:

sfpdparkstation@sfgov.org